



# THE BALANCE OF PAYMENTS

## STATISTICAL UPDATE

October 2005

**External Sector Statistics Unit**  
Economic Information & Publications Department  
RESEARCH AND ECONOMIC PROGRAMMING DIVISION

BANK OF JAMAICA  
P.O. Box 621  
Kingston, Jamaica

## TABLE OF CONTENTS

	<b>Pages</b>
External Trade .....	1
Exports.....	7
Garments.....	8
Bauxite.....	10
Selected Non -Traditionals.....	12
Tourism .....	13
Private Transfer flows.....	17
B. O. P. Reports.....	19

**EXTERNAL TRADE US\$000**

	OCT 2004	OCT 1/ 2005	CHANGE	%CHANGE	JAN-OCT 2004	JAN-OCT 1/ 2005	CHANGE	%CHANGE
<b>TOTAL GOODS EXPORTS(F.O.B)</b>	<b>120901</b>	<b>118731</b>	<b>-2170</b>	<b>-1.8</b>	<b>1324311</b>	<b>1348546</b>	<b>24235</b>	<b>1.8</b>
<b>TOTAL GOODS IMPORTS(C.I.F)</b>	<b>358146</b>	<b>363299</b>	<b>5153</b>	<b>1.4</b>	<b>3308099</b>	<b>3875527</b>	<b>567428</b>	<b>17.2</b>
<b>TRADE BALANCE</b>	<b>-237245</b>	<b>-244568</b>	<b>-7323</b>	<b>-3.1</b>	<b>-1983788</b>	<b>-2526981</b>	<b>-543193</b>	<b>-27.4</b>

**VALUE OF TOTAL GOODS EXPORTS US\$000**

	OCT 2004	OCT 1/ 2005	CHANGE	%CHANGE	JAN-OCT 2004	JAN-OCT 1/ 2005	CHANGE	%CHANGE
0.FOOD	11935	7962	-3973	-33.3	226532	175879	-50653	-22.4
1.BEVER. & TOBAC	4134	6293	2159	52.2	48275	68156	19881	41.2
2.CRUDE MATS	66774	67242	468	0.7	740942	829987	89045	12.0
3.MINERAL FUELS	1994	22464	20470	1026.6	27138	73589	46451	171.2
4.ANI.& VEG OILS	2	32	30	1500.0	48	85	37	77.1
5.CHEMICALS	16027	1920	-14107	-88.0	67766	52062	-15704	-23.2
6.MANUF. GOODS	998	970	-28	-2.8	12201	8508	-3693	-30.3
7.MACH.& TRANSP.	1771	1277	-494	-27.9	22344	15342	-7002	-31.3
8.MISC. MANUF	1862	1521	-341	-18.3	17730	17759	29	0.2
9.MISC. COMMDS.	0	0	0	-	0	0	0	-
<b>GENERAL MERCHANDISE EXPS.</b>	<b>105497</b>	<b>109681</b>	<b>4184</b>	<b>4.0</b>	<b>1162976</b>	<b>1241367</b>	<b>78391</b>	<b>6.7</b>
FREEZONE EXPORTS	9545	3191	-6354	-66.6	102741	48585	-54156	-52.7
GOODS PROCURED IN PORTS	5859	5859	0	0.0	58594	58594	0	0.0
<b>TOTAL GOODS EXPORTS</b>	<b>120901</b>	<b>118731</b>	<b>-2170</b>	<b>-1.8</b>	<b>1324311</b>	<b>1348546</b>	<b>24235</b>	<b>1.8</b>

**TRADITIONAL & NON-TRADITIONAL EXPORTS US\$000**

	OCT 2004	OCT 1/ 2005	CHANGE	%CHANGE	JAN-OCT 2004	JAN-OCT 1/ 2005	CHANGE	%CHANGE
<b>MAJOR TRAD. EXPORT</b>	<b>65049</b>	<b>65704</b>	<b>655</b>	<b>1.0</b>	<b>824531</b>	<b>894759</b>	<b>70228</b>	<b>8.5</b>
BAUXITE	857	7604	6747	787.3	72649	80733	8084	11.1
ALUMINA	64192	58006	-6186	-9.6	640929	733760	92831	14.5
SUGAR	0	0	0	-	98139	76805	-21334	-21.7
BANANAS	0	94	94	-	12814	3461	-9353	-73.0
<b>OTHER TRAD. EXPORT</b>	<b>6515</b>	<b>3885</b>	<b>-2630</b>	<b>-40.4</b>	<b>62987</b>	<b>54331</b>	<b>-8656</b>	<b>-13.7</b>
CITRUS	14	21	7	50.0	2014	1347	-667	-33.1
COCOA	118	71	-47	-39.8	1628	1207	-421	-25.9
COFFEE	4063	542	-3521	-86.7	33655	16862	-16793	-49.9
PIMENTO	402	452	50	12.4	1473	2564	1091	74.1
RUM	1771	2635	864	48.8	22818	30608	7790	34.1
GYPSUM	147	164	17	11.6	1399	1743	344	24.6
<b>NON-TRAD. EXPORTS</b>	<b>31102</b>	<b>37826</b>	<b>6724</b>	<b>21.6</b>	<b>240326</b>	<b>267835</b>	<b>27509</b>	<b>11.4</b>
RE-EXPORTS	2831	2266	-565	-20.0	35132	24442	-10690	-30.4
<b>GENERAL MERCHANDISE EXPS.</b>	<b>105497</b>	<b>109681</b>	<b>4184</b>	<b>4.0</b>	<b>1162976</b>	<b>1241367</b>	<b>78391</b>	<b>6.7</b>
FREEZONE EXPORTS	9545	3191	-6354	-66.6	102741	48585	-54156	-52.7
GOODS PROCURED IN PORTS	5859	5859	0	0.0	58594	58594	0	0.0
<b>TOTAL GOODS EXPORTS</b>	<b>120901</b>	<b>118731</b>	<b>-2170</b>	<b>-1.8</b>	<b>1324311</b>	<b>1348546</b>	<b>24235</b>	<b>1.8</b>

**VALUE OF GOODS IMPORTS BY S.I.T.C. US\$000**

	<b>OCT 2004</b>	<b>OCT 1/ 2005</b>	<b>CHANGE</b>	<b>%CHANGE</b>	<b>JAN-OCT 2004</b>	<b>JAN-OCT 1/ 2005</b>	<b>CHANGE</b>	<b>%CHANGE</b>
0.FOOD	47140	47188	48	0.1	427133	483382	56249	13.2
1.BEV. & TOBAC	4743	4471	-272	-5.7	36512	45531	9019	24.7
2.CRUDE MATS.	5950	3393	-2557	-43.0	53613	65090	11477	21.4
3.MIN.FUEL	92771	98844	6073	6.5	767525	1056760	289235	37.7
4.ANI & VEG OIL	922	4000	3078	333.8	24979	22641	-2338	-9.4
5.CHEMICAL	31134	39990	8856	28.4	329064	424960	95896	29.1
6.MANUF. GOOD	51187	47551	-3636	-7.1	438483	536768	98285	22.4
7.MACH.& TRANSP	74412	67338	-7074	-9.5	692358	700248	7890	1.1
8.MISC.MAN.GOOD	32387	34912	2525	7.8	329200	378478	49278	15.0
9.MISC. COMMDS.	4517	5466	949	21.0	53759	54743	984	1.8
<b>GENERAL MERCHANDISE IMPORTS</b>	<b>345163</b>	<b>353153</b>	<b>7990</b>	<b>2.3</b>	<b>3152626</b>	<b>3768601</b>	<b>615975</b>	<b>19.5</b>
FREEZONE IMPORTS	3625	788	-2837	-78.3	61893	13346	-48547	-78.4
GOODS PROCURED IN PORTS	9358	9358	0	0.0	93580	93580	0	0.0
<b>TOTAL GOODS IMPORTS</b>	<b>358146</b>	<b>363299</b>	<b>5153</b>	<b>1.4</b>	<b>3308099</b>	<b>3875527</b>	<b>567428</b>	<b>17.2</b>

1/PROVISIONAL

**MAJOR TRADITIONALS (VOLUME, VALUE, PRICE)**

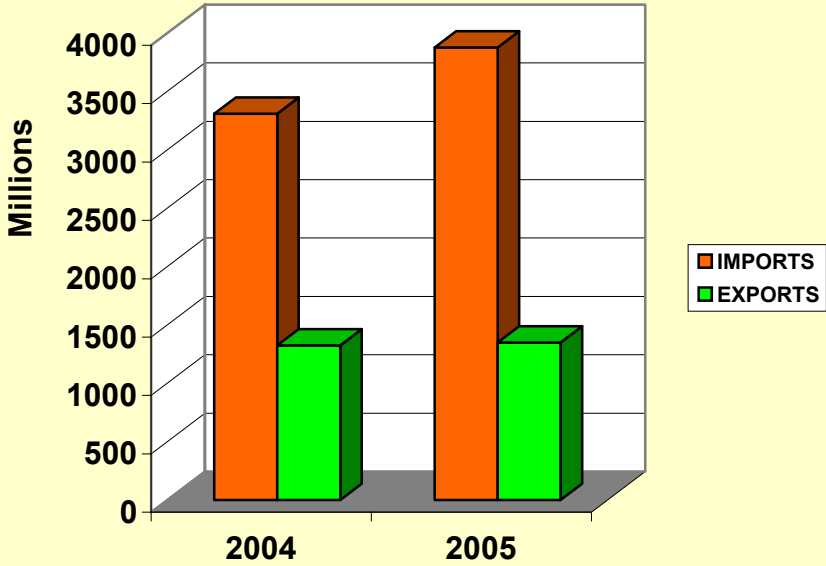
	<b>OCT 2004</b>	<b>OCT 1/ 2005</b>	<b>CHANGE</b>	<b>%CHANGE</b>	<b>JAN-OCT 2004</b>	<b>JAN-OCT 1/ 2005</b>	<b>CHANGE</b>	<b>%CHANGE</b>
<b>BAUXITE</b>								
Volume ('000 tonnes)	36.0	312.4	276.4	767.9	3012.9	3316.9	304.0	10.1
<b>Value (U.S. \$000)</b>	<b>857.0</b>	<b>7604.0</b>	<b>6747.0</b>	<b>787.3</b>	<b>72649.0</b>	<b>80733.0</b>	<b>8084.0</b>	<b>11.1</b>
Price (US \$/tonne)	23.8	24.3	0.4	1.8	24.1	24.3	0.2	0.9
<b>ALUMINA</b>								
Volume ('000 tonnes)	308.9	273.0	-35.9	-11.6	3185.4	3384.3	198.9	6.2
<b>Value (U.S. \$000)</b>	<b>64192.0</b>	<b>58006.0</b>	<b>-6186.0</b>	<b>-9.6</b>	<b>640929.0</b>	<b>733760.4</b>	<b>92831.4</b>	<b>14.5</b>
Price (US \$/tonne)	207.8	212.5	4.8	2.3	201.2	216.8	15.6	7.8
<b>SUGAR</b>								
Volume ('000 tonnes)	0.0	0.0	0.0	-	157.2	112.9	-44.4	-28.2
<b>Value (U.S. \$000)</b>	<b>0.0</b>	<b>0.0</b>	<b>0.0</b>	<b>-</b>	<b>98139.0</b>	<b>76805.0</b>	<b>-21334.0</b>	<b>-21.7</b>
Price (US \$/tonne)	0.0	0.0	0.0	-	624.2	680.5	56.3	9.0
<b>BANANAS</b>								
Volume ('000 tonnes)	0.0	0.5	0.5	-	27.6	8.8	-18.8	-68.2
<b>Value (U.S. \$000)</b>	<b>0.0</b>	<b>94.0</b>	<b>94.0</b>	<b>-</b>	<b>12814.0</b>	<b>3461.0</b>	<b>-9353.0</b>	<b>-73.0</b>
Price (US \$/tonne)	0.0	175.7	175.7	-	463.6	393.3	-70.3	-15.2

1/PROVISIONAL

External Sector Statistics Unit.

2006 January

**VALUE OF IMPORTS & EXPORT US\$Mn**  
JAN - OCTOBER



EXTERNAL TRADE US\$000								
	OCT	OCT 1/	CHANGE	%CHANGE	APR-OCT	APR-OCT 1/	CHANGE	%CHANGE
	2004/2005	2005/2006			2004/2005	2005/2006		
TOTAL GOODS EXPORTS(F.O.B)	120901	118731	-2170	-1.8	908343	971569	63226	7.0
TOTAL GOODS IMPORTS(C.I.F)	358146	363299	5153	1.4	2339192	2763075	423883	18.1
TRADE BALANCE	-237245	-244568	-7323	-3.1	-1430849	-1791506	-360657	-25.2
VALUE OF TOTAL GOODS EXPORTS US\$000								
	OCT	OCT 1/	CHANGE	%CHANGE	APR-OCT	APR-OCT 1/	CHANGE	%CHANGE
	2004/2005	2005/2006			2004/2005	2005/2006		
O.FOOD	11935	7962	-3973	-33.3	144456	116880	-27576	-19.1
1.BEVER. & TOBAC	4134	6293	2159	52.2	35156	49975	14819	42.2
2.CRUDE MATS	66774	67242	468	0.7	509045	592878	83833	16.5
3.MINERAL FUELS	1994	22464	20470	1026.6	20456	68437	47981	234.6
4.ANI.& VEG OILS	2	32	30	1500.0	36	60	24	66.7
5.CHEMICALS	16027	1920	-14107	-88.0	46315	34257	-12058	-26.0
6.MANUF. GOODS	998	970	-28	-2.8	6081	6021	-60	-1.0
7.MACH.& TRANSP.	1771	1277	-494	-27.9	13176	10869	-2307	-17.5
8.MISC. MANUF	1862	1521	-341	-18.3	12304	13340	1036	8.4
9.MISC. COMMDS.	0	0	0	-	0	0	0	-
<b>GENERAL MERCHANDISE EXPS.</b>	<b>105497</b>	<b>109681</b>	<b>4184</b>	<b>4.0</b>	<b>787025</b>	<b>892717</b>	<b>105692</b>	<b>13.4</b>
FREEZONE EXPORTS	9545	3191	-6354	-66.6	80302	37836	-42466	-52.9
GOODS PROCURED IN PORTS	5859	5859	0	0.0	41016	41016	0	0.0
<b>TOTAL GOODS EXPORTS</b>	<b>120901</b>	<b>118731</b>	<b>-2170</b>	<b>-1.8</b>	<b>908343</b>	<b>971569</b>	<b>63226</b>	<b>7.0</b>
TRADITIONAL & NON-TRADITIONAL EXPORTS US\$000								
	OCT	OCT 1/	CHANGE	%CHANGE	APR-OCT	APR-OCT 1/	CHANGE	%CHANGE
	2004/2005	2005/2006			2004/2005	2005/2006		
<b>MAJOR TRAD. EXPORT</b>	<b>65049</b>	<b>65704</b>	<b>655</b>	<b>1.0</b>	<b>553099</b>	<b>629802</b>	<b>76703</b>	<b>13.9</b>
BAUXITE	857	7604	6747	787.3	48527	54977	6450	13.3
ALUMINA	64192	58006	-6186	-9.6	440807	525989	85182	19.3
SUGAR	0	0	0	-	55593	45375	-10218	-18.4
BANANAS	0	94	94	-	8172	3461	-4711	-57.6
<b>OTHER TRAD. EXPORT</b>	<b>6515</b>	<b>3885</b>	<b>-2630</b>	<b>-40.4</b>	<b>45954</b>	<b>39221</b>	<b>-6733</b>	<b>-14.7</b>
CITRUS	14	21	7	50.0	755	368	-387	-51.3
COCOA	118	71	-47	-39.8	1321	776	-545	-41.3
COFFEE	4063	542	-3521	-86.7	25863	12408	-13455	-52.0
PIMENTO	402	452	50	12.4	903	2191	1288	142.6
RUM	1771	2635	864	48.8	16138	22283	6145	38.1
GYPSUM	147	164	17	11.6	974	1195	221	22.7
<b>NON-TRAD. EXPORTS</b>	<b>31102</b>	<b>37826</b>	<b>6724</b>	<b>21.6</b>	<b>168239</b>	<b>206513</b>	<b>38274</b>	<b>22.7</b>
RE-EXPORTS	2831	2266	-565	-20.0	19733	17181	-2552	-12.9
<b>GENERAL MERCHANDISE EXPS.</b>	<b>105497</b>	<b>109681</b>	<b>4184</b>	<b>4.0</b>	<b>787025</b>	<b>892717</b>	<b>105692</b>	<b>13.4</b>
FREEZONE EXPORTS	9545	3191	-6354	-66.6	80302	37836	-42466	-52.9
GOODS PROCURED IN PORTS	5859	5859	0	0.0	41016	41016	0	0.0
<b>TOTAL GOODS EXPORTS</b>	<b>120901</b>	<b>118731</b>	<b>-2170</b>	<b>-1.8</b>	<b>908343</b>	<b>971569</b>	<b>63226</b>	<b>7.0</b>

VALUE OF GOODS IMPORTS BY S.I.T.C. US\$000

	OCT 2004/2005	OCT 1/ 2005/2006	CHANGE	%CHANGE	APR-OCT 2004/2005	APR-OCT 1/ 2005/2006	CHANGE	%CHANGE
0.FOOD	47140	47188	48	0.1	293903	343613	49710	16.9
1.BEV. & TOBAC	4743	4471	-272	-5.7	25598	32802	7204	28.1
2.CRUDE MATS.	5950	3393	-2557	-43.0	39155	44266	5111	13.1
3.MIN.FUEL	92771	98844	6073	6.5	543029	771864	228835	42.1
4.ANI & VEG OIL	922	4000	3078	333.8	17711	14584	-3127	-17.7
5.CHEMICAL	31134	39990	8856	28.4	218173	296557	78384	35.9
6.MANUF. GOOD	51187	47551	-3636	-7.1	326917	377059	50142	15.3
7.MACH.& TRANSP	74412	67338	-7074	-9.5	489111	496233	7122	1.5
8.MISC.MAN.GOOD	32387	34912	2525	7.8	229546	271753	42207	18.4
9.MISC. COMMDS.	4517	5466	949	21.0	38990	40194	1204	3.1
<b>GENERAL MERCHANDISE IMPORTS</b>	<b>345163</b>	<b>353153</b>	<b>7990</b>	<b>2.3</b>	<b>2222133</b>	<b>2688925</b>	<b>466792</b>	<b>21.0</b>
FREEZONE IMPORTS	3625	788	-2837	-78.3	51553	8644	-42909	-83.2
GOODS PROCURED IN PORTS	9358	9358	0	0.0	65506	65506	0	0.0
<b>TOTAL GOODS IMPORTS</b>	<b>358146</b>	<b>363299</b>	<b>5153</b>	<b>1.4</b>	<b>2339192</b>	<b>2763075</b>	<b>423883</b>	<b>18.1</b>

1/PROVISIONAL

**MAJOR TRADITIONALS (VOLUME, VALUE, PRICE)**

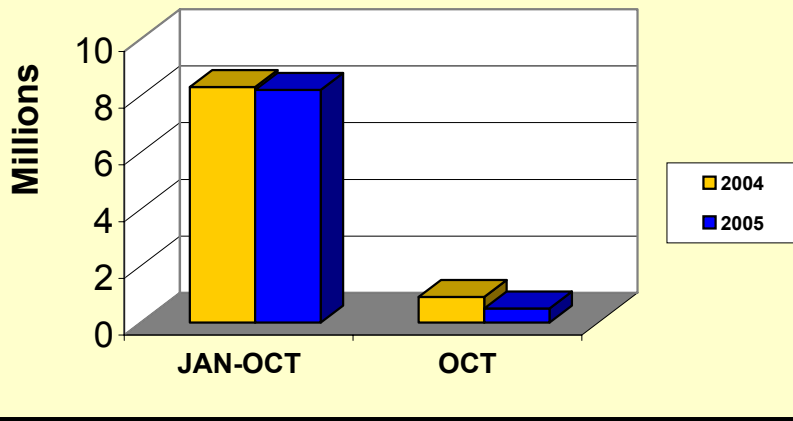
	OCT 2004/2005	OCT 1/ 2005/2006	CHANGE	%CHANGE	APR-OCT 2004/2005	APR-OCT 1/ 2005/2006	CHANGE	%CHANGE
<b>BAUXITE</b>								
Volume ('000 tonnes)	36.0	312.4	276.4	767.9	2025.9	2258.7	232.8	11.5
<b>Value (U.S. \$000)</b>	<b>857.0</b>	<b>7604.0</b>	<b>6747.0</b>	<b>787.3</b>	<b>48527.0</b>	<b>54977.0</b>	<b>6450.0</b>	<b>13.3</b>
Price (US \$/tonne)	23.8	24.3	0.4	1.8	24.0	24.3	0.3	1.2
<b>ALUMINA</b>								
Volume ('000 tonnes)	308.9	273.0	-35.9	-11.6	2168.7	2426.6	257.8	11.9
<b>Value (U.S. \$000)</b>	<b>64192.0</b>	<b>58006.0</b>	<b>-6186.0</b>	<b>-9.6</b>	<b>440807.0</b>	<b>525989.0</b>	<b>85182.0</b>	<b>19.3</b>
Price (US \$/tonne)	207.8	212.5	4.8	2.3	203.3	216.8	13.4	6.6
<b>SUGAR</b>								
Volume ('000 tonnes)	0.0	0.0	0.0	-	90.6	68.0	-22.6	-24.9
<b>Value (U.S. \$000)</b>	<b>0.0</b>	<b>0.0</b>	<b>0.0</b>	<b>-</b>	<b>55593.0</b>	<b>45375.0</b>	<b>-10218.0</b>	<b>-18.4</b>
Price (US \$/tonne)	0.0	-	-	-	613.5	667.2	53.6	8.7
<b>BANANAS</b>								
Volume ('000 tonnes)	0.0	0.5	0.5	-	18.1	8.8	-9.3	-51.5
<b>Value (U.S. \$000)</b>	<b>0.0</b>	<b>94.0</b>	<b>94.0</b>	<b>-</b>	<b>8172.0</b>	<b>3461.0</b>	<b>-4711.0</b>	<b>-57.6</b>
Price (US \$/tonne)	0.0	175.7	175.7	-	450.8	393.3	-57.4	-12.7

1/PROVISIONAL

External Sector Statistics Unit.  
2006 January

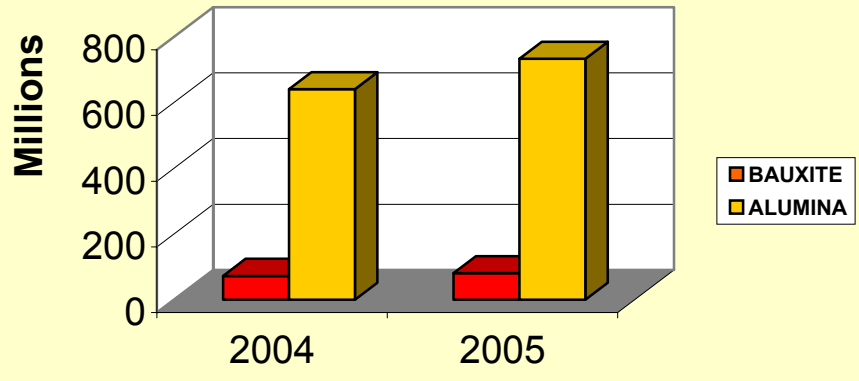
	GARMENTS EXPORTS US\$m.			
	2004	2005	CHANGE	%CHANGE
JANUARY	0.7	0.8	0.1	14.3
FEBRUARY	0.9	0.8	-0.1	-11.1
MARCH	0.7	0.9	0.2	28.6
<b>JAN-MARCH</b>	<b>2.3</b>	<b>2.5</b>	<b>0.2</b>	<b>8.7</b>
APRIL	1.2	0.9	-0.3	-25.0
MAY	0.9	0.8	-0.1	-11.1
JUNE	0.8	0.9	0.1	12.5
<b>JAN-JUNE</b>	<b>5.2</b>	<b>5.1</b>	<b>-0.1</b>	<b>-1.9</b>
JULY	0.8	0.9	0.1	12.5
AUGUST	0.8	0.8	0.0	0.0
SEPTEMBER	0.6	0.9	0.3	50.0
<b>JAN-SEPTEMBER</b>	<b>7.4</b>	<b>7.7</b>	<b>0.3</b>	<b>4.1</b>
OCTOBER	0.9	0.5	-0.4	-44.4
<b>JAN-OCTOBER</b>	<b>8.3</b>	<b>8.2</b>	<b>-0.1</b>	<b>-1.2</b>
	2004/2005	2005/2006	CHANGE	%CHANGE
APRIL	1.2	0.9	-0.3	-25.0
MAY	0.9	0.8	-0.1	-11.1
JUNE	0.8	0.9	0.1	12.5
<b>APRIL-JUNE</b>	<b>2.9</b>	<b>2.6</b>	<b>-0.3</b>	<b>-10.3</b>
JULY	0.8	0.9	0.1	12.5
AUGUST	0.8	0.8	0.0	0.0
SEPTEMBER	0.6	0.9	0.3	50.0
<b>APRIL-SEPTEMBER</b>	<b>5.1</b>	<b>5.2</b>	<b>0.1</b>	<b>2.0</b>
OCTOBER	0.9	0.5	-0.4	-44.4
<b>APRIL-OCTOBER</b>	<b>6.0</b>	<b>5.7</b>	<b>-0.3</b>	<b>-5.0</b>
SOURCE: STATISTICAL INSTITUTE OF JAMAICA EXTERNAL SECTOR STATISTICS 2006 January				

**GARMENTS EXPORT US\$Mn  
JAN - OCTOBER**



BAUXITE						
	2004 Volumes (Tonnes)	2005 Volumes (Tonnes)	% Change	2004 Values (\$ 000')	2005 Values (\$ 000')	% Change
JANUARY	375063.0	393019.0	4.8	9167.0	9566.0	4.4
FEBRUARY	230889.0	313182.0	35.6	5643.0	7623.0	35.1
MARCH	380995.0	351972.0	-7.6	9312.0	8567.0	-8.0
<b>JAN-MARCH</b>	<b>986947.0</b>	<b>1058173.0</b>	<b>7.2</b>	<b>24122.0</b>	<b>25756.0</b>	<b>6.8</b>
APRIL	425749.0	277541.0	-34.8	10124.0	6755.0	-33.3
MAY	337950.0	271106.0	-19.8	8037.0	6599.0	-17.9
JUNE	304406.0	380780.0	25.1	7239.0	9268.0	28.0
<b>JAN-JUNE</b>	<b>2055052.0</b>	<b>1987600.0</b>	<b>-3.3</b>	<b>49522.0</b>	<b>48378.0</b>	<b>-2.3</b>
JULY	303894.0	259555.0	-14.6	7342.0	6318.0	-13.9
AUGUST	314337.0	404689.0	28.7	7594.0	9850.0	29.7
SEPTEMBER	303576.0	352629.0	16.2	7334.0	8583.0	17.0
<b>JAN-SEPTEMBER</b>	<b>2976859.0</b>	<b>3004473.0</b>	<b>0.9</b>	<b>71792.0</b>	<b>73129.0</b>	<b>1.9</b>
OCTOBER	35996.0	312417.0	767.9	857.0	7604.0	787.3
<b>JAN-OCTOBER</b>	<b>3012855.0</b>	<b>3316890.0</b>	<b>10.1</b>	<b>72649.0</b>	<b>80733.0</b>	<b>11.1</b>
ALUMINA						
	2004 Volumes (Tonnes)	2005 Volumes (Tonnes)	% Change	2004 Values (\$ 000')	2005 Values (\$ 000')	% Change
JANUARY	353037.0	358434.0	1.5	69492.0	77762.0	11.9
FEBRUARY	340880.0	273943.0	-19.6	67099.0	59432.0	-11.4
MARCH	322755.0	325312.0	0.8	63531.0	70577.0	11.1
<b>JAN-MARCH</b>	<b>1016672.0</b>	<b>957689.0</b>	<b>-5.8</b>	<b>200122.0</b>	<b>207771.0</b>	<b>3.8</b>
APRIL	419226.0	444743.0	6.1	84457.0	97612.0	15.6
MAY	297349.0	332315.0	11.8	59904.0	72937.0	21.8
JUNE	290186.0	317963.0	9.6	58461.0	69787.0	19.4
<b>JAN-JUNE</b>	<b>2023433.0</b>	<b>2052710.0</b>	<b>1.4</b>	<b>402944.0</b>	<b>448107.0</b>	<b>11.2</b>
JULY	371501.0	370108.0	-0.4	75686.0	79595.0	5.2
AUGUST	327109.0	342197.0	4.6	66642.0	73593.0	10.4
SEPTEMBER	154446.0	346223.0	124.2	31465.0	74459.0	136.6
<b>JAN - SEPTEMBER</b>	<b>2876489.0</b>	<b>3111238.0</b>	<b>8.2</b>	<b>576737.0</b>	<b>675754.0</b>	<b>17.2</b>
OCTOBER	308914.0	273021.0	-11.6	64192.0	58006.0	-9.6
<b>JAN - OCTOBER</b>	<b>3185403.0</b>	<b>3384259.0</b>	<b>6.2</b>	<b>640929.0</b>	<b>733760.0</b>	<b>14.5</b>

**BAUXITE/ALUMINA US\$Mn  
JAN - OCTOBER**



EXPORTS OF SELECTED NON-TRADITIONAL DOMESTIC COMMODITIES US\$ 000

	2004	2005	%	2004	2005	%	2004/2005	2005/2006	%
	JAN-OCT	JAN-OCT 1/		OCT	OCT 1/		APR-OCT	APR-OCT 1/	
<b>COMMODITIES</b>									
-----									
<b>FOOD</b>									
----									
ACKEE	5865.0	7382.0	25.9	330.0	1021.0	209.4	3859.0	4668.0	21.0
FISH	6158.0	8423.0	36.8	416.0	725.0	74.3	4124.0	6994.0	69.6
BREADFRUIT	818.0	595.0	-27.3	30.0	35.0	16.7	658.0	445.0	-32.4
CUCUMBERS	11.0	9.0	-18.2	0.0	0.0	0.0	8.0	6.0	-25.0
PUMPKINS	315.0	240.0	-23.8	9.0	18.0	100.0	179.0	135.0	-24.6
OTHER VEGETABLES	223.0	217.0	-2.7	42.0	48.0	14.3	206.0	187.0	-9.2
DASHEEN	828.0	561.0	-32.2	65.0	64.0	-1.5	500.0	334.0	-33.2
CASSAVA	0.0	0.0	0.0	0.0	0.0	0.0	0.0	0.0	0.0
SWEET POTATOES	1197.0	1540.0	28.7	120.0	148.0	23.3	888.0	1047.0	17.9
YAMS	12935.0	12852.0	-0.6	1599.0	901.0	-43.7	9012.0	9489.0	5.3
AVOCADOES	274.0	213.0	-22.3	115.0	130.0	13.0	274.0	213.0	-22.3
MANGOES	851.0	921.0	8.2	0.0	0.0	0.0	709.0	773.0	9.0
OTHER ROOTS	356.0	415.0	16.6	33.0	40.0	21.2	243.0	293.0	20.6
PAPAYAS	1859.0	1733.0	-6.8	133.0	193.0		1246.0	1317.0	5.7
MELON	0.0	0.0	0.0	0.0	0.0	0.0	0.0	0.0	0.0
<b>Total</b>	<b>31690.0</b>	<b>35101.0</b>	<b>10.8</b>	<b>2892.0</b>	<b>3323.0</b>	<b>14.9</b>	<b>21906.0</b>	<b>25901.0</b>	<b>18.2</b>
<b>CRUDE MATERIALS</b>									
-----									
Cut Flowers	39.0	18.0	-53.8	0.0	0.0	0.0	23.0	9.0	-60.9
Live Plts.&Foliage	7.0	47.0	571.4	0.0	0.0	0.0	7.0	47.0	100.0
<b>Total</b>	<b>46.0</b>	<b>65.0</b>	<b>41.3</b>	<b>0.0</b>	<b>0.0</b>	<b>-</b>	<b>30.0</b>	<b>56.0</b>	<b>86.7</b>
<b>1/PROVISIONAL</b>									
2006 January									

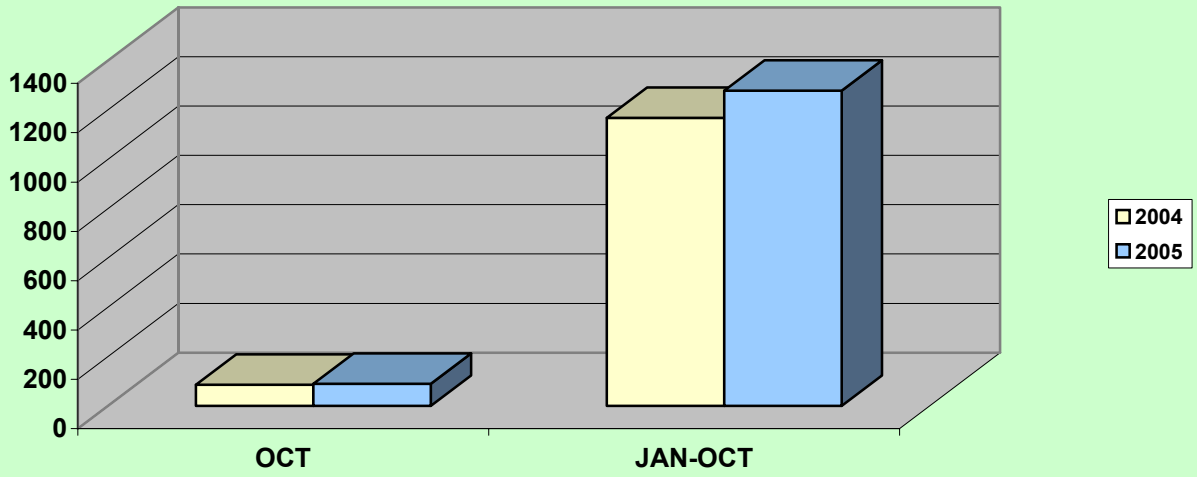
**TOURISM STATISTICS**

	<b>2004 OCT</b>	<b>2005 OCT 1/</b>	<b>% CHNG</b>	<b>2004 JAN-OCT</b>	<b>2005 JAN-OCT 1/</b>	<b>% CHNG</b>
<b>TOTAL STOP-OVERS</b>	<b>84802</b>	<b>87467</b>	<b>3.1</b>	<b>1181837</b>	<b>1191658</b>	<b>0.8</b>
<b>FOREIGN NAT. STOP-OVERS(# of)</b>	<b>79207</b>	<b>82063</b>	<b>3.6</b>	<b>1113733</b>	<b>1123595</b>	<b>0.9</b>
Long Stay	73041	78809	7.9	1050286	1086496	3.4
Short Stay	6166	3254	-47.2	63447	37099	-41.5
NON-RES. JAMAICANS	5595	5404	-3.4	68104	68063	-0.1
CRUISE PASSENGERS	61723	68463	10.9	867318	894740	3.2
<b>TOTAL TOURISTS</b>	<b>146525</b>	<b>155930</b>	<b>6.4</b>	<b>2049155</b>	<b>2086398</b>	<b>1.8</b>
ARMED FORCES	0	0	-	0	0	-
<b>TOTAL VISITORS</b>	<b>146525</b>	<b>155930</b>	<b>6.4</b>	<b>2049155</b>	<b>2086398</b>	<b>1.8</b>
AVG.LENGTH.OF STAY	9.9	9.8	-1.0	9.6	9.7	0.4
<b>ESTM.EXPD.(US\$MN)</b>	<b>85.0</b>	<b>89.6</b>	<b>5.4</b>	<b>1167.9</b>	<b>1278.9</b>	<b>9.5</b>
<b>Avg. Est.Exp/per person/per day (US\$)</b>						
Stop-Overs	98.0	100.7	2.8	97.4	107.8	10.7
A.forces/Cruise	88.9	88.0	-1.0	83.4	82.8	-0.7

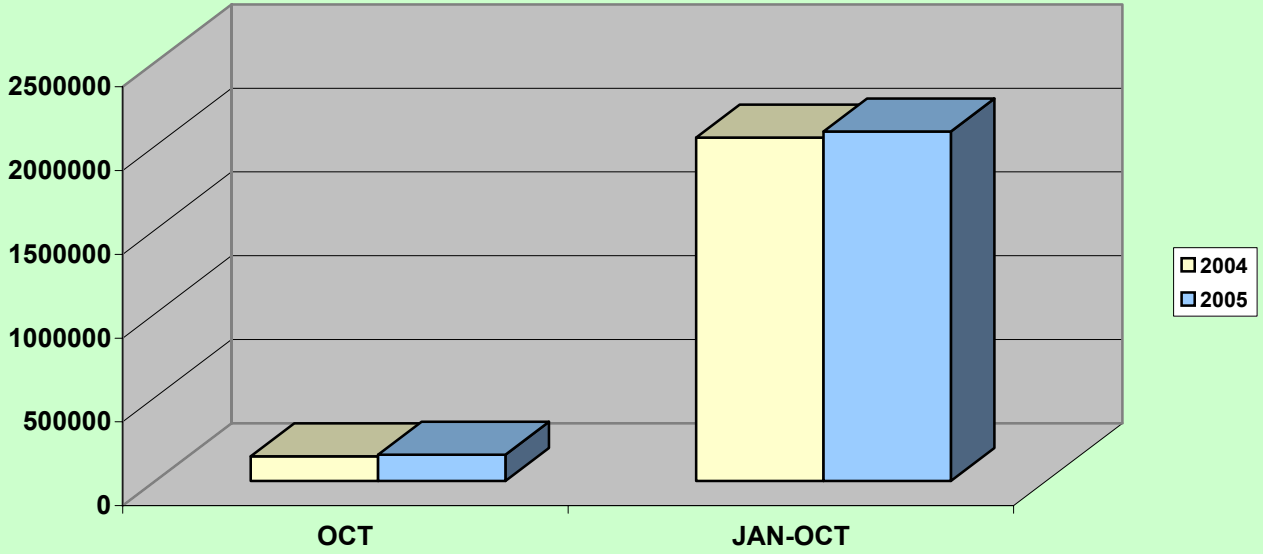
*1/ Provisional*

*External Sector Statistics Unit  
Economic Information & Publications Dept.  
2006 January*

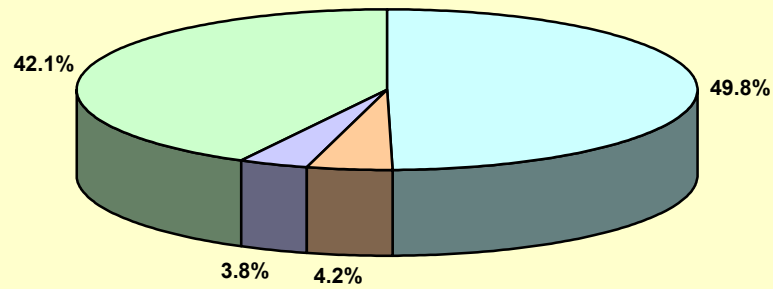
### Estimated Tourist Expenditure (US\$m)



### Jamaica: Total Visitors

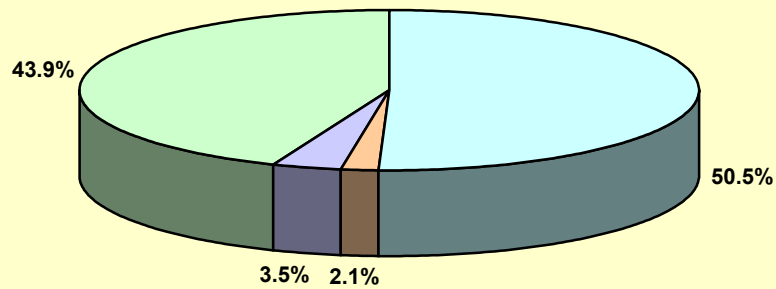


### Composition of Visitors October 2004



For. Nat. Long Stay For. Nat. Short Stay Non-Res. Jamaicans Cruise Passengers

### Composition of Visitors October 2005



For. Nat. Long Stay For. Nat. Short Stay Non-Res. Jamaicans Cruise Passengers

**TOURISM STATISTICS**

	<b>2004/2005</b>	<b>2005/2006</b>		<b>%</b>
	<b>APR-OCT</b>	<b>APR-OCT 1/</b>	<b>CHNG</b>	<b>CHNG</b>
<b>TOTAL STOP-OVERS</b>	<b>815752</b>	<b>796689</b>	<b>-19063</b>	<b>-2.3</b>
FOREIGN NAT. STOP-OVERS	763489	746554	-16935	-2.2
Long Stay	720338	722376	2038	0.3
Short Stay	43151	24178	-18973	-44.0
NON-RES. JAMAICANS	52263	50135	-2128	-4.1
CRUISE PASSENGERS	498051	519767	21716	4.4
<b>TOTAL TOURISTS</b>	<b>1313803</b>	<b>1316456</b>	<b>2653</b>	<b>0.2</b>
ARMED FORCES	0	0	0	-
<b>TOTAL VISITORS</b>	<b>1313803</b>	<b>1316456</b>	<b>2653</b>	<b>0.2</b>
AVG.LENGTH.OF STAY	9.9	10.0	0.1	1.3
<b>ESTM.EXPD.(US\$MN)</b>	<b>784.4</b>	<b>840.9</b>	<b>56.6</b>	<b>7.2</b>
<b>Avg. Est.Exp/per person/per day (US\$)</b>				
Stop-Overs	92.1	103.2	11.1	12.1
A.forces/Cruise	86.9	86.1	-0.8	-0.9

*1/Provisional*

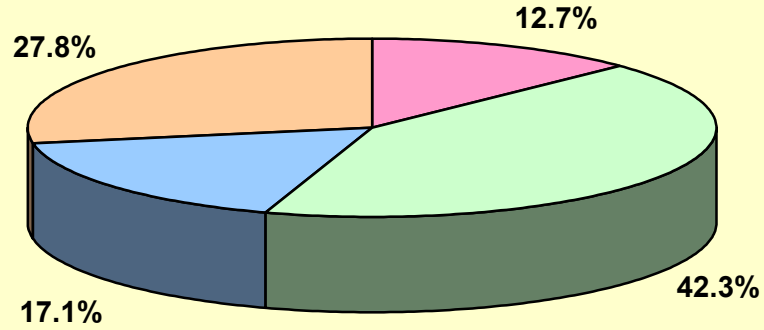
*External Sector Statistics Unit  
Economic Information & Publications Dept.*

<b>SOURCES OF PRIVATE TRANSFERS</b>								
<b>(US\$Mn)</b>								
	<b>2004</b>	<b>2005</b>			<b>2004</b>	<b>2005</b>		
	<b>OCT</b>	<b>OCT 1/</b>	<b>CHNG</b>	<b>%CHNG</b>	<b>JAN - OCT</b>	<b>JAN-OCT 1/</b>	<b>CHNG</b>	<b>%CHNG</b>
<b>TOTAL INFLOWS</b>	<b>161.04</b>	<b>147.36</b>	<b>-13.68</b>	<b>-8.49</b>	<b>1352.42</b>	<b>1573.08</b>	<b>220.66</b>	<b>16.32</b>
COMMERCIAL BANKS	20.52	38.63	18.11	88.22	284.35	386.36	102.00	35.87
REMITTANCE COMPS.	68.17	70.00	1.83	2.68	615.06	714.08	99.02	16.10
POST OFFICE	0.10	0.10	0.00	0.00	1.01	1.04	0.02	2.48
BUILDING SOCIETIES	27.55	22.96	-4.60	-16.69	278.55	254.53	-24.02	-8.62
OTHER	44.69	15.68	-29.01	-64.92	173.44	217.08	43.63	25.16

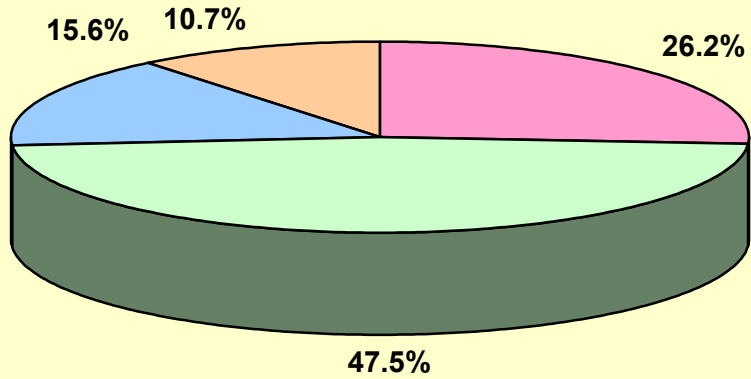
<b>SOURCES OF PRIVATE TRANSFERS</b>				
<b>(US\$Mn)</b>				
	<b>2004/2005</b>	<b>2005/2006</b>		
	<b>APR - OCT</b>	<b>APR-OCT 1/</b>	<b>CHNG</b>	<b>%CHNG</b>
<b>TOTAL INFLOWS</b>	<b>957.43</b>	<b>1066.73</b>	<b>109.31</b>	<b>11.42</b>
COMMERCIAL BANKS	187.71	262.55	74.84	39.87
REMITTANCE COMPS.	440.13	512.93	72.81	16.54
POST OFFICE	0.71	0.72	0.01	1.41
BUILDING SOCIETIES	195.64	180.76	-14.87	-7.60
OTHER	133.24	109.76	-23.48	-17.62

**Sources of Private Transfers (US\$mn)  
October 2004**



Commercial Banks Remittance Companies Building Societies Other

**Sources of Private Transfers (US\$mn)  
October 2005**



Commercial Banks Remittance Companies Building Societies Other

**Balance of Payments of Jamaica**

US\$Mn.

	Jan-Oct 2004	Jan-Oct 1/ 2005	Change
<b>1. Current Account</b>	<b>-389.6</b>	<b>-686.8</b>	<b>-297.2</b>
<b>A. Goods Balance</b>	<b>-1536.5</b>	<b>-2029.7</b>	<b>-493.2</b>
Exports	1324.2	1348.4	24.2
Imports	2860.7	3378.1	517.4
<b>B. Services Balance</b>	<b>468.2</b>	<b>564.0</b>	<b>95.8</b>
Transportation	-113.7	-174.4	-60.7
Travel	934.0	1078.1	144.1
Other Services	-352.1	-339.7	12.4
<b>C. Income</b>	<b>-452.4</b>	<b>-489.8</b>	<b>-37.4</b>
Compensation of employees	63.3	64.9	1.6
Investment Income	-515.7	-554.7	-39.0
<b>D. Current Transfers</b>	<b>1131.1</b>	<b>1268.7</b>	<b>137.6</b>
Official	116.3	103.0	-13.3
Private	1014.8	1165.7	150.9
<b>2. Capital &amp; Financial Account</b>	<b>389.6</b>	<b>686.8</b>	<b>297.2</b>
<b>A. Capital Account</b>	<b>0.8</b>	<b>-9.9</b>	<b>-10.7</b>
Capital Transfers	0.8	-9.9	-10.7
Official	11.4	0.3	-11.1
Private	-10.6	-10.2	0.4
Acq/dis. of non-produced non-fin. assets	0.0	0.0	0.0
<b>B. Financial Account</b>	<b>388.8</b>	<b>696.7</b>	<b>307.9</b>
Other Official Investment (incl. Govt. Reserves)	533.8	201.4	-332.4
Other Private Investment (incl. Errors & omissions)	516.7	715.8	199.1
Reserves	-661.7	-220.5	

*1/Provisional*

*External Sector Statistics Unit*

*Economic Information & Publications Dept.*

*2006 January*

<b>Balance of Payments of Jamaica</b>			
<b>US\$Mn.</b>			
	<b>Jan-Oct 2004</b>	<b>Jan-Oct 1/ 2005</b>	<b>Change</b>
<b>Services (Net)</b>	<b>468.2</b>	<b>564.0</b>	<b>95.8</b>
Inflows	1876.0	1979.9	103.9
Outflows	1407.8	1415.9	8.1
<b>Transportation</b>	<b>-113.7</b>	<b>-174.4</b>	<b>-60.7</b>
Inflows	405.3	396.9	-8.4
Outflows	519.0	571.3	52.3
<b>Travel</b>	<b>934.0</b>	<b>1078.1</b>	<b>144.1</b>
Inflows	1167.9	1279.0	111.1
Outflows	233.9	200.9	-33.0
<b>Other Services</b>	<b>-352.1</b>	<b>-339.7</b>	<b>12.4</b>
Inflows	302.8	304.0	1.2
Outflows	654.9	643.7	-11.2
<b>Income (Net)</b>	<b>-452.4</b>	<b>-489.8</b>	<b>-37.4</b>
<b>Compensation of Employees</b>	<b>63.3</b>	<b>64.9</b>	<b>1.6</b>
Inflows	104.7	113.9	9.2
Outflows	41.4	49.0	7.6
<b>Investment Income</b>	<b>-515.7</b>	<b>-554.7</b>	<b>-39.0</b>
Inflows	108.6	130.5	21.9
Outflows	624.3	685.2	60.9
- Bank of Jamaica	0.4	0.7	0.3
- Government Direct	219.7	277.8	58.1
- Government Guaranteed	1.2	1.7	0.5
- Private	0.0	0.0	0.0
- Direct Investment	288.0	290.2	2.2
- Other	114.9	114.9	0.0
<b>Current Transfers (Net)</b>	<b>1131.1</b>	<b>1268.7</b>	<b>137.6</b>
Inflows	1471.7	1679.1	207.4
Outflows	340.6	410.4	69.8
<b>Official</b>	<b>116.3</b>	<b>103.0</b>	<b>-13.3</b>
Inflows	119.3	106.0	-13.3
Outflows	3.0	3.0	0.0
<b>Private</b>	<b>1014.8</b>	<b>1165.7</b>	<b>150.9</b>
Inflows	1352.4	1573.1	220.7
Outflows	337.6	407.4	69.8

	<b>Balance of Payments of Jamaica</b>		
	<b>US\$Mn.</b>		
	<b>Jan-Oct 2004</b>	<b>Jan-Oct 1/ 2005</b>	<b>Change</b>
<b>Capital &amp; Financial Account (Net)</b>	<b>389.6</b>	<b>686.8</b>	<b>297.2</b>
<b>Capital Account (Net)</b>	<b>0.8</b>	<b>-9.9</b>	<b>-10.7</b>
<b>1. Capital Transfers</b>	<b>0.8</b>	<b>-9.9</b>	<b>-10.7</b>
<b>Official</b>	<b>11.4</b>	<b>0.3</b>	<b>-11.1</b>
Inflows	11.4	0.3	-11.1
Outflows	0.0	0.0	0.0
<b>Private</b>	<b>-10.6</b>	<b>-10.2</b>	<b>0.4</b>
Inflows	17.4	17.8	0.4
Outflows	28.0	28.0	0.0
<b>2. Acq/disp. of non-produced non-fin. assets</b>	<b>0.0</b>	<b>0.0</b>	<b>0.0</b>
Inflows	0.0	0.0	0.0
Outflows	0.0	0.0	0.0
<b>Financial Account (Net)</b>	<b>388.8</b>	<b>696.7</b>	<b>307.9</b>
<b>Other Official Investments (incl. Govt. Reserves)</b>	<b>533.8</b>	<b>201.4</b>	<b>-332.4</b>
Inflows	954.1	1068.3	114.2
Outflows	420.3	866.9	446.6
<b>Other Private Investments (incl. errors &amp; omissions)</b>	<b>516.7</b>	<b>715.8</b>	<b>199.1</b>
Inflows	2384.0	2830.7	446.7
Outflows	1867.3	2114.9	247.6
<b>Reserves</b>	<b>-661.7</b>	<b>-220.5</b>	

	Balance of Payments of Jamaica US\$Mn.			Balance of Payments of Jamaica US\$Mn.		
	Oct 2004	Oct 1/ 2005	Change	Apr-Oct 2004/05	Apr-Oct 1/ 2005/06	Change
<b>1. Current Account</b>	<b>-71.4</b>	<b>-91.2</b>	<b>-19.8</b>	<b>-355.2</b>	<b>-596.3</b>	<b>-241.1</b>
<b>A. Goods Balance</b>	-189.5	-198.0	-8.5	-1114.6	-1438.9	-324.3
Exports	120.9	118.7	-2.2	908.2	971.5	63.3
Imports	310.4	316.7	6.3	2022.8	2410.4	387.6
<b>B. Services Balance</b>	<b>5.2</b>	<b>14.9</b>	<b>9.7</b>	<b>266.0</b>	<b>309.4</b>	<b>43.4</b>
Transportation	-21.9	-21.7	0.2	-99.6	-145.6	-46.0
Travel	58.9	66.5	7.6	608.8	690.7	81.9
Other Services	-31.8	-29.9	1.9	-243.2	-235.7	7.5
<b>C. Income</b>	<b>-19.6</b>	<b>-30.3</b>	<b>-10.7</b>	<b>-304.1</b>	<b>-340.6</b>	<b>-36.5</b>
Compensation of employees	15.4	14.8	-0.6	58.5	58.2	-0.3
Investment Income	-35.0	-45.1	-10.1	-362.6	-398.8	-36.2
<b>D. Current Transfers</b>	<b>132.5</b>	<b>122.2</b>	<b>-10.3</b>	<b>797.5</b>	<b>873.8</b>	<b>76.3</b>
Official	21.0	8.0	-13.0	88.8	63.8	-25.0
Private	111.5	114.2	2.7	708.7	810.0	101.3
<b>2. Capital &amp; Financial Account</b>	<b>71.4</b>	<b>91.2</b>	<b>19.8</b>	<b>355.2</b>	<b>596.3</b>	<b>241.1</b>
<b>A. Capital Account</b>	<b>0.2</b>	<b>-1.0</b>	<b>-1.2</b>	<b>1.2</b>	<b>-6.9</b>	<b>-8.1</b>
Capital Transfers	0.2	-1.0	-1.2	1.2	-6.9	-8.1
Official	1.1	0.0	-1.1	8.0	0.2	-7.8
Private	-0.9	-1.0	-0.1	-6.8	-7.1	-0.3
Acq/disp. of non-produced non-fin. assets	0.0	0.0	0.0	0.0	0.0	0.0
<b>B. Financial Account</b>	<b>71.2</b>	<b>92.2</b>	<b>21.0</b>	<b>354.0</b>	<b>603.2</b>	<b>249.2</b>
Other Official Investment (incl. Govt. Reserves)	173.5	104.6	-68.9	280.3	249.9	-30.4
Other Private Investment (incl. Errors & omissions)	107.8	-52.4	-160.2	331.7	530.7	199.0
Reserves	-210.1	40.0	250.1	-258.0	-177.4	

1/Provisional

External Sector Statistics Unit  
Economic Information & Publications Dept.  
2006 January

	Balance of Payments of Jamaica US\$Mn.			Balance of Payments of Jamaica US\$Mn.		
	Oct 2004	Oct 1/ 2005	Change	Apr-Oct 2004/05	Apr-Oct 1/ 2005/06	Change
<b>Services (Net)</b>	<b>5.2</b>	<b>14.9</b>	<b>9.7</b>	<b>266.0</b>	<b>309.4</b>	<b>43.4</b>
Inflows	143.8	149.4	5.6	1252.4	1300.9	48.5
Outflows	138.6	134.5	-4.1	986.4	991.5	5.1
<b>Transportation</b>	<b>-21.9</b>	<b>-21.7</b>	<b>0.2</b>	<b>-99.6</b>	<b>-145.6</b>	<b>-46.0</b>
Inflows	29.0	29.7	0.7	259.8	250.5	-9.3
Outflows	50.9	51.4	0.5	359.4	396.1	36.7
<b>Travel</b>	<b>58.9</b>	<b>66.5</b>	<b>7.6</b>	<b>608.8</b>	<b>690.7</b>	<b>81.9</b>
Inflows	85.0	89.6	4.6	784.3	841.0	56.7
Outflows	26.1	23.1	-3.0	175.5	150.3	-25.2
<b>Other Services</b>	<b>-31.8</b>	<b>-29.9</b>	<b>1.9</b>	<b>-243.2</b>	<b>-235.7</b>	<b>7.5</b>
Inflows	29.8	30.1	0.3	208.3	209.4	1.1
Outflows	61.6	60.0	-1.6	451.5	445.1	-6.4
<b>Income (Net)</b>	<b>-19.6</b>	<b>-30.3</b>	<b>-10.7</b>	<b>-304.1</b>	<b>-340.6</b>	<b>-36.5</b>
<b>Compensation of Employees</b>	<b>15.4</b>	<b>14.8</b>	<b>-0.6</b>	<b>58.5</b>	<b>58.2</b>	<b>-0.3</b>
Inflows	20.6	20.0	-0.6	88.4	92.5	4.1
Outflows	5.2	5.2	0.0	29.9	34.3	4.4
<b>Investment Income</b>	<b>-35.0</b>	<b>-45.1</b>	<b>-10.1</b>	<b>-362.6</b>	<b>-398.8</b>	<b>-36.2</b>
Inflows	11.2	14.0	2.8	76.9	95.0	18.1
Outflows	46.2	59.1	12.9	439.5	493.8	54.3
- Bank of Jamaica	0.0	0.0	0.0	0.2	0.5	0.3
- Government Direct	7.8	25.2	17.4	166.7	196.5	29.8
- Government Guaranteed	0.0	0.0	0.0	0.9	1.4	0.5
- Private	0.0	0.0	0.0	0.0	0.0	0.0
- Direct Investment	26.9	22.4	-4.5	191.2	215.0	23.8
- Other	11.5	11.5	0.0	80.4	80.4	0.0
<b>Current Transfers (Net)</b>	<b>132.5</b>	<b>122.2</b>	<b>-10.3</b>	<b>797.5</b>	<b>873.8</b>	<b>76.3</b>
Inflows	182.3	155.7	-26.6	1048.3	1132.7	84.4
Outflows	49.8	33.5	-16.3	250.8	258.9	8.1
<b>Official</b>	<b>21.0</b>	<b>8.0</b>	<b>-13.0</b>	<b>88.8</b>	<b>63.8</b>	<b>-25.0</b>
Inflows	21.3	8.3	-13.0	90.9	65.9	-25.0
Outflows	0.3	0.3	0.0	2.1	2.1	0.0
<b>Private</b>	<b>111.5</b>	<b>114.2</b>	<b>2.7</b>	<b>708.7</b>	<b>810.0</b>	<b>101.3</b>
Inflows	161.0	147.4	-13.6	957.4	1066.8	109.4
Outflows	49.5	33.2	-16.3	248.7	256.8	8.1

	Balance of Payments of Jamaica			Balance of Payments of Jamaica		
	US\$Mn.			US\$Mn.		
	Oct 2004	Oct 1/ 2005	Change	Apr-Oct 2004/05	Apr-Oct 1/ 2005/06	Change
<b>Capital &amp; Financial Account (Net)</b>	<b>71.4</b>	<b>91.2</b>	<b>19.8</b>	<b>355.2</b>	<b>596.3</b>	<b>241.1</b>
<b>Capital Account (Net)</b>	<b>0.2</b>	<b>-1.0</b>	<b>-1.2</b>	<b>1.2</b>	<b>-6.9</b>	<b>-8.1</b>
<b>1. Capital Transfers</b>	0.2	-1.0	-1.2	1.2	-6.9	-8.1
<b>Official</b>	1.1	0.0	-1.1	8.0	0.2	-7.8
Inflows	1.1	0.0	-1.1	8.0	0.2	-7.8
Outflows	0.0	0.0	0.0	0.0	0.0	0.0
<b>Private</b>	-0.9	-1.0	-0.1	-6.8	-7.1	-0.3
Inflows	1.9	1.8	-0.1	12.8	12.5	-0.3
Outflows	2.8	2.8	0.0	19.6	19.6	0.0
<b>2. Acq/disp. of non-produced non-fin. assets</b>	<b>0.0</b>	<b>0.0</b>	<b>0.0</b>	<b>0.0</b>	<b>0.0</b>	<b>0.0</b>
Inflows	0.0	0.0	0.0	0.0	0.0	0.0
Outflows	0.0	0.0	0.0	0.0	0.0	0.0
<b>Financial Account (Net)</b>	<b>71.2</b>	<b>92.2</b>	<b>21.0</b>	<b>354.0</b>	<b>603.2</b>	<b>249.2</b>
<b>Other Official Investments (incl. Govt. Reserves)</b>	<b>173.5</b>	<b>104.6</b>	<b>-68.9</b>	<b>280.3</b>	<b>249.9</b>	<b>-30.4</b>
Inflows	189.0	255.4	66.4	641.5	1059.9	418.4
Outflows	15.5	150.8	135.3	361.2	810.0	448.8
<b>Other Private Investments (incl.errors &amp; omissions)</b>	<b>107.8</b>	<b>-52.4</b>	<b>-160.2</b>	<b>331.7</b>	<b>530.7</b>	<b>199.0</b>
Inflows	277.5	199.5	-78.0	1648.7	2122.1	473.4
Outflows	169.7	251.9	82.2	1317.0	1591.4	274.4
<b>Reserves</b>	<b>-210.1</b>	<b>40.0</b>	<b>250.1</b>	<b>-258.0</b>	<b>-177.4</b>	

**BALANCE OF PAYMENTS OF JAMAICA  
US\$MN**

	Aug			Sep			Jan-Sep			Oct			Jan-Oct		
	2004	2005	Change	2004	2005	Change	2004	2005	Change	2004	2005	Change	2004	2005	Change
<b>1. Current Account</b>	<b>-98.2</b>	<b>-118.7</b>	<b>-20.5</b>	<b>-75.3</b>	<b>-71.3</b>	<b>4.0</b>	<b>-318.2</b>	<b>-595.6</b>	<b>-277.4</b>	<b>-71.4</b>	<b>-91.2</b>	<b>-19.8</b>	<b>-389.6</b>	<b>-686.8</b>	<b>-297.2</b>
<b>A. Goods Balance</b>	<b>-177.4</b>	<b>-249.2</b>	<b>-71.8</b>	<b>-158.5</b>	<b>-181.2</b>	<b>-22.7</b>	<b>-1347.0</b>	<b>-1831.7</b>	<b>-484.7</b>	<b>-189.5</b>	<b>-198.0</b>	<b>-8.5</b>	<b>-1536.5</b>	<b>-2029.7</b>	<b>-493.2</b>
Exports	130.9	151.9	21.0	89.2	141.8	52.6	1203.3	1229.7	26.4	120.9	118.7	-2.2	1324.2	1348.4	24.2
Imports	308.3	401.1	92.8	247.7	323.0	75.3	2550.3	3061.4	511.1	310.4	316.7	6.3	2860.7	3378.1	517.4
<b>B. Services Balance</b>	<b>42.1</b>	<b>35.1</b>	<b>-7.0</b>	<b>-22.6</b>	<b>5.4</b>	<b>28.0</b>	<b>463.0</b>	<b>549.1</b>	<b>86.1</b>	<b>5.2</b>	<b>14.9</b>	<b>9.7</b>	<b>468.2</b>	<b>564.0</b>	<b>95.8</b>
Transportation	-16.3	-25.3	-9.0	-18.7	-25.8	-7.1	-91.8	-152.7	-60.9	-21.9	-21.7	0.2	-113.7	-174.4	-60.7
Travel	95.8	94.0	-1.8	17.2	56.2	39.0	875.1	1011.6	136.5	58.9	66.5	7.6	934.0	1078.1	144.1
Other Services	-37.4	-33.6	3.8	-21.1	-25.0	-3.9	-320.3	-309.8	10.5	-31.8	-29.9	1.9	-352.1	-339.7	12.4
<b>C. Income</b>	<b>-64.0</b>	<b>-37.0</b>	<b>27.0</b>	<b>-17.0</b>	<b>-26.0</b>	<b>-9.0</b>	<b>-432.8</b>	<b>-459.5</b>	<b>-26.7</b>	<b>-19.6</b>	<b>-30.3</b>	<b>-10.7</b>	<b>-452.4</b>	<b>-489.8</b>	<b>-37.4</b>
Compensation of employees	10.3	12.0	1.7	10.1	13.2	3.1	47.9	50.1	2.2	15.4	14.8	-0.6	63.3	64.9	1.6
Investment Income	-74.3	-49.0	25.3	-27.1	-39.2	-12.1	-480.7	-509.6	-28.9	-35.0	-45.1	-10.1	-515.7	-554.7	-39.0
<b>D. Current Transfers</b>	<b>101.1</b>	<b>132.4</b>	<b>31.3</b>	<b>122.8</b>	<b>130.5</b>	<b>7.7</b>	<b>998.6</b>	<b>1146.5</b>	<b>147.9</b>	<b>132.5</b>	<b>122.2</b>	<b>-10.3</b>	<b>1131.1</b>	<b>1268.7</b>	<b>137.6</b>
General Government	9.0	9.1	0.1	21.2	8.1	-13.1	95.3	95.0	-0.3	21.0	8.0	-13.0	116.3	103.0	-13.3
Other Sector	92.1	123.3	31.2	101.6	122.4	20.8	903.3	1051.5	148.2	111.5	114.2	2.7	1014.8	1165.7	150.9
<b>2. Capital &amp; Financial Account</b>	<b>98.2</b>	<b>118.7</b>	<b>20.5</b>	<b>75.3</b>	<b>71.3</b>	<b>-4.0</b>	<b>318.2</b>	<b>595.6</b>	<b>277.4</b>	<b>71.4</b>	<b>91.2</b>	<b>19.8</b>	<b>389.6</b>	<b>686.8</b>	<b>297.2</b>
<b>A. Capital Account</b>	<b>0.0</b>	<b>-0.9</b>	<b>-0.9</b>	<b>-0.2</b>	<b>-0.9</b>	<b>-0.7</b>	<b>0.6</b>	<b>-8.9</b>	<b>-9.5</b>	<b>0.2</b>	<b>-1.0</b>	<b>-1.2</b>	<b>0.8</b>	<b>-9.9</b>	<b>-10.7</b>
<b>Capital Transfers</b>	<b>0.0</b>	<b>-0.9</b>	<b>-0.9</b>	<b>-0.2</b>	<b>-0.9</b>	<b>-0.7</b>	<b>0.6</b>	<b>-8.9</b>	<b>-9.5</b>	<b>0.2</b>	<b>-1.0</b>	<b>-1.2</b>	<b>0.8</b>	<b>-9.9</b>	<b>-10.7</b>
General Government	1.1	0.0	-1.1	1.1	0.0	-1.1	10.3	0.3	-10.0	1.1	0.0	-1.1	11.4	0.3	-11.1
Other Sector	-1.1	-0.9	0.2	-1.3	-0.9	0.4	-9.7	-9.2	0.5	-0.9	-1.0	-0.1	-10.6	-10.2	0.4
<b>Acq/disp. of non-produced non-fin. assets</b>	<b>0.0</b>	<b>0.0</b>	<b>0.0</b>	<b>0.0</b>	<b>0.0</b>	<b>0.0</b>	<b>0.0</b>	<b>0.0</b>	<b>0.0</b>	<b>0.0</b>	<b>0.0</b>	<b>0.0</b>	<b>0.0</b>	<b>0.0</b>	<b>0.0</b>
<b>B. Financial Account</b>	<b>98.2</b>	<b>119.6</b>	<b>21.4</b>	<b>75.5</b>	<b>72.2</b>	<b>-3.3</b>	<b>317.6</b>	<b>604.5</b>	<b>286.9</b>	<b>71.2</b>	<b>92.2</b>	<b>21.0</b>	<b>388.8</b>	<b>696.7</b>	<b>307.9</b>
Other Official Investment (incl. Govt. Reserves)	-194.6	109.2	303.8	-23.0	-28.0	-5.0	360.3	96.8	-263.5	173.5	104.6	-68.9	533.8	201.4	-332.4
Other Private Investment (incl. errors & omissions)	341.6	-21.3	-362.9	71.6	101.7	30.1	408.9	768.2	359.3	107.8	-52.4	-160.2	516.7	715.8	199.1
Reserves	-48.8	31.7		26.9	-1.5		-451.6	-260.5		-210.1	40.0		-661.7	-220.5	

1/Provisional

## BALANCE OF PAYMENTS OF JAMAICA

US\$MN

	Aug 2004/05	Aug 1/ 2005/06	Change	Sep 2004/05	Sep 1/ 2005/06	Change	Apr-Sep 2004/05	Apr-Sep 1/ 2005/06	Change	Oct 2004/05	Oct 1/ 2005/06	Change	Apr-Oct 2004/05	Apr-Oct 1/ 2005/06	Change
<b>1. Current Account</b>	<b>-98.2</b>	<b>-118.7</b>	<b>-20.5</b>	<b>-75.3</b>	<b>-71.3</b>	<b>4.0</b>	<b>-283.8</b>	<b>-505.1</b>	<b>-221.3</b>	<b>-71.4</b>	<b>-91.2</b>	<b>-19.8</b>	<b>-355.2</b>	<b>-596.3</b>	<b>-241.1</b>
<b>A. Goods Balance</b>	<b>-177.4</b>	<b>-249.2</b>	<b>-71.8</b>	<b>-158.5</b>	<b>-181.2</b>	<b>-22.7</b>	<b>-925.1</b>	<b>-1240.9</b>	<b>-315.8</b>	<b>-189.5</b>	<b>-198.0</b>	<b>-8.5</b>	<b>-1114.6</b>	<b>-1438.9</b>	<b>-324.3</b>
Exports	130.9	151.9	21.0	89.2	141.8	52.6	787.3	852.8	65.5	120.9	118.7	-2.2	908.2	971.5	63.3
Imports	308.3	401.1	92.8	247.7	323.0	75.3	1712.4	2093.7	381.3	310.4	316.7	6.3	2022.8	2410.4	387.6
<b>B. Services Balance</b>	<b>42.1</b>	<b>35.1</b>	<b>-7.0</b>	<b>-22.6</b>	<b>5.4</b>	<b>28.0</b>	<b>260.8</b>	<b>294.5</b>	<b>33.7</b>	<b>5.2</b>	<b>14.9</b>	<b>9.7</b>	<b>266.0</b>	<b>309.4</b>	<b>43.4</b>
Transportation	-16.3	-25.3	-9.0	-18.7	-25.8	-7.1	-77.7	-123.9	-46.2	-21.9	-21.7	0.2	-99.6	-145.6	-46.0
Travel	95.8	94.0	-1.8	17.2	56.2	39.0	549.9	624.2	74.3	58.9	66.5	7.6	608.8	690.7	81.9
Other Services	-37.4	-33.6	3.8	-21.1	-25.0	-3.9	-211.4	-205.8	5.6	-31.8	-29.9	1.9	-243.2	-235.7	7.5
<b>C. Income</b>	<b>-64.0</b>	<b>-37.0</b>	<b>27.0</b>	<b>-17.0</b>	<b>-26.0</b>	<b>-9.0</b>	<b>-284.5</b>	<b>-310.3</b>	<b>-25.8</b>	<b>-19.6</b>	<b>-30.3</b>	<b>-10.7</b>	<b>-304.1</b>	<b>-340.6</b>	<b>-36.5</b>
Compensation of employees	10.3	12.0	1.7	10.1	13.2	3.1	43.1	43.4	0.3	15.4	14.8	-0.6	58.5	58.2	-0.3
Investment Income	-74.3	-49.0	25.3	-27.1	-39.2	-12.1	-327.6	-353.7	-26.1	-35.0	-45.1	-10.1	-362.6	-398.8	-36.2
<b>D. Current Transfers</b>	<b>101.1</b>	<b>132.4</b>	<b>31.3</b>	<b>122.8</b>	<b>130.5</b>	<b>7.7</b>	<b>665.0</b>	<b>751.6</b>	<b>86.6</b>	<b>132.5</b>	<b>122.2</b>	<b>-10.3</b>	<b>797.5</b>	<b>873.8</b>	<b>76.3</b>
General Government	9.0	9.1	0.1	21.2	8.1	-13.1	67.8	55.8	-12.0	21.0	8.0	-13.0	88.8	63.8	-25.0
Other Sector	92.1	123.3	31.2	101.6	122.4	20.8	597.2	695.8	98.6	111.5	114.2	2.7	708.7	810.0	101.3
<b>2. Capital &amp; Financial Account</b>	<b>98.2</b>	<b>118.7</b>	<b>20.5</b>	<b>75.3</b>	<b>71.3</b>	<b>-4.0</b>	<b>283.8</b>	<b>505.1</b>	<b>221.3</b>	<b>71.4</b>	<b>91.2</b>	<b>19.8</b>	<b>355.2</b>	<b>596.3</b>	<b>241.1</b>
<b>A. Capital Account</b>	<b>0.0</b>	<b>-0.9</b>	<b>-0.9</b>	<b>-0.2</b>	<b>-0.9</b>	<b>-0.7</b>	<b>1.0</b>	<b>-5.9</b>	<b>-6.9</b>	<b>0.2</b>	<b>-1.0</b>	<b>-1.2</b>	<b>1.2</b>	<b>-6.9</b>	<b>-8.1</b>
<b>Capital Transfers</b>	<b>0.0</b>	<b>-0.9</b>	<b>-0.9</b>	<b>-0.2</b>	<b>-0.9</b>	<b>-0.7</b>	<b>1.0</b>	<b>-5.9</b>	<b>-6.9</b>	<b>0.2</b>	<b>-1.0</b>	<b>-1.2</b>	<b>1.2</b>	<b>-6.9</b>	<b>-8.1</b>
General Government	1.1	0.0	-1.1	1.1	0.0	-1.1	6.9	0.2	-6.7	1.1	0.0	-1.1	8.0	0.2	-7.8
Other Sector	-1.1	-0.9	0.2	-1.3	-0.9	0.4	-5.9	-6.1	-0.2	-0.9	-1.0	-0.1	-6.8	-7.1	-0.3
<b>Acq/dis. of non-produced non-fin. assets</b>	<b>0.0</b>	<b>0.0</b>	<b>0.0</b>	<b>0.0</b>	<b>0.0</b>	<b>0.0</b>	<b>0.0</b>	<b>0.0</b>	<b>0.0</b>	<b>0.0</b>	<b>0.0</b>	<b>0.0</b>	<b>0.0</b>	<b>0.0</b>	<b>0.0</b>
<b>B. Financial Account</b>	<b>98.2</b>	<b>119.6</b>	<b>21.4</b>	<b>75.5</b>	<b>72.2</b>	<b>-3.3</b>	<b>282.8</b>	<b>511.0</b>	<b>228.2</b>	<b>71.2</b>	<b>92.2</b>	<b>21.0</b>	<b>354.0</b>	<b>603.2</b>	<b>249.2</b>
Other Official Investment (incl. Govt. Reserves)	-194.6	109.2	303.8	-23.0	-28.0	-5.0	106.8	145.3	38.5	173.5	104.6	-68.9	280.3	249.9	-30.4
Other Private Investment (incl. errors & omissions)	341.6	-21.3	-362.9	71.6	101.7	30.1	223.9	583.1	359.2	107.8	-52.4	-160.2	331.7	530.7	199.0
Reserves	-48.8	31.7		26.9	-1.5		-47.9	-217.4		-210.1	40.0		-258.0	-177.4	

1/Provisional

BALANCE OF PAYMENTS OF JAMAICA						
US\$MN						
	Jan-Dec	Jan-Dec	Jan-Dec	Jan-Dec	Jan-Dec	Jan-Dec
	1999	2000	2001	2002	2003	2004
<b>1. Current Account</b>	<b>-216.3</b>	<b>-367.4</b>	<b>-757.3</b>	<b>-1074.4</b>	<b>-772.6</b>	<b>-509.4</b>
<b>A. Goods Balance</b>	<b>-1186.5</b>	<b>-1441.5</b>	<b>-1618.2</b>	<b>-1870.5</b>	<b>-1942.6</b>	<b>-1944.5</b>
Exports	1499.1	1562.8	1454.4	1309.1	1385.6	1601.6
Imports	2685.6	3004.3	3072.6	3179.6	3328.2	3546.1
<b>B. Services Balance</b>	<b>655.4</b>	<b>603.2</b>	<b>383.1</b>	<b>314.7</b>	<b>552.3</b>	<b>571.7</b>
Transportation	-233.6	-256.6	-256.2	-245.6	-143.6	-150.3
Travel	1052.4	1123.9	1026.2	950.3	1102.7	1151.5
Other Services	-163.4	-264.1	-386.9	-390.0	-406.7	-429.5
<b>C. Income</b>	<b>-332.5</b>	<b>-349.9</b>	<b>-437.8</b>	<b>-605.5</b>	<b>-571.4</b>	<b>-582.7</b>
Compensation of employees	70.3	67.4	74.6	82.1	70.7	84.5
Investment Income	-402.8	-417.3	-512.4	-687.6	-642.1	-667.2
<b>D. Current Transfers</b>	<b>647.3</b>	<b>820.8</b>	<b>915.6</b>	<b>1086.9</b>	<b>1189.1</b>	<b>1446.1</b>
General Government	45.8	147.9	119.7	107.6	105.2	159.9
Other Sector	601.5	672.9	795.9	979.3	1083.9	1286.2
<b>2. Capital &amp; Financial Account</b>	<b>216.3</b>	<b>367.4</b>	<b>757.3</b>	<b>1074.4</b>	<b>772.6</b>	<b>509.4</b>
<b>A. Capital Account</b>	<b>13.1</b>	<b>2.2</b>	<b>-23.6</b>	<b>-16.9</b>	<b>0.1</b>	<b>2.2</b>
<b>Capital Transfers</b>	<b>13.1</b>	<b>2.2</b>	<b>-23.6</b>	<b>-16.9</b>	<b>-0.3</b>	<b>2.2</b>
General Government	4.1	15.6	2.2	0.2	0.1	13.8
Other Sector	9.0	-13.4	-25.8	-17.1	-0.4	-11.6
<b>B. Financial Account</b>	<b>203.2</b>	<b>365.2</b>	<b>780.9</b>	<b>1091.3</b>	<b>772.5</b>	<b>507.2</b>
Other Official Investment	-331.4	383.7	653.4	77.1	-362.5	479.2
Other Private Investment (incl.errors & omissions)	402.8	500.8	998.8	770.5	702.9	721.6
Reserves	131.8	-519.3	-871.3	243.7	432.1	-693.6

BALANCE OF PAYMENTS OF JAMAICA						
US\$MN						
	Apr-Mar	Apr-Mar	Apr-Mar	Apr-Mar	Apr-Mar	Apr-Mar 1/
	1999/00	2000/01	2001/02	2002/03	2003/04	2004/05
<b>1. Current Account</b>	<b>-304.1</b>	<b>-497.2</b>	<b>-753.2</b>	<b>-1161.9</b>	<b>-561.9</b>	<b>-565.5</b>
<b>A. Goods Balance</b>	<b>-1251.9</b>	<b>-1541.7</b>	<b>-1577.3</b>	<b>-2025.8</b>	<b>-1832.0</b>	<b>-2113.4</b>
Exports	1557.7	1517.7	1423.7	1313.6	1467.4	1562.5
Imports	2809.6	3059.4	3001.0	3339.4	3299.3	3675.9
<b>B. Services Balance</b>	<b>622.4</b>	<b>592.7</b>	<b>323.2</b>	<b>367.8</b>	<b>596.5</b>	<b>624.1</b>
Transportation	-244.1	-253.6	-253.7	-226.6	-128.0	-165.0
Travel	1058.3	1149.6	955.6	985.7	1144.6	1213.7
Other Services	-191.8	-303.3	-378.7	-391.3	-420.1	-424.6
<b>C. Income</b>	<b>-369.5</b>	<b>-382.4</b>	<b>-457.6</b>	<b>-613.0</b>	<b>-565.8</b>	<b>-583.6</b>
Compensation of employees	67.7	67.4	73.4	82.8	71.9	86.4
Investment Income	-437.2	-449.8	-531.0	-695.8	-637.6	-670.0
<b>D. Current Transfers</b>	<b>694.9</b>	<b>834.2</b>	<b>958.5</b>	<b>1109.1</b>	<b>1239.4</b>	<b>1507.4</b>
General Government	70.4	141.5	116.5	108.7	106.3	171.6
Other Sector	624.5	692.7	842.0	1000.4	1133.1	1335.8
<b>2. Capital &amp; Financial Account</b>	<b>304.1</b>	<b>497.2</b>	<b>753.2</b>	<b>1161.9</b>	<b>561.9</b>	<b>565.5</b>
<b>A. Capital Account</b>	<b>12.5</b>	<b>-6.7</b>	<b>-24.2</b>	<b>-12.1</b>	<b>0.5</b>	<b>-0.4</b>
<b>Capital Transfers</b>	<b>12.5</b>	<b>-6.7</b>	<b>-24.2</b>	<b>-12.1</b>	<b>0.1</b>	<b>-0.4</b>
General Government	9.0	10.2	0.4	0.2	3.5	10.5
Other Sector	3.5	-16.9	-24.6	-12.3	-3.4	-10.9
<b>B. Financial Account</b>	<b>291.6</b>	<b>503.9</b>	<b>777.4</b>	<b>1174.0</b>	<b>561.4</b>	<b>565.9</b>
Other Official Investment	-123.2	342.0	591.2	-223.3	142.0	177.2
Other Private Investment (incl.errors & omissions)	536.8	744.7	841.6	795.4	648.3	721.7
Reserves	-122.0	-582.8	-655.4	601.9	-228.9	-333.0
1/Provisional						