



THE BALANCE OF PAYMENTS

STATISTICAL UPDATE

November 2005

External Sector Statistics Unit
Economic Information & Publications Department
RESEARCH AND ECONOMIC PROGRAMMING DIVISION

BANK OF JAMAICA
P.O. Box 621
Kingston, Jamaica

TABLE OF CONTENTS

	Pages
External Trade	1
Exports.....	7
Garments.....	8
Bauxite.....	10
Selected Non -Traditionals.....	12
Tourism	13
Private Transfer flows.....	17
B. O. P. Reports.....	19

EXTERNAL TRADE US\$000

	NOV 2004	NOV 1/ 2005	CHANGE	%CHANGE	JAN-NOV 2004	JAN-NOV 1/ 2005	CHANGE	%CHANGE
TOTAL GOODS EXPORTS(F.O.B)	131059	146017	14958	11.4	1455370	1494563	39193	2.7
TOTAL GOODS IMPORTS(C.I.F)	419169	389822	-29347	-7.0	3727268	4365047	637779	17.1
TRADE BALANCE	-288110	-243805	44305	15.4	-2271898	-2870484	-598586	-26.3

VALUE OF TOTAL GOODS EXPORTS US\$000

	NOV 2004	NOV 1/ 2005	CHANGE	%CHANGE	JAN-NOV 2004	JAN-NOV 1/ 2005	CHANGE	%CHANGE
0.FOOD	11907	9253	-2654	-22.3	238439	185132	-53307	-22.4
1.BEVER. & TOBAC	7563	6789	-774	-10.2	55838	74945	19107	34.2
2.CRUDE MATS	82554	94911	12357	15.0	823496	924898	101402	12.3
3.MINERAL FUELS	3860	16548	12688	328.7	30998	90137	59139	190.8
4.ANI.& VEG OILS	9	33	24	266.7	57	118	61	107.0
5.CHEMICALS	1773	3161	1388	78.3	69539	55223	-14316	-20.6
6.MANUF. GOODS	853	902	49	5.7	13054	9410	-3644	-27.9
7.MACH.& TRANSP.	1314	1807	493	37.5	23658	17149	-6509	-27.5
8.MISC. MANUF	2320	2030	-290	-12.5	20050	19789	-261	-1.3
9.MISC. COMMDS.	0	0	0	-	0	0	0	-
GENERAL MERCHANDISE EXPS.	112153	135434	23281	20.8	1275129	1376801	101672	8.0
FREEZONE EXPORTS	13047	4724	-8323	-63.8	115788	53309	-62479	-54.0
GOODS PROCURED IN PORTS	5859	5859	0	0.0	64453	64453	0	0.0
TOTAL GOODS EXPORTS	131059	146017	14958	11.4	1455370	1494563	39193	2.7

TRADITIONAL & NON-TRADITIONAL EXPORTS US\$000

	NOV 2004	NOV 1/ 2005	CHANGE	%CHANGE	JAN-NOV 2004	JAN-NOV 1/ 2005	CHANGE	%CHANGE
MAJOR TRAD. EXPORT	81976	91979	10003	12.2	906507	986738	80231	8.9
BAUXITE	5817	7425	1608	27.6	78466	88158	9692	12.4
ALUMINA	76159	84261	8102	10.6	717088	818021	100933	14.1
SUGAR	0	0	0	-	98139	76805	-21334	-21.7
BANANAS	0	293	293	-	12814	3754	-9060	-70.7
OTHER TRAD. EXPORT	7202	2547	-4655	-64.6	70189	56878	-13311	-19.0
CITRUS	123	76	-47	-38.2	2137	1423	-714	-33.4
COCOA	131	80	-51	-38.9	1759	1287	-472	-26.8
COFFEE	2986	234	-2752	-92.2	36641	17096	-19545	-53.3
PIMENTO	431	125	-306	-71.0	1904	2689	785	41.2
RUM	3468	1990	-1478	-42.6	26286	32598	6312	24.0
GYPSUM	63	42	-21	-33.3	1462	1785	323	22.1
NON-TRAD. EXPORTS	20376	37752	17376	85.3	260702	305587	44885	17.2
RE-EXPORTS	2599	3156	557	21.4	37731	27598	-10133	-26.9
GENERAL MERCHANDISE EXPS.	112153	135434	23281	20.8	1275129	1376801	101672	8.0
FREEZONE EXPORTS	13047	4724	-8323	-63.8	115788	53309	-62479	-54.0
GOODS PROCURED IN PORTS	5859	5859	0	0.0	64453	64453	0	0.0
TOTAL GOODS EXPORTS	131059	146017	14958	11.4	1455370	1494563	39193	2.7

VALUE OF GOODS IMPORTS BY S.I.T.C. US\$000

	NOV 2004	NOV 1/ 2005	CHANGE	%CHANGE	JAN-NOV 2004	JAN-NOV 1/ 2005	CHANGE	%CHANGE
0.FOOD	47932	62232	14300	29.8	475065	545614	70549	14.9
1.BEV. & TOBAC	5138	4670	-468	-9.1	41650	50201	8551	20.5
2.CRUDE MATS.	4776	5997	1221	25.6	58389	71087	12698	21.7
3.MIN.FUEL	82032	55154	-26878	-32.8	849557	1188930	339373	39.9
4.ANI & VEG OIL	4629	2745	-1884	-40.7	29608	25386	-4222	-14.3
5.CHEMICAL	42211	41944	-267	-0.6	371275	489586	118311	31.9
6.MANUF. GOOD	75900	57052	-18848	-24.8	514383	593820	79437	15.4
7.MACH.& TRANSP	87657	90192	2535	2.9	780015	790440	10425	1.3
8.MISC.MAN.GOOD	50031	51447	1416	2.8	379231	429925	50694	13.4
9.MISC. COMMDS.	6258	7588	1330	21.3	60017	62331	2314	3.9
GENERAL MERCHANDISE IMPORTS	406564	379021	-27543	-6.8	3559190	4247320	688130	19.3
FREEZONE IMPORTS	3247	1443	-1804	-55.6	65140	14789	-50351	-77.3
GOODS PROCURED IN PORTS	9358	9358	0	0.0	102938	102938	0	0.0
TOTAL GOODS IMPORTS	419169	389822	-29347	-7.0	3727268	4365047	637779	17.1

1/PROVISIONAL

MAJOR TRADITIONALS (VOLUME, VALUE, PRICE)

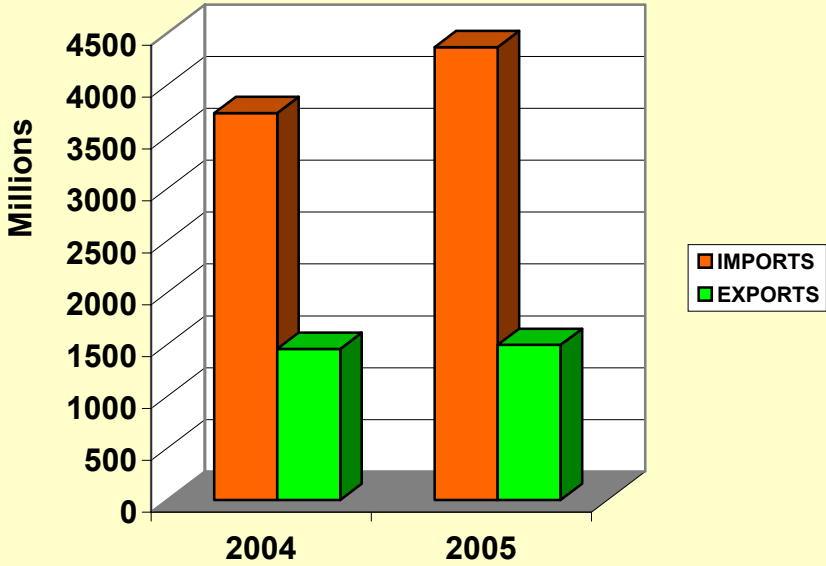
	NOV 2004	NOV 1/ 2005	CHANGE	%CHANGE	JAN-NOV 2004	JAN-NOV 1/ 2005	CHANGE	%CHANGE
BAUXITE								
Volume ('000 tonnes)	244.2	305.1	60.9	24.9	3257.1	3621.9	364.9	11.2
Value (U.S. \$000)	5817.0	7425.0	1608.0	27.6	78466.0	88158.0	9692.0	12.4
Price (US \$/tonne)	23.8	24.3	0.4	1.8	24.1	24.3	0.2	1.0
ALUMINA								
Volume ('000 tonnes)	366.5	396.6	30.1	8.2	3551.9	3780.9	229.0	6.4
Value (U.S. \$000)	76159.0	84261.0	8102.0	10.6	717088.0	818021.4	100933.4	14.1
Price (US \$/tonne)	207.8	212.5	4.8	2.3	201.9	216.4	14.5	7.2
SUGAR								
Volume ('000 tonnes)	0.0	0.0	0.0	-	157.2	112.9	-44.4	-28.2
Value (U.S. \$000)	0.0	0.0	0.0	-	98139.0	76805.0	-21334.0	-21.7
Price (US \$/tonne)	0.0	0.0	0.0	-	624.2	680.5	56.3	9.0
BANANAS								
Volume ('000 tonnes)	0.0	0.8	0.8	-	27.6	9.6	-18.0	-65.1
Value (U.S. \$000)	0.0	293.0	293.0	-	12814.0	3754.0	-9060.0	-70.7
Price (US \$/tonne)	0.0	349.6	349.6	-	463.6	389.5	-74.1	-16.0

1/PROVISIONAL

External Sector Statistics Unit.

2006 February

VALUE OF IMPORTS & EXPORT US\$Mn
JAN - NOVEMBER



EXTERNAL TRADE US\$000

	NOV 2004/2005	NOV 1/ 2005/2006	CHANGE	%CHANGE	APR-NOV 2004/2005	APR-NOV 1/ 2005/2006	CHANGE	%CHANGE
TOTAL GOODS EXPORTS(F.O.B)	131059	146017	14958	11.4	1039402	1117586	78184	7.5
TOTAL GOODS IMPORTS(C.I.F)	419169	389822	-29347	-7.0	2758361	3237028	478667	17.4
TRADE BALANCE	-288110	-243805	44305	15.4	-1718959	-2119442	-400483	-23.3

VALUE OF TOTAL GOODS EXPORTS US\$000

	NOV 2004/2005	NOV 1/ 2005/2006	CHANGE	%CHANGE	APR-NOV 2004/2005	APR-NOV 1/ 2005/2006	CHANGE	%CHANGE
0.FOOD	11907	9253	-2654	-22.3	156363	126133	-30230	-19.3
1.BEVER. & TOBAC	7563	6789	-774	-10.2	42719	56764	14045	32.9
2.CRUDE MATS	82554	94911	12357	15.0	591599	687789	96190	16.3
3.MINERAL FUELS	3860	16548	12688	328.7	24316	84985	60669	249.5
4.ANI.& VEG OILS	9	33	24	266.7	45	93	48	106.7
5.CHEMICALS	1773	3161	1388	78.3	48088	37418	-10670	-22.2
6.MANUF. GOODS	853	902	49	5.7	6934	6923	-11	-0.2
7.MACH.& TRANSP.	1314	1807	493	37.5	14490	12676	-1814	-12.5
8.MISC. MANUF	2320	2030	-290	-12.5	14624	15370	746	5.1
9.MISC. COMMDS.	0	0	0	-	0	0	0	-
GENERAL MERCHANDISE EXPS.	112153	135434	23281	20.8	899178	1028151	128973	14.3
FREEZONE EXPORTS	13047	4724	-8323	-63.8	93349	42560	-50789	-54.4
GOODS PROCURED IN PORTS	5859	5859	0	0.0	46875	46875	0	0.0
TOTAL GOODS EXPORTS	131059	146017	14958	11.4	1039402	1117586	78184	7.5

TRADITIONAL & NON-TRADITIONAL EXPORTS US\$000

	NOV 2004/2005	NOV 1/ 2005/2006	CHANGE	%CHANGE	APR-NOV 2004/2005	APR-NOV 1/ 2005/2006	CHANGE	%CHANGE
MAJOR TRAD. EXPORT	81976	91979	10003	12.2	635075	721781	86706	13.7
BAUXITE	5817	7425	1608	27.6	54344	62402	8058	14.8
ALUMINA	76159	84261	8102	10.6	516966	610250	93284	18.0
SUGAR	0	0	0	-	55593	45375	-10218	-18.4
BANANAS	0	293	293	-	8172	3754	-4418	-54.1
OTHER TRAD. EXPORT	7202	2547	-4655	-64.6	53156	41768	-11388	-21.4
CITRUS	123	76	-47	-38.2	878	444	-434	-49.4
COCOA	131	80	-51	-38.9	1452	856	-596	-41.0
COFFEE	2986	234	-2752	-92.2	28849	12642	-16207	-56.2
PIMENTO	431	125	-306	-71.0	1334	2316	982	73.6
RUM	3468	1990	-1478	-42.6	19606	24273	4667	23.8
GYPSUM	63	42	-21	-33.3	1037	1237	200	19.3
NON-TRAD. EXPORTS	20376	37752	17376	85.3	188615	244265	55650	29.5
RE-EXPORTS	2599	3156	557	21.4	22332	20337	-1995	-8.9
GENERAL MERCHANDISE EXPS.	112153	135434	23281	20.8	899178	1028151	128973	14.3
FREEZONE EXPORTS	13047	4724	-8323	-63.8	93349	42560	-50789	-54.4
GOODS PROCURED IN PORTS	5859	5859	0	0.0	46875	46875	0	0.0
TOTAL GOODS EXPORTS	131059	146017	14958	11.4	1039402	1117586	78184	7.5

VALUE OF GOODS IMPORTS BY S.I.T.C. US\$000

	NOV 2004/2005	NOV 1/ 2005/2006	CHANGE	%CHANGE	APR-NOV 2004/2005	APR-NOV 1/ 2005/2006	CHANGE	%CHANGE
0.FOOD	47932	62232	14300	29.8	341835	405845	64010	18.7
1.BEV. & TOBAC	5138	4670	-468	-9.1	30736	37472	6736	21.9
2.CRUDE MATS.	4776	5997	1221	25.6	43931	50263	6332	14.4
3.MIN.FUEL	82032	55154	-26878	-32.8	625061	888467	263406	42.1
4.ANI & VEG OIL	4629	2745	-1884	-40.7	22340	17329	-5011	-22.4
5.CHEMICAL	42211	41944	-267	-0.6	260384	361183	100799	38.7
6.MANUF. GOOD	75900	57052	-18848	-24.8	402817	434111	31294	7.8
7.MACH.& TRANSP	87657	90192	2535	2.9	576768	586425	9657	1.7
8.MISC.MAN.GOOD	50031	51447	1416	2.8	279577	323200	43623	15.6
9.MISC. COMMDS.	6258	7588	1330	21.3	45248	47782	2534	5.6
GENERAL MERCHANDISE IMPORTS	406564	379021	-27543	-6.8	2628697	3152077	523380	19.9
FREEZONE IMPORTS	3247	1443	-1804	-55.6	54800	10087	-44713	-81.6
GOODS PROCURED IN PORTS	9358	9358	0	0.0	74864	74864	0	0.0
TOTAL GOODS IMPORTS	419169	389822	-29347	-7.0	2758361	3237028	478667	17.4

1/PROVISIONAL

MAJOR TRADITIONALS (VOLUME, VALUE, PRICE)

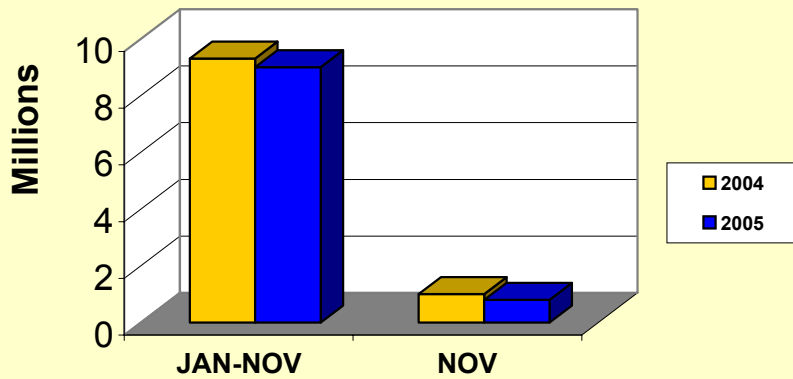
	NOV	NOV 1/	CHANGE	%CHANGE	APR-NOV	APR-NOV 1/	CHANGE	%CHANGE
	2004/2005	2005/2006			2004/2005	2005/2006		
BAUXITE								
Volume ('000 tonnes)	244.2	305.1	60.9	24.9	2270.1	2563.8	293.7	12.9
Value (U.S. \$000)	5817.0	7425.0	1608.0	27.6	54344.0	62402.0	8058.0	14.8
Price (US \$/tonne)	23.8	24.3	0.4	1.8	23.9	24.3	0.3	1.3
ALUMINA								
Volume ('000 tonnes)	366.5	396.6	30.1	8.2	2535.2	2823.2	287.9	11.4
Value (U.S. \$000)	76159.0	84261.0	8102.0	10.6	516966.0	610250.0	93284.0	18.0
Price (US \$/tonne)	207.8	212.5	4.8	2.3	203.9	216.2	12.1	6.0
SUGAR								
Volume ('000 tonnes)	0.0	0.0	0.0	-	90.6	68.0	-22.6	-24.9
Value (U.S. \$000)	0.0	0.0	0.0	-	55593.0	45375.0	-10218.0	-18.4
Price (US \$/tonne)	0.0	-	-	-	613.5	667.2	53.6	8.7
BANANAS								
Volume ('000 tonnes)	0.0	0.8	0.8	-	18.1	9.6	-8.5	-46.8
Value (U.S. \$000)	0.0	293.0	293.0	-	8172.0	3754.0	-4418.0	-54.1
Price (US \$/tonne)	0.0	349.6	349.6	-	450.8	389.5	-61.2	-13.6

1/PROVISIONAL

External Sector Statistics Unit.
2006 February

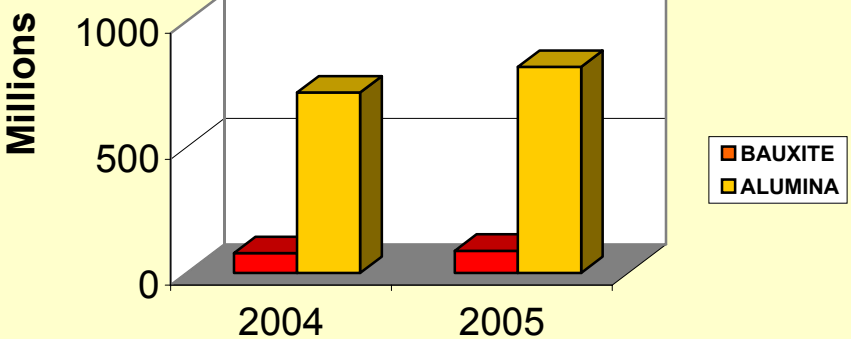
	GARMENTS EXPORTS US\$Mn.			
	2004	2005	CHANGE	%CHANGE
JANUARY	0.7	0.8	0.1	14.3
FEBRUARY	0.9	0.8	-0.1	-11.1
MARCH	0.7	0.9	0.2	28.6
JAN-MARCH	2.3	2.5	0.2	8.7
APRIL	1.2	0.9	-0.3	-25.0
MAY	0.9	0.8	-0.1	-11.1
JUNE	0.8	0.9	0.1	12.5
JAN-JUNE	5.2	5.1	-0.1	-1.9
JULY	0.8	0.9	0.1	12.5
AUGUST	0.8	0.8	0.0	0.0
SEPTEMBER	0.6	0.9	0.3	50.0
JAN-SEPTEMBER	7.4	7.7	0.3	4.1
OCTOBER	0.9	0.5	-0.4	-44.4
NOVEMBER	1.0	0.8	-0.2	-20.0
JAN-NOVEMBER	9.3	9.0	-0.3	-3.2
	2004/2005	2005/2006	CHANGE	%CHANGE
APRIL	1.2	0.9	-0.3	-25.0
MAY	0.9	0.8	-0.1	-11.1
JUNE	0.8	0.9	0.1	12.5
APRIL-JUNE	2.9	2.6	-0.3	-10.3
JULY	0.8	0.9	0.1	12.5
AUGUST	0.8	0.8	0.0	0.0
SEPTEMBER	0.6	0.9	0.3	50.0
APRIL-SEPTEMBER	5.1	5.2	0.1	2.0
OCTOBER	0.9	0.5	-0.4	-44.4
NOVEMBER	1.0	0.8	-0.2	-20.0
APRIL-NOVEMBER	7.0	6.5	-0.5	-7.1
SOURCE: STATISTICAL INSTITUTE OF JAMAICA EXTERNAL SECTOR STATISTICS 2006 February				

**GARMENTS EXPORT US\$Mn
JAN - NOVEMBER**



BAUXITE						
	2004 Volumes (Tonnes)	2005 Volumes (Tonnes)	% Change	2004 Values (\$ 000')	2005 Values (\$ 000')	% Change
JANUARY	375063.0	393019.0	4.8	9167.0	9566.0	4.4
FEBRUARY	230889.0	313182.0	35.6	5643.0	7623.0	35.1
MARCH	380995.0	351972.0	-7.6	9312.0	8567.0	-8.0
JAN-MARCH	986947.0	1058173.0	7.2	24122.0	25756.0	6.8
APRIL	425749.0	277541.0	-34.8	10124.0	6755.0	-33.3
MAY	337950.0	271106.0	-19.8	8037.0	6599.0	-17.9
JUNE	304406.0	380780.0	25.1	7239.0	9268.0	28.0
JAN-JUNE	2055052.0	1987600.0	-3.3	49522.0	48378.0	-2.3
JULY	303894.0	259555.0	-14.6	7342.0	6318.0	-13.9
AUGUST	314337.0	404689.0	28.7	7594.0	9850.0	29.7
SEPTEMBER	303576.0	352629.0	16.2	7334.0	8583.0	17.0
JAN-SEPTEMBER	2976859.0	3004473.0	0.9	71792.0	73129.0	1.9
OCTOBER	35996.0	312417.0	767.9	857.0	7604.0	787.3
NOVEMBER	244197.0	305057.0	24.9	5817.0	7425.0	27.6
JAN-NOVEMBER	3257052.0	3621947.0	11.2	78466.0	88158.0	12.4
ALUMINA						
	2004 Volumes (Tonnes)	2005 Volumes (Tonnes)	% Change	2004 Values (\$ 000')	2005 Values (\$ 000')	% Change
JANUARY	353037.0	358434.0	1.5	69492.0	77762.0	11.9
FEBRUARY	340880.0	273943.0	-19.6	67099.0	59432.0	-11.4
MARCH	322755.0	325312.0	0.8	63531.0	70577.0	11.1
JAN-MARCH	1016672.0	957689.0	-5.8	200122.0	207771.0	3.8
APRIL	419226.0	444743.0	6.1	84457.0	97612.0	15.6
MAY	297349.0	332315.0	11.8	59904.0	72937.0	21.8
JUNE	290186.0	317963.0	9.6	58461.0	69787.0	19.4
JAN-JUNE	2023433.0	2052710.0	1.4	402944.0	448107.0	11.2
JULY	371501.0	370108.0	-0.4	75686.0	79595.0	5.2
AUGUST	327109.0	342197.0	4.6	66642.0	73593.0	10.4
SEPTEMBER	154446.0	346223.0	124.2	31465.0	74459.0	136.6
JAN-SEPTEMBER	2876489.0	3111238.0	8.2	576737.0	675754.0	17.2
OCTOBER	308914.0	273021.0	-11.6	64192.0	58006.0	-9.6
NOVEMBER	366502.0	396599.0	8.2	76159.0	84261.0	10.6
JAN-NOVEMBER	3551905.0	3780858.0	6.4	717088.0	818021.0	14.1

**BAUXITE/ALUMINA US\$Mn
JAN - NOVEMBER**



EXPORTS OF SELECTED NON-TRADITIONAL DOMESTIC COMMODITIES US\$ 000

	2004	2005	%	2004	2005	%	2004/2005	2005/2006	%
	JAN-NOV	JAN-NOV 1/		NOV	NOV 1/		APR-NOV	APR-NOV 1/	
COMMODITIES									

FOOD									

ACKEE	6179.0	8558.0	38.5	5865.0	7382.0	25.9	4173.0	5844.0	40.0
FISH	6779.0	9067.0	33.8	6158.0	8423.0	36.8	4745.0	7638.0	61.0
BREADFRUIT	872.0	655.0	-24.9	818.0	595.0	-27.3	712.0	505.0	-29.1
CUCUMBERS	11.0	9.0	-18.2	11.0	9.0	0.0	8.0	6.0	-25.0
PUMPKINS	337.0	248.0	-26.4	315.0	240.0	-23.8	201.0	143.0	-28.9
OTHER VEGETABLES	241.0	242.0	0.4	223.0	217.0	-2.7	224.0	212.0	-5.4
DASHEEN	928.0	660.0	-28.9	828.0	561.0	-32.2	600.0	433.0	-27.8
CASSAVA	0.0	0.0	0.0	0.0	0.0	0.0	0.0	0.0	0.0
SWEET POTATOES	1378.0	1828.0	32.7	1197.0	1540.0	28.7	1069.0	1335.0	24.9
YAMS	13998.0	14353.0	2.5	12935.0	12852.0	-0.6	10075.0	10990.0	9.1
AVOCADOES	310.0	261.0	-15.8	274.0	213.0	-22.3	310.0	261.0	-15.8
MANGOES	851.0	921.0	8.2	851.0	921.0	0.0	709.0	773.0	9.0
OTHER ROOTS	392.0	464.0	18.4	356.0	415.0	16.6	279.0	342.0	22.6
PAPAYAS	1908.0	1804.0	-5.5	1859.0	1733.0		1295.0	1388.0	7.2
MELON	0.0	0.0	0.0	0.0	0.0	0.0	0.0	0.0	0.0
Total	34184.0	39070.0	14.3	31690.0	35101.0	10.8	24400.0	29870.0	22.4
CRUDE MATERIALS									

Cut Flowers	40.0	19.0	-52.5	39.0	19.0	0.0	24.0	10.0	-58.3
Live Plts.&Foliage	12.0	57.0	375.0	7.0	47.0	0.0	12.0	57.0	100.0
Orchids	21.0	23.0	9.5	19.0	21.0	10.5	21.0	23.0	9.5
Total	73.0	99.0	35.6	65.0	87.0	33.8	57.0	90.0	57.9
1/PROVISIONAL									
2006 February									

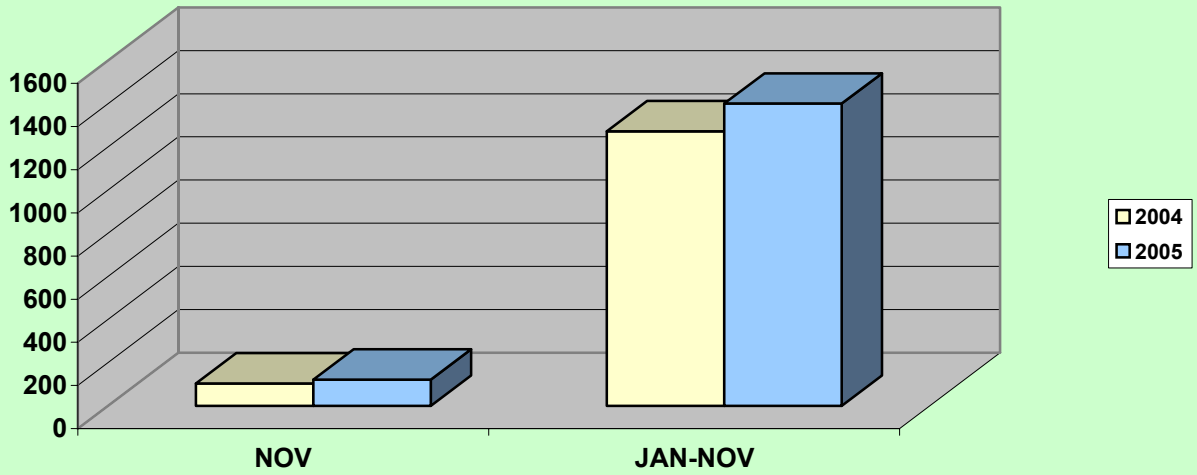
TOURISM STATISTICS

	2004 NOV	2005 NOV 1/	% CHNG	2004 JAN-NOV	2005 JAN-NOV 1/	% CHNG
TOTAL STOP-OVERS	97084	121740	25.4	1278921	1313398	2.7
FOREIGN NAT. STOP-OVERS(# of)	92105	115002	24.9	1205838	1238597	2.7
Long Stay	87173	110932	27.3	1137459	1197428	5.3
Short Stay	4932	4070	-17.5	68379	41169	-39.8
NON-RES. JAMAICANS	4979	6738	35.3	73083	74801	2.4
CRUISE PASSENGERS	98704	110016	11.5	966022	1004756	4.0
TOTAL TOURISTS	195788	231756	18.4	2244943	2318154	3.3
ARMED FORCES	0	0	-	0	0	-
TOTAL VISITORS	195788	231756	18.4	2244943	2318154	3.3
AVG. LENGTH OF STAY	10.3	9.4	-8.5	9.7	9.7	-0.3
ESTM. EXPD. (US\$MN)	104.1	122.0	17.2	1272.0	1400.8	10.1
Avg. Est. Exp/per person/per day (US\$)						
Stop-Overs	98.0	100.7	2.8	97.4	107.1	10.0
A.forces/Cruise	88.9	88.0	-1.0	83.9	83.3	-0.8

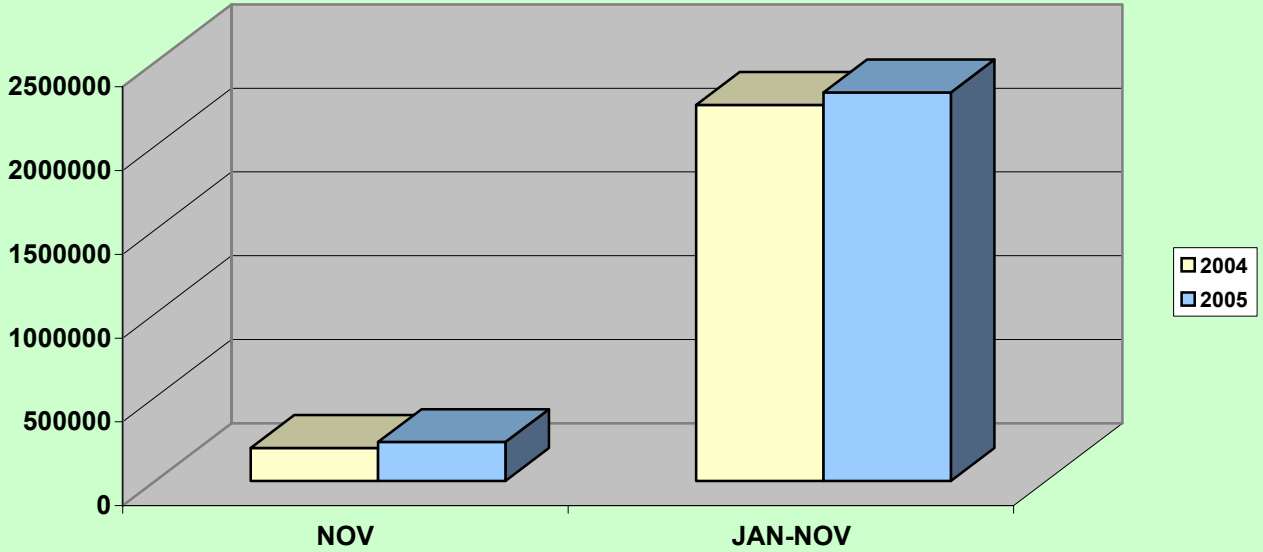
1/ Provisional

External Sector Statistics Unit
Economic Information & Publications Dept.
2006 February

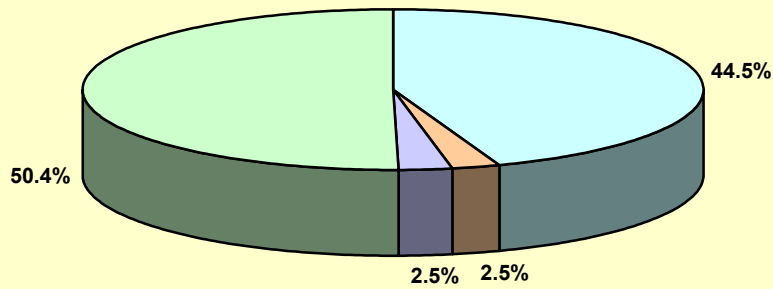
Estimated Tourist Expenditure (US\$m)



Jamaica: Total Visitors

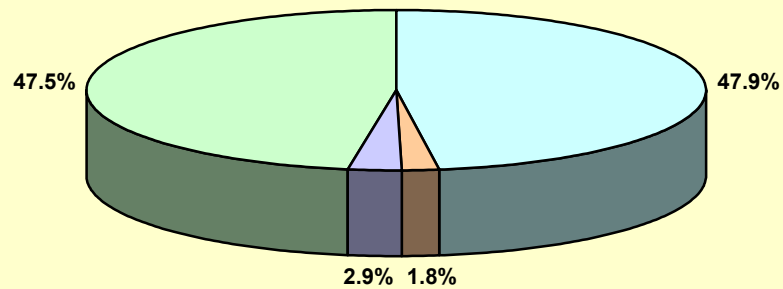


Composition of Visitors November 2004



For. Nat. Long Stay For. Nat. Short Stay Non-Res. Jamaicans Cruise Passengers

Composition of Visitors November 2005



For. Nat. Long Stay For. Nat. Short Stay Non-Res. Jamaicans Cruise Passengers

TOURISM STATISTICS

	2004/2005 APR-NOV	2005/2006 APR-NOV 1/	CHNG	% CHNG
TOTAL STOP-OVERS	912836	918429	5593	0.6
FOREIGN NAT. STOP-OVERS	855594	861556	5962	0.7
Long Stay	807511	833308	25797	3.2
Short Stay	48083	28248	-19835	-41.3
NON-RES. JAMAICANS	57242	56873	-369	-0.6
CRUISE PASSENGERS	596755	629783	33028	5.5
TOTAL TOURISTS	1509591	1548212	38621	2.6
ARMED FORCES	0	0	0	-
TOTAL VISITORS	1509591	1548212	38621	2.6
AVG.LENGTH.OF STAY	9.9	10.0	0.0	0.0
ESTM.EXPD.(US\$MN)	888.4	962.9	74.5	8.4
Avg. Est.Exp/per person/per day (US\$)				
Stop-Overs	92.8	102.9	10.1	10.8
A.forces/Cruise	87.2	86.4	-0.8	-0.9

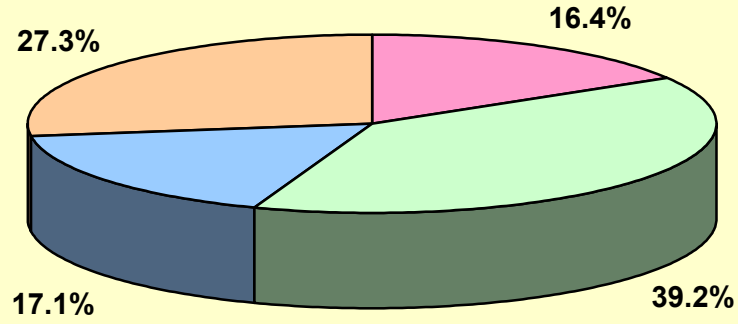
1/Provisional

*External Sector Statistics Unit
Economic Information & Publications Dept.*

SOURCES OF PRIVATE TRANSFERS								
(US\$Mn)								
	2004	2005			2004	2005		
	NOV	NOV 1/	CHNG	%CHNG	JAN - NOV	JAN-NOV 1/	CHNG	%CHNG
TOTAL INFLOWS	164.02	141.29	-22.73	-13.86	1516.45	1714.37	197.92	13.05
COMMERCIAL BANKS	26.92	32.92	6.00	22.30	311.27	419.28	108.00	34.70
REMITTANCE COMPS.	64.33	67.76	3.43	5.34	679.39	781.85	102.45	15.08
POST OFFICE	0.10	0.10	0.00	0.00	1.11	1.14	0.02	2.25
BUILDING SOCIETIES	27.98	24.83	-3.15	-11.26	306.53	279.36	-27.18	-8.87
OTHER	44.69	15.68	-29.01	-64.92	218.14	232.76	14.62	6.70

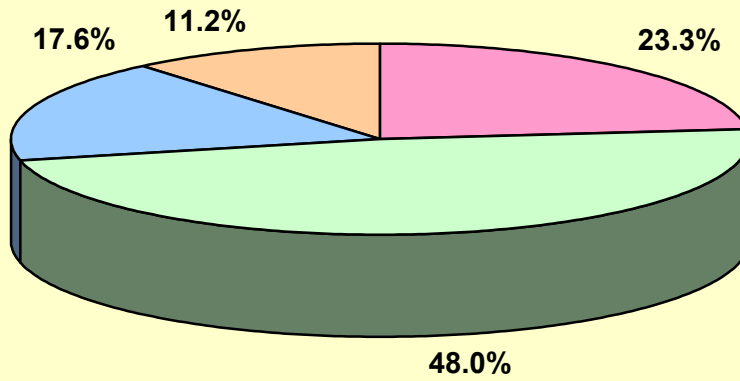
SOURCES OF PRIVATE TRANSFERS				
(US\$Mn)				
	2004/2005	2005/2006		
	APR - NOV	APR-NOV 1/	CHNG	%CHNG
TOTAL INFLOWS	1121.45	1208.02	86.57	7.72
COMMERCIAL BANKS	214.63	295.47	80.84	37.66
REMITTANCE COMPS.	504.46	580.70	76.24	15.11
POST OFFICE	0.81	0.82	0.01	1.23
BUILDING SOCIETIES	223.61	205.59	-18.02	-8.06
OTHER	177.94	125.44	-52.50	-29.50

Sources of Private Transfers (US\$m)
November 2004



Commercial Banks Remittance Companies Building Societies Other

Sources of Private Transfers (US\$m)
November 2005



Commercial Banks Remittance Companies Building Societies Other

Balance of Payments of Jamaica

US\$Mn.

	Jan-Nov 2004	Jan-Nov 1/ 2005	Change
1. Current Account	-518.5	-861.5	-343.0
A. Goods Balance	-1766.6	-2310.1	-543.5
Exports	1455.3	1494.4	39.1
Imports	3221.9	3804.5	582.6
B. Services Balance	486.8	602.3	115.5
Transportation	-139.2	-201.3	-62.1
Travel	1012.0	1177.3	165.3
Other Services	-386.0	-373.7	12.3
C. Income	-504.8	-538.8	-34.0
Compensation of employees	77.3	75.7	-1.6
Investment Income	-582.1	-614.5	-32.4
D. Current Transfers	1266.1	1385.1	119.0
Official	137.7	112.1	-25.6
Private	1128.4	1273.0	144.6
2. Capital & Financial Account	518.5	861.5	343.0
A. Capital Account	1.6	-10.3	-11.9
Capital Transfers	1.6	-10.3	-11.9
Official	12.6	0.3	-12.3
Private	-11.0	-10.6	0.4
Acq/dis. of non-produced non-fin. assets	0.0	0.0	0.0
B. Financial Account	516.9	871.8	354.9
Other Official Investment (incl. Govt. Reserves)	509.9	347.2	-162.7
Other Private Investment (incl. Errors & omissions)	658.1	759.9	101.8
Reserves	-651.1	-235.3	

1/Provisional

External Sector Statistics Unit

Economic Information & Publications Dept.

2006 February

Balance of Payments of Jamaica			
US\$Mn.			
	Jan-Nov 2004	Jan-Nov 1/ 2005	Change
Services (Net)	486.8	602.3	115.5
Inflows	2048.1	2175.1	127.0
Outflows	1561.3	1572.8	11.5
Transportation	-139.2	-201.3	-62.1
Inflows	444.0	441.0	-3.0
Outflows	583.2	642.3	59.1
Travel	1012.0	1177.3	165.3
Inflows	1272.0	1401.0	129.0
Outflows	260.0	223.7	-36.3
Other Services	-386.0	-373.7	12.3
Inflows	332.1	333.1	1.0
Outflows	718.1	706.8	-11.3
Income (Net)	-504.8	-538.8	-34.0
Compensation of Employees	77.3	75.7	-1.6
Inflows	123.0	129.0	6.0
Outflows	45.7	53.3	7.6
Investment Income	-582.1	-614.5	-32.4
Inflows	122.0	147.0	25.0
Outflows	704.1	761.5	57.4
- Bank of Jamaica	0.4	0.7	0.3
- Government Direct	252.7	310.3	57.6
- Government Guaranteed	1.5	1.9	0.4
- Private	0.0	0.0	0.0
- Direct Investment	323.1	322.4	-0.7
- Other	126.4	126.4	0.0
Current Transfers (Net)	1266.1	1385.1	119.0
Inflows	1657.4	1829.8	172.4
Outflows	391.3	444.7	53.4
Official	137.7	112.1	-25.6
Inflows	141.0	115.4	-25.6
Outflows	3.3	3.3	0.0
Private	1128.4	1273.0	144.6
Inflows	1516.4	1714.4	198.0
Outflows	388.0	441.4	53.4

	Balance of Payments of Jamaica US\$Mn.		
	Jan-Nov 2004	Jan-Nov 1/ 2005	Change
Capital & Financial Account (Net)	518.5	861.5	343.0
Capital Account (Net)	1.6	-10.3	-11.9
1. Capital Transfers	1.6	-10.3	-11.9
Official	12.6	0.3	-12.3
Inflows	12.6	0.3	-12.3
Outflows	0.0	0.0	0.0
Private	-11.0	-10.6	0.4
Inflows	19.8	20.2	0.4
Outflows	30.8	30.8	0.0
2. Acq/disp. of non-produced non-fin. assets	0.0	0.0	0.0
Inflows	0.0	0.0	0.0
Outflows	0.0	0.0	0.0
Financial Account (Net)	516.9	871.8	354.9
Other Official Investments (incl. Govt. Reserves)	509.9	347.2	-162.7
Inflows	957.6	1234.2	276.6
Outflows	447.7	887.0	439.3
Other Private Investments (incl.errors & omissions)	658.1	759.9	101.8
Inflows	2697.2	3073.0	375.8
Outflows	2039.1	2313.1	274.0
Reserves	-651.1	-235.3	

	Balance of Payments of Jamaica US\$Mn.			Balance of Payments of Jamaica US\$Mn.		
	Nov 2004	Nov 1/ 2005	Change	Apr-Nov 2004/05	Apr-Nov 1/ 2005/06	Change
1. Current Account	-128.9	-74.9	54.0	-484.1	-755.5	-271.4
A. Goods Balance	-230.1	-188.2	41.9	-1344.7	-1704.6	-359.9
Exports	131.1	146.0	14.9	1039.3	1117.5	78.2
Imports	361.2	334.2	-27.0	2384.0	2822.1	438.1
B. Services Balance	18.6	45.9	27.3	284.6	348.5	63.9
Transportation	-25.5	-20.3	5.2	-125.1	-171.8	-46.7
Travel	78.0	99.2	21.2	686.8	789.9	103.1
Other Services	-33.9	-33.0	0.9	-277.1	-269.6	7.5
C. Income	-52.4	-49.0	3.4	-356.5	-389.6	-33.1
Compensation of employees	14.0	10.8	-3.2	72.5	69.0	-3.5
Investment Income	-66.4	-59.8	6.6	-429.0	-458.6	-29.6
D. Current Transfers	135.0	116.4	-18.6	932.5	990.2	57.7
Official	21.4	9.1	-12.3	110.2	72.9	-37.3
Private	113.6	107.3	-6.3	822.3	917.3	95.0
2. Capital & Financial Account	128.9	74.9	-54.0	484.1	755.5	271.4
A. Capital Account	0.8	-0.4	-1.2	2.0	-7.3	-9.3
Capital Transfers	0.8	-0.4	-1.2	2.0	-7.3	-9.3
Official	1.2	0.0	-1.2	9.2	0.2	-9.0
Private	-0.4	-0.4	0.0	-7.2	-7.5	-0.3
Acq/dis. of non-produced non-fin. assets	0.0	0.0	0.0	0.0	0.0	0.0
B. Financial Account	128.1	75.3	-52.8	482.1	762.8	280.7
Other Official Investment (incl. Govt. Reserves)	-23.9	145.8	169.7	256.4	395.7	139.3
Other Private Investment (incl. Errors & omissions)	141.4	-55.7	-197.1	473.1	559.3	86.2
Reserves	10.6	-14.8	-25.4	-247.4	-192.2	

1/Provisional

External Sector Statistics Unit
Economic Information & Publications Dept.
2006 February

	Balance of Payments of Jamaica US\$Mn.			Balance of Payments of Jamaica US\$Mn.		
	Nov 2004	Nov 1/ 2005	Change	Apr-Nov 2004/05	Apr-Nov 1/ 2005/06	Change
Services (Net)	18.6	45.9	27.3	284.6	348.5	63.9
Inflows	172.1	195.2	23.1	1424.5	1496.1	71.6
Outflows	153.5	149.3	-4.2	1139.9	1147.6	7.7
Transportation	-25.5	-20.3	5.2	-125.1	-171.8	-46.7
Inflows	38.7	44.1	5.4	298.5	294.6	-3.9
Outflows	64.2	64.4	0.2	423.6	466.4	42.8
Travel	78.0	99.2	21.2	686.8	789.9	103.1
Inflows	104.1	122.0	17.9	888.4	963.0	74.6
Outflows	26.1	22.8	-3.3	201.6	173.1	-28.5
Other Services	-33.9	-33.0	0.9	-277.1	-269.6	7.5
Inflows	29.3	29.1	-0.2	237.6	238.5	0.9
Outflows	63.2	62.1	-1.1	514.7	508.1	-6.6
Income (Net)	-52.4	-49.0	3.4	-356.5	-389.6	-33.1
Compensation of Employees	14.0	10.8	-3.2	72.5	69.0	-3.5
Inflows	18.3	15.1	-3.2	106.7	107.6	0.9
Outflows	4.3	4.3	0.0	34.2	38.6	4.4
Investment Income	-66.4	-59.8	6.6	-429.0	-458.6	-29.6
Inflows	13.4	16.5	3.1	90.3	111.5	21.2
Outflows	79.8	76.3	-3.5	519.3	570.1	50.8
- Bank of Jamaica	0.0	0.0	0.0	0.2	0.5	0.3
- Government Direct	33.0	32.5	-0.5	199.7	229.0	29.3
- Government Guaranteed	0.2	0.2	0.0	1.2	1.6	0.5
- Private	0.0	0.0	0.0	0.0	0.0	0.0
- Direct Investment	35.0	32.1	-2.9	226.2	247.1	20.8
- Other	11.5	11.5	0.0	91.9	91.9	0.0
Current Transfers (Net)	135.0	116.4	-18.6	932.5	990.2	57.7
Inflows	185.7	150.7	-35.0	1234.0	1283.4	49.4
Outflows	50.7	34.3	-16.4	301.5	293.2	-8.3
Official	21.4	9.1	-12.3	110.2	72.9	-37.3
Inflows	21.7	9.4	-12.3	112.6	75.3	-37.3
Outflows	0.3	0.3	0.0	2.4	2.4	0.0
Private	113.6	107.3	-6.3	822.3	917.3	95.0
Inflows	164.0	141.3	-22.7	1121.4	1208.1	86.7
Outflows	50.4	34.0	-16.4	299.1	290.8	-8.3

	Balance of Payments of Jamaica US\$Mn.			Balance of Payments of Jamaica US\$Mn.		
	Nov 2004	Nov 1/ 2005	Change	Apr-Nov 2004/05	Apr-Nov 1/ 2005/06	Change
Capital & Financial Account (Net)	128.9	74.9	-54.0	484.1	755.5	271.4
Capital Account (Net)	0.8	-0.4	-1.2	2.0	-7.3	-9.3
1. Capital Transfers	0.8	-0.4	-1.2	2.0	-7.3	-9.3
Official	1.2	0.0	-1.2	9.2	0.2	-9.0
Inflows	1.2	0.0	-1.2	9.2	0.2	-9.0
Outflows	0.0	0.0	0.0	0.0	0.0	0.0
Private	-0.4	-0.4	0.0	-7.2	-7.5	-0.3
Inflows	2.4	2.4	0.0	15.2	14.9	-0.3
Outflows	2.8	2.8	0.0	22.4	22.4	0.0
2. Acq/disp. of non-produced non-fin. assets	0.0	0.0	0.0	0.0	0.0	0.0
Inflows	0.0	0.0	0.0	0.0	0.0	0.0
Outflows	0.0	0.0	0.0	0.0	0.0	0.0
Financial Account (Net)	128.1	75.3	-52.8	482.1	762.8	280.7
Other Official Investments (incl. Govt. Reserves)	-23.9	145.8	169.7	256.4	395.7	139.3
Inflows	3.5	165.9	162.4	645.0	1225.8	580.8
Outflows	27.4	20.1	-7.3	388.6	830.1	441.5
Other Private Investments (incl.errors & omissions)	141.4	-55.7	-197.1	473.1	559.3	86.2
Inflows	313.2	146.5	-166.7	1961.9	2348.8	386.9
Outflows	171.8	202.2	30.4	1488.8	1789.5	300.7
Reserves	10.6	-14.8	-25.4	-247.4	-192.2	

**BALANCE OF PAYMENTS OF JAMAICA
US\$MN**

	Sep			Oct			Jan-Oct			Nov			Jan-Nov		
	2004	Sep 1/ 2005	Change	2004	Oct 1/ 2005	Change	2004	Jan-Oct 1/ 2005	Change	2004	Nov 1/ 2005	Change	2004	Jan-Nov 1/ 2005	Change
1. Current Account	-75.3	-101.4	-26.1	-71.4	-98.5	-27.1	-389.6	-786.6	-397.0	-128.9	-74.9	54.0	-518.5	-861.5	-343.0
A. Goods Balance	-158.5	-208.8	-50.3	-189.5	-204.6	-15.1	-1536.5	-2121.9	-585.4	-230.1	-188.2	41.9	-1766.6	-2310.1	-543.5
Exports	89.2	141.8	52.6	120.9	118.7	-2.2	1324.2	1348.4	24.2	131.1	146.0	14.9	1455.3	1494.4	39.1
Imports	247.7	350.6	102.9	310.4	323.3	12.9	2860.7	3470.3	609.6	361.2	334.2	-27.0	3221.9	3804.5	582.6
B. Services Balance	-22.6	2.9	25.5	5.2	14.2	9.0	468.2	556.4	88.2	18.6	45.9	27.3	486.8	602.3	115.5
Transportation	-18.7	-28.0	-9.3	-21.9	-22.3	-0.4	-113.7	-181.0	-67.3	-25.5	-20.3	5.2	-139.2	-201.3	-62.1
Travel	17.2	56.2	39.0	58.9	66.5	7.6	934.0	1078.1	144.1	78.0	99.2	21.2	1012.0	1177.3	165.3
Other Services	-21.1	-25.3	-4.2	-31.8	-30.0	1.8	-352.1	-340.7	11.4	-33.9	-33.0	0.9	-386.0	-373.7	12.3
C. Income	-17.0	-26.0	-9.0	-19.6	-30.3	-10.7	-452.4	-489.8	-37.4	-52.4	-49.0	3.4	-504.8	-538.8	-34.0
Compensation of employees	10.1	13.2	3.1	15.4	14.8	-0.6	63.3	64.9	1.6	14.0	10.8	-3.2	77.3	75.7	-1.6
Investment Income	-27.1	-39.2	-12.1	-35.0	-45.1	-10.1	-515.7	-554.7	-39.0	-66.4	-59.8	6.6	-582.1	-614.5	-32.4
D. Current Transfers	122.8	130.5	7.7	132.5	122.2	-10.3	1131.1	1268.7	137.6	135.0	116.4	-18.6	1266.1	1385.1	119.0
General Government	21.2	8.1	-13.1	21.0	8.0	-13.0	116.3	103.0	-13.3	21.4	9.1	-12.3	137.7	112.1	-25.6
Other Sector	101.6	122.4	20.8	111.5	114.2	2.7	1014.8	1165.7	150.9	113.6	107.3	-6.3	1128.4	1273.0	144.6
2. Capital & Financial Account	75.3	101.4	26.1	71.4	98.5	27.1	389.6	786.6	397.0	128.9	74.9	-54.0	518.5	861.5	343.0
A. Capital Account	-0.2	-0.9	-0.7	0.2	-1.0	-1.2	0.8	-9.9	-10.7	0.8	-0.4	-1.2	1.6	-10.3	-11.9
Capital Transfers	-0.2	-0.9	-0.7	0.2	-1.0	-1.2	0.8	-9.9	-10.7	0.8	-0.4	-1.2	1.6	-10.3	-11.9
General Government	1.1	0.0	-1.1	1.1	0.0	-1.1	11.4	0.3	-11.1	1.2	0.0	-1.2	12.6	0.3	-12.3
Other Sector	-1.3	-0.9	0.4	-0.9	-1.0	-0.1	-10.6	-10.2	0.4	-0.4	-0.4	0.0	-11.0	-10.6	0.4
Acq/disp. of non-produced non-fin. assets	0.0	0.0	0.0	0.0	0.0	0.0	0.0	0.0	0.0	0.0	0.0	0.0	0.0	0.0	0.0
B. Financial Account	75.5	102.3	26.8	71.2	99.5	28.3	388.8	796.5	407.7	128.1	75.3	-52.8	516.9	871.8	354.9
Other Official Investment (incl. Govt. Reserves)	-23.0	-28.0	-5.0	173.5	104.6	-68.9	533.8	201.4	-332.4	-23.9	145.8	169.7	509.9	347.2	-162.7
Other Private Investment (incl. errors & omissions)	71.6	131.8	60.2	107.8	-45.1	-152.9	516.7	815.6	298.9	141.4	-55.7	-197.1	658.1	759.9	101.8
Reserves	26.9	-1.5		-210.1	40.0		-661.7	-220.5		10.6	-14.8		-651.1	-235.3	

1/Provisional

BALANCE OF PAYMENTS OF JAMAICA

US\$MN

	Sep 2004/05	Sep 1/ 2005/06	Change	Oct 2004/05	Oct 1/ 2005/06	Change	Apr-Oct 2004/05	Apr-Oct 1/ 2005/06	Change	Nov 2004/05	Nov 1/ 2005/06	Change	Apr-Nov 2004/05	Apr-Nov 1/ 2005/06	Change
1. Current Account	-75.3	-101.4	-26.1	-71.4	-98.5	-27.1	-355.2	-680.6	-325.4	-128.9	-74.9	54.0	-484.1	-755.5	-271.4
A. Goods Balance	-158.5	-208.8	-50.3	-189.5	-204.6	-15.1	-1114.6	-1516.4	-401.8	-230.1	-188.2	41.9	-1344.7	-1704.6	-359.9
Exports	89.2	141.8	52.6	120.9	118.7	-2.2	908.2	971.5	63.3	131.1	146.0	14.9	1039.3	1117.5	78.2
Imports	247.7	350.6	102.9	310.4	323.3	12.9	2022.8	2487.9	465.1	361.2	334.2	-27.0	2384.0	2822.1	438.1
B. Services Balance	-22.6	2.9	25.5	5.2	14.2	9.0	266.0	302.6	36.6	18.6	45.9	27.3	284.6	348.5	63.9
Transportation	-18.7	-28.0	-9.3	-21.9	-22.3	-0.4	-99.6	-151.5	-51.9	-25.5	-20.3	5.2	-125.1	-171.8	-46.7
Travel	17.2	56.2	39.0	58.9	66.5	7.6	608.8	690.7	81.9	78.0	99.2	21.2	686.8	789.9	103.1
Other Services	-21.1	-25.3	-4.2	-31.8	-30.0	1.8	-243.2	-236.6	6.6	-33.9	-33.0	0.9	-277.1	-269.6	7.5
C. Income	-17.0	-26.0	-9.0	-19.6	-30.3	-10.7	-304.1	-340.6	-36.5	-52.4	-49.0	3.4	-356.5	-389.6	-33.1
Compensation of employees	10.1	13.2	3.1	15.4	14.8	-0.6	58.5	58.2	-0.3	14.0	10.8	-3.2	72.5	69.0	-3.5
Investment Income	-27.1	-39.2	-12.1	-35.0	-45.1	-10.1	-362.6	-398.8	-36.2	-66.4	-59.8	6.6	-429.0	-458.6	-29.6
D. Current Transfers	122.8	130.5	7.7	132.5	122.2	-10.3	797.5	873.8	76.3	135.0	116.4	-18.6	932.5	990.2	57.7
General Government	21.2	8.1	-13.1	21.0	8.0	-13.0	88.8	63.8	-25.0	21.4	9.1	-12.3	110.2	72.9	-37.3
Other Sector	101.6	122.4	20.8	111.5	114.2	2.7	708.7	810.0	101.3	113.6	107.3	-6.3	822.3	917.3	95.0
2. Capital & Financial Account	75.3	101.4	26.1	71.4	98.5	27.1	355.2	680.6	325.4	128.9	74.9	-54.0	484.1	755.5	271.4
A. Capital Account	-0.2	-0.9	-0.7	0.2	-1.0	-1.2	1.2	-6.9	-8.1	0.8	-0.4	-1.2	2.0	-7.3	-9.3
Capital Transfers	-0.2	-0.9	-0.7	0.2	-1.0	-1.2	1.2	-6.9	-8.1	0.8	-0.4	-1.2	2.0	-7.3	-9.3
General Government	1.1	0.0	-1.1	1.1	0.0	-1.1	8.0	0.2	-7.8	1.2	0.0	-1.2	9.2	0.2	-9.0
Other Sector	-1.3	-0.9	0.4	-0.9	-1.0	-0.1	-6.8	-7.1	-0.3	-0.4	-0.4	0.0	-7.2	-7.5	-0.3
Acq/dis. of non-produced non-fin. assets	0.0	0.0	0.0	0.0	0.0	0.0	0.0	0.0	0.0	0.0	0.0	0.0	0.0	0.0	0.0
B. Financial Account	75.5	102.3	26.8	71.2	99.5	28.3	354.0	687.5	333.5	128.1	75.3	-52.8	482.1	762.8	280.7
Other Official Investment (incl. Govt. Reserves)	-23.0	-28.0	-5.0	173.5	104.6	-68.9	280.3	249.9	-30.4	-23.9	145.8	169.7	256.4	395.7	139.3
Other Private Investment (incl. errors & omissions)	71.6	131.8	60.2	107.8	-45.1	-152.9	331.7	615.0	283.3	141.4	-55.7	-197.1	473.1	559.3	86.2
Reserves	26.9	-1.5		-210.1	40.0		-258.0	-177.4		10.6	-14.8		-247.4	-192.2	

1/Provisional

BALANCE OF PAYMENTS OF JAMAICA						
US\$MN						
	Jan-Dec	Jan-Dec	Jan-Dec	Jan-Dec	Jan-Dec	Jan-Dec
	1999	2000	2001	2002	2003	2004
1. Current Account	-216.3	-367.4	-757.3	-1074.4	-772.6	-509.4
A. Goods Balance	-1186.5	-1441.5	-1618.2	-1870.5	-1942.6	-1944.5
Exports	1499.1	1562.8	1454.4	1309.1	1385.6	1601.6
Imports	2685.6	3004.3	3072.6	3179.6	3328.2	3546.1
B. Services Balance	655.4	603.2	383.1	314.7	552.3	571.7
Transportation	-233.6	-256.6	-256.2	-245.6	-143.6	-150.3
Travel	1052.4	1123.9	1026.2	950.3	1102.7	1151.5
Other Services	-163.4	-264.1	-386.9	-390.0	-406.7	-429.5
C. Income	-332.5	-349.9	-437.8	-605.5	-571.4	-582.7
Compensation of employees	70.3	67.4	74.6	82.1	70.7	84.5
Investment Income	-402.8	-417.3	-512.4	-687.6	-642.1	-667.2
D. Current Transfers	647.3	820.8	915.6	1086.9	1189.1	1446.1
General Government	45.8	147.9	119.7	107.6	105.2	159.9
Other Sector	601.5	672.9	795.9	979.3	1083.9	1286.2
2. Capital & Financial Account	216.3	367.4	757.3	1074.4	772.6	509.4
A. Capital Account	13.1	2.2	-23.6	-16.9	0.1	2.2
Capital Transfers	13.1	2.2	-23.6	-16.9	-0.3	2.2
General Government	4.1	15.6	2.2	0.2	0.1	13.8
Other Sector	9.0	-13.4	-25.8	-17.1	-0.4	-11.6
B. Financial Account	203.2	365.2	780.9	1091.3	772.5	507.2
Other Official Investment (incl. Govt. Reserves)	-331.4	383.7	653.4	77.1	-362.5	479.2
Other Private Investment (incl. errors & omissions)	402.8	500.8	998.8	770.5	702.9	721.6
Reserves	131.8	-519.3	-871.3	243.7	432.1	-693.6

BALANCE OF PAYMENTS OF JAMAICA						
US\$MN						
	Apr-Mar	Apr-Mar	Apr-Mar	Apr-Mar	Apr-Mar	Apr-Mar 1/
	1999/00	2000/01	2001/02	2002/03	2003/04	2004/05
1. Current Account	-304.1	-497.2	-753.2	-1161.9	-561.9	-581.0
A. Goods Balance	-1251.9	-1541.7	-1577.3	-2025.8	-1832.0	-2128.1
Exports	1557.7	1517.7	1423.7	1313.6	1467.4	1562.5
Imports	2809.6	3059.4	3001.0	3339.4	3299.3	3690.6
B. Services Balance	622.4	592.7	323.2	367.8	596.5	623.3
Transportation	-244.1	-253.6	-253.7	-226.6	-128.0	-165.7
Travel	1058.3	1149.6	955.6	985.7	1144.6	1213.7
Other Services	-191.8	-303.3	-378.7	-391.3	-420.1	-424.7
C. Income	-369.5	-382.4	-457.6	-613.0	-565.8	-583.6
Compensation of employees	67.7	67.4	73.4	82.8	71.9	86.4
Investment Income	-437.2	-449.8	-531.0	-695.8	-637.6	-670.0
D. Current Transfers	694.9	834.2	958.5	1109.1	1239.4	1507.4
General Government	70.4	141.5	116.5	108.7	106.3	171.6
Other Sector	624.5	692.7	842.0	1000.4	1133.1	1335.8
2. Capital & Financial Account	304.1	497.2	753.2	1161.9	561.9	581.0
A. Capital Account	12.5	-6.7	-24.2	-12.1	0.5	-0.4
Capital Transfers	12.5	-6.7	-24.2	-12.1	0.1	-0.4
General Government	9.0	10.2	0.4	0.2	3.5	10.5
Other Sector	3.5	-16.9	-24.6	-12.3	-3.4	-10.9
B. Financial Account	291.6	503.9	777.4	1174.0	561.4	581.4
Other Official Investment (incl. Govt. Reserves)	-123.2	342.0	591.2	-223.3	142.0	177.2
Other Private Investment (incl. errors & omissions)	536.8	744.7	841.6	795.4	648.3	737.2
Reserves	-122.0	-582.8	-655.4	601.9	-228.9	-333.0
1/Provisional						