



# THE BALANCE OF PAYMENTS

## STATISTICAL UPDATE

May 2004

**External Sector Statistics Unit**  
Economic Information & Publications Department  
RESEARCH AND ECONOMIC PROGRAMMING DIVISION

BANK OF JAMAICA  
P.O. Box 621  
Kingston, Jamaica

## TABLE OF CONTENTS

	<b>Pages</b>
External Trade .....	1
Exports.....	7
Garments.....	8
Bauxite.....	10
Selected Non -Traditionals.....	12
Tourism .....	13
Private Transfer flows.....	17
B. O. P. Reports.....	19

**EXTERNAL TRADE US\$000**

	MAY 1/ 2004	MAY2/ 2005	CHANGE	%CHANGE	JAN-MAY 1/ 2004	JAN-MAY 2/ 2005	CHANGE	%CHANGE
<b>TOTAL GOODS EXPORTS(F.O.B)</b>	139033	140096	1063	0.8	710444	675678	-34766	-4.9
<b>TOTAL GOODS IMPORTS(C.I.F)</b>	337754	344197	6443	1.9	1612386	1853400	241014	14.9
<b>TRADE BALANCE</b>	-198721	-204101	-5380	-2.7	-901942	-1177722	-275780	-30.6

**VALUE OF TOTAL GOODS EXPORTS US\$000**

	MAY 2004	MAY 2005	CHANGE	%CHANGE	JAN-MAY 2004	JAN-MAY 2005	CHANGE	%CHANGE
0.FOOD	31470	23532	-7938	-25.2	140593	122178	-18415	-13.1
1.BEVER. & TOBAC	4434	6315	1881	42.4	23118	30839	7721	33.4
2.CRUDE MATS	71375	80196	8821	12.4	406345	414587	8242	2.0
3.MINERAL FUELS	7603	4976	-2627	-34.6	14532	10500	-4032	-27.7
4.ANI.& VEG OILS	6	0	-6	-100.0	20	33	13	65.0
5.CHEMICALS	5351	6844	1493	27.9	30712	26334	-4378	-14.3
6.MANUF. GOODS	945	589	-356	-37.7	7902	3962	-3940	-49.9
7.MACH.& TRANSP.	1268	1732	464	36.6	12171	7225	-4946	-40.6
8.MISC. MANUF	1678	1754	76	4.5	9021	7754	-1267	-14.0
9.MISC. COMMDS.	0	0	0	-	0	0	0	-
<b>GENERAL MERCHANDISE EXPS.</b>	<b>124130</b>	<b>125938</b>	<b>1808</b>	<b>1.5</b>	<b>644414</b>	<b>623412</b>	<b>-21002</b>	<b>-3.3</b>
FREEZONE EXPORTS	9044	8299	-745	-8.2	36733	22969	-13764	-37.5
GOODS PROCURED IN PORTS	5859	5859	0	0.0	29297	29297	0	0.0
<b>TOTAL GOODS EXPORTS</b>	<b>139033</b>	<b>140096</b>	<b>1063</b>	<b>0.8</b>	<b>710444</b>	<b>675678</b>	<b>-34766</b>	<b>-4.9</b>

**TRADITIONAL & NON-TRADITIONAL EXPORTS US\$000**

	MAY 2004	MAY 2005	CHANGE	%CHANGE	JAN-MAY 2004	JAN-MAY 2005	CHANGE	%CHANGE
<b>MAJOR TRAD. EXPORT</b>	<b>88038</b>	<b>90009</b>	<b>1971</b>	<b>2.2</b>	<b>469901</b>	<b>476979</b>	<b>7078</b>	<b>1.5</b>
BAUXITE	8037	6599	-1438	-17.9	42283	39110	-3173	-7.5
ALUMINA	59904	69627	9723	16.2	344483	364087	19604	5.7
SUGAR	18636	12978	-5658	-30.4	75653	72977	-2676	-3.5
BANANAS	1461	805	-656	-44.9	7482	805	-6677	-89.2
<b>OTHER TRAD. EXPORT</b>	<b>5270</b>	<b>5725</b>	<b>455</b>	<b>8.6</b>	<b>28129</b>	<b>26713</b>	<b>-1416</b>	<b>-5.0</b>
CITRUS	90	166	76	84.4	1630	1213	-417	-25.6
COCOA	283	54	-229	-80.9	1044	620	-424	-40.6
COFFEE	3321	2266	-1055	-31.8	13476	9111	-4365	-32.4
PIMENTO	0	208	208	-	581	972	391	67.3
RUM	1530	2971	1441	94.2	10768	13867	3099	28.8
GYPSUM	46	60	14	30.4	630	930	300	47.6
<b>NON-TRAD. EXPORTS</b>	<b>28427</b>	<b>28101</b>	<b>-326</b>	<b>-1.1</b>	<b>126072</b>	<b>108280</b>	<b>-17792</b>	<b>-14.1</b>
RE-EXPORTS	2395	2103	-292	-12.2	20312	11440	-8872	-43.7
<b>GENERAL MERCHANDISE EXPS.</b>	<b>124130</b>	<b>125938</b>	<b>1808</b>	<b>1.5</b>	<b>644414</b>	<b>623412</b>	<b>-21002</b>	<b>-3.3</b>
FREEZONE EXPORTS	9044	8299	-745	-8.2	36733	22969	-13764	-37.5
GOODS PROCURED IN PORTS	5859	5859	0	0.0	29297	29297	0	0.0
<b>TOTAL GOODS EXPORTS</b>	<b>139033</b>	<b>140096</b>	<b>1063</b>	<b>0.8</b>	<b>710444</b>	<b>675678</b>	<b>-34766</b>	<b>-4.9</b>

**VALUE OF GOODS IMPORTS BY S.I.T.C. US\$000**

	<b>MAY 2004</b>	<b>MAY 2005</b>	<b>CHANGE</b>	<b>%CHANGE</b>	<b>JAN-MAY 2004</b>	<b>JAN-MAY 2005</b>	<b>CHANGE</b>	<b>%CHANGE</b>
0.FOOD	41390	45554	4164	10.1	207211	242899	35688	17.2
1.BEV. & TOBAC	4070	4733	663	16.3	18033	22651	4618	25.6
2.CRUDE MATS.	5132	7425	2293	44.7	26423	39539	13116	49.6
3.MIN.FUEL	100437	96704	-3733	-3.7	395032	453561	58529	14.8
4.ANI & VEG OIL	3980	1120	-2860	-71.9	15291	12397	-2894	-18.9
5.CHEMICAL	28748	29399	651	2.3	166095	202660	36565	22.0
6.MANUF. GOOD	37732	47648	9916	26.3	192668	270329	77661	40.3
7.MACH.& TRANSP	66807	58061	-8746	-13.1	337626	343666	6040	1.8
8.MISC.MAN.GOOD	26579	37885	11306	42.5	156297	186243	29946	19.2
9.MISC. COMMDS.	4615	5578	963	20.9	25840	24964	-876	-3.4
<b>GENERAL MERCHANDISE IMPORTS</b>	<b>319490</b>	<b>334107</b>	<b>14617</b>	<b>4.6</b>	<b>1540516</b>	<b>1798909</b>	<b>258393</b>	<b>16.8</b>
FREEZONE IMPORTS	8906	732	-8174	-91.8	25080	7701	-17379	-69.3
GOODS PROCURED IN PORTS	9358	9358	0	0.0	46790	46790	0	0.0
<b>TOTAL GOODS IMPORTS</b>	<b>337754</b>	<b>344197</b>	<b>6443</b>	<b>1.9</b>	<b>1612386</b>	<b>1853400</b>	<b>241014</b>	<b>14.9</b>

**MAJOR TRADITIONALS (VOLUME, VALUE, PRICE)**

	<b>MAY</b>	<b>MAY</b>	<b>CHANGE</b>	<b>%CHANGE</b>	<b>JAN-MAY</b>	<b>JAN-MAY</b>	<b>CHANGE</b>	<b>%CHANGE</b>
	<b>2004</b>	<b>2005</b>			<b>2004</b>	<b>2005</b>		
<b>BAUXITE</b>								
Volume ('000 tonnes)	338.0	271.1	-66.8	-19.8	1750.6	1606.8	-143.8	-8.2
<b>Value (U.S. \$000)</b>	<b>8037.0</b>	<b>6599.0</b>	<b>-1438.0</b>	<b>-17.9</b>	<b>42283.0</b>	<b>39110.0</b>	<b>-3173.0</b>	<b>-7.5</b>
Price (US \$/tonne)	23.8	24.3	0.6	2.4	24.2	24.3	0.2	0.8
<b>ALUMINA</b>								
Volume ('000 tonnes)	297.3	332.3	35.0	11.8	1733.2	1734.6	1.4	0.1
<b>Value (U.S. \$000)</b>	<b>59904.0</b>	<b>69627.0</b>	<b>9723.0</b>	<b>16.2</b>	<b>344483.0</b>	<b>364087.0</b>	<b>19604.0</b>	<b>5.7</b>
Price (US \$/tonne)	201.5	209.5	8.1	4.0	198.8	209.9	11.1	5.6
<b>SUGAR</b>								
Volume ('000 tonnes)	31.8	20.0	-11.8	-37.2	121.6	106.9	-14.7	-12.1
<b>Value (U.S. \$000)</b>	<b>18636.0</b>	<b>12978.0</b>	<b>-5658.0</b>	<b>-30.4</b>	<b>75653.0</b>	<b>72977.0</b>	<b>-2676.0</b>	<b>-3.5</b>
Price (US \$/tonne)	586.0	649.6	63.6	10.9	622.4	682.7	60.3	9.7
<b>BANANAS</b>								
Volume ('000 tonnes)	3.3	1.8	-1.5	-46.2	16.1	1.8	-14.3	-88.9
<b>Value (U.S. \$000)</b>	<b>1461.0</b>	<b>805.0</b>	<b>-656.0</b>	<b>-44.9</b>	<b>7482.0</b>	<b>805.0</b>	<b>-6677.0</b>	<b>-89.2</b>
Price (US \$/tonne)	440.5	0.0	-440.5	-100.0	464.3	0.0	-464.3	-100.0

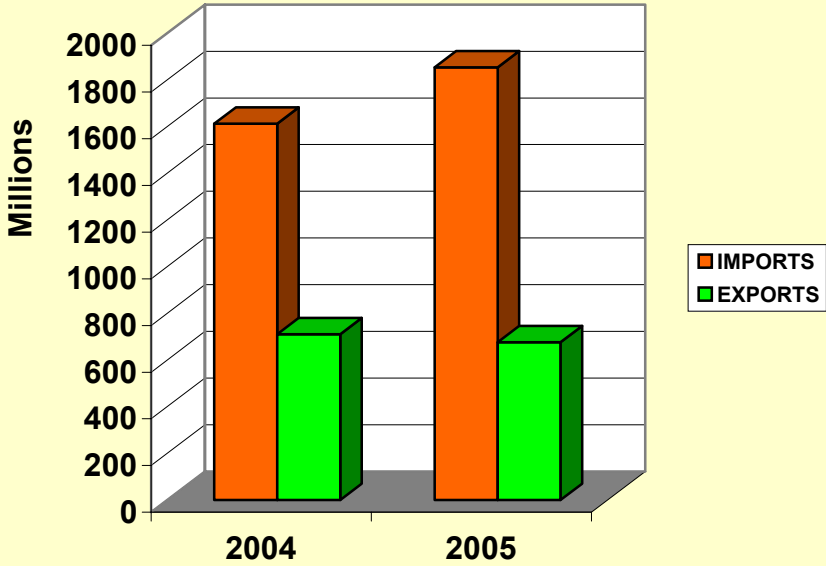
1/REVISED

2/PROVISIONAL

External Sector Statistics Unit.

August 16, 2005

**VALUE OF IMPORTS & EXPORT US\$Mn**  
JAN - MAY



## EXTERNAL TRADE US\$000

	MAY 1/ 2004/2005	MAY 2/ 2005/2006	CHANGE	%CHANGE	APR-MAY 1/ 2004/2005	APR-MAY 2/ 2005/2006	CHANGE	%CHANGE
TOTAL GOODS EXPORTS(F.O.B)	139033	140096	1063	0.8	294476	304171	9695	3.3
TOTAL GOODS IMPORTS(C.I.F)	337754	344197	6443	1.9	643479	762848	119369	18.6
TRADE BALANCE	-198721	-204101	-5380	-2.7	-349003	-458677	-109674	-31.4

## VALUE OF TOTAL GOODS EXPORTS US\$000

	MAY 2004/2005	MAY 2005/2006	MAY CHANGE	%CHANGE	APR-MAY 2004/2005	APR-MAY 2005/2006	CHANGE	%CHANGE
O.FOOD	31470	23532	-7938	-25.2	58517	63179	4662	8.0
1.BEVER. & TOBAC	4434	6315	1881	42.4	9999	12658	2659	26.6
2.CRUDE MATS	71375	80196	8821	12.4	174448	182948	8500	4.9
3.MINERAL FUELS	7603	4976	-2627	-34.6	7850	5348	-2502	-31.9
4.ANI.& VEG OILS	6	0	-6	-100.0	8	8	0	0.0
5.CHEMICALS	5351	6844	1493	27.9	9261	8529	-732	-7.9
6.MANUF. GOODS	945	589	-356	-37.7	1782	1475	-307	-17.2
7.MACH.& TRANSP.	1268	1732	464	36.6	3003	2752	-251	-8.4
8.MISC. MANUF	1678	1754	76	4.5	3595	3335	-260	-7.2
9.MISC. COMMDS.	0	0	0	-	0	0	0	-
GENERAL MERCHANDISE EXPS.	124130	125938	1808	1.5	268463	280232	11769	4.4
FREEZONE EXPORTS	9044	8299	-745	-8.2	14294	12220	-2074	-14.5
GOODS PROCURED IN PORTS	5859	5859	0	0.0	11719	11719	0	0.0
TOTAL GOODS EXPORTS	139033	140096	1063	0.8	294476	304171	9695	3.3

## TRADITIONAL &amp; NON-TRADITIONAL EXPORTS US\$000

	MAY 2004/2005	MAY 2005/2006	MAY CHANGE	%CHANGE	APR-MAY 2004/2005	APR-MAY 2005/2006	CHANGE	%CHANGE
MAJOR TRAD. EXPORT	88038	90009	1971	2.2	198469	218515	20046	10.1
BAUXITE	8037	6599	-1438	-17.9	18161	13354	-4807	-26.5
ALUMINA	59904	69627	9723	16.2	144361	162809	18448	12.8
SUGAR	18636	12978	-5658	-30.4	33107	41547	8440	25.5
BANANAS	1461	805	-656	-44.9	2840	805	-2035	-71.7
OTHER TRAD. EXPORT	5270	5725	455	8.6	11096	11603	507	4.6
CITRUS	90	166	76	84.4	371	234	-137	-36.9
COCOA	283	54	-229	-80.9	737	189	-548	-74.4
COFFEE	3321	2266	-1055	-31.8	5684	4657	-1027	-18.1
PIMENTO	0	208	208	-	11	599	588	5345.5
RUM	1530	2971	1441	94.2	4088	5542	1454	35.6
GYPSUM	46	60	14	30.4	205	382	177	86.3
NON-TRAD. EXPORTS	28427	28101	-326	-1.1	53985	45935	-8050	-14.9
RE-EXPORTS	2395	2103	-292	-12.2	4913	4179	-734	-14.9
GENERAL MERCHANDISE EXPS.	124130	125938	1808	1.5	268463	280232	11769	4.4
FREEZONE EXPORTS	9044	8299	-745	-8.2	14294	12220	-2074	-14.5
GOODS PROCURED IN PORTS	5859	5859	0	0.0	11719	11719	0	0.0
TOTAL GOODS EXPORTS	139033	140096	1063	0.8	294476	304171	9695	3.3

**VALUE OF GOODS IMPORTS BY S.I.T.C. US\$000**

	<b>MAY</b>	<b>MAY</b>	<b>CHANGE</b>	<b>%CHANGE</b>	<b>APR-MAY</b>	<b>APR-MAY</b>	<b>CHANGE</b>	<b>%CHANGE</b>
	<b>2004/2005</b>	<b>2005/2006</b>			<b>2004/2005</b>	<b>2005/2006</b>		
0.FOOD	41390	45554	4164	10.1	73981	103130	29149	39.4
1.BEV. & TOBAC	4070	4733	663	16.3	7119	9922	2803	39.4
2.CRUDE MATS.	5132	7425	2293	44.7	11965	18715	6750	56.4
3.MIN.FUEL	100437	96704	-3733	-3.7	170536	185780	15244	8.9
4.ANI & VEG OIL	3980	1120	-2860	-71.9	8023	4340	-3683	-45.9
5.CHEMICAL	28748	29399	651	2.3	55204	79042	23838	43.2
6.MANUF. GOOD	37732	47648	9916	26.3	81102	110620	29518	36.4
7.MACH. & TRANSP	66807	58061	-8746	-13.1	134379	139651	5272	3.9
8.MISC.MAN.GOOD	26579	37885	11306	42.5	56643	79518	22875	40.4
9.MISC. COMMDS.	4615	5578	963	20.9	11071	10415	-656	-5.9
<b>GENERAL MERCHANDISE IMPORTS</b>	<b>319490</b>	<b>334107</b>	<b>14617</b>	<b>4.6</b>	<b>610023</b>	<b>741133</b>	<b>131110</b>	<b>21.5</b>
FREEZONE IMPORTS	8906	732	-8174	-91.8	14740	2999	-11741	-79.7
GOODS PROCURED IN PORTS	9358	9358	0	0.0	18716	18716	0	0.0
<b>TOTAL GOODS IMPORTS</b>	<b>337754</b>	<b>344197</b>	<b>6443</b>	<b>1.9</b>	<b>643479</b>	<b>762848</b>	<b>119369</b>	<b>18.6</b>

**MAJOR TRADITIONALS (VOLUME, VALUE, PRICE)**

	<b>MAY</b>	<b>MAY</b>	<b>CHANGE</b>	<b>%CHANGE</b>	<b>APR-MAY</b>	<b>APR-MAY</b>	<b>CHANGE</b>	<b>%CHANGE</b>
	<b>2004/2005</b>	<b>2005/2006</b>			<b>2004/2005</b>	<b>2005/2006</b>		
<b>BAUXITE</b>								
Volume ('000 tonnes)	338.0	271.1	-66.8	-19.8	763.7	548.6	-215.1	-28.2
<b>Value (U.S. \$000)</b>	<b>8037.0</b>	<b>6599.0</b>	<b>-1438.0</b>	<b>-17.9</b>	<b>18161.0</b>	<b>13354.0</b>	<b>-4807.0</b>	<b>-26.5</b>
Price (US \$/tonne)	23.8	24.3	0.6	2.4	23.8	24.3	0.6	2.4
<b>ALUMINA</b>								
Volume ('000 tonnes)	297.3	332.3	35.0	11.8	716.6	777.0	60.4	8.4
<b>Value (U.S. \$000)</b>	<b>59904.0</b>	<b>69627.0</b>	<b>9723.0</b>	<b>16.2</b>	<b>144361.0</b>	<b>162809.0</b>	<b>18448.0</b>	<b>12.8</b>
Price (US \$/tonne)	201.5	209.5	8.1	4.0	201.5	209.5	8.1	4.0
<b>SUGAR</b>								
Volume ('000 tonnes)	31.8	20.0	-11.8	-37.2	54.9	62.0	7.1	12.9
<b>Value (U.S. \$000)</b>	<b>18636.0</b>	<b>12978.0</b>	<b>-5658.0</b>	<b>-30.4</b>	<b>33107.0</b>	<b>41547.0</b>	<b>8440.0</b>	<b>25.5</b>
Price (US \$/tonne)	586.0	649.6	63.6	10.9	602.7	669.7	67.0	11.1
<b>BANANAS</b>								
Volume ('000 tonnes)	3.3	1.8	-1.5	-46.2	6.6	1.8	-4.8	-72.9
<b>Value (U.S. \$000)</b>	<b>1461.0</b>	<b>805.0</b>	<b>-656.0</b>	<b>-44.9</b>	<b>2840.0</b>	<b>805.0</b>	<b>-2035.0</b>	<b>-71.7</b>
Price (US \$/tonne)	440.5	450.7	10.3	2.3	430.2	450.7	20.5	4.8

1/REVISED

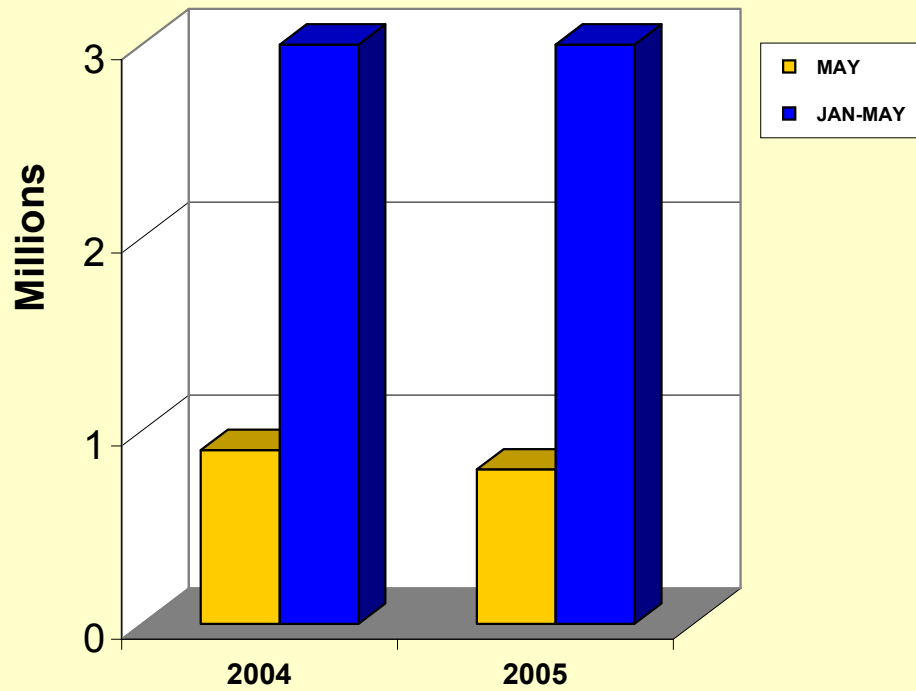
2/PROVISIONAL

External Sector Statistics Unit.

August 16, 2005

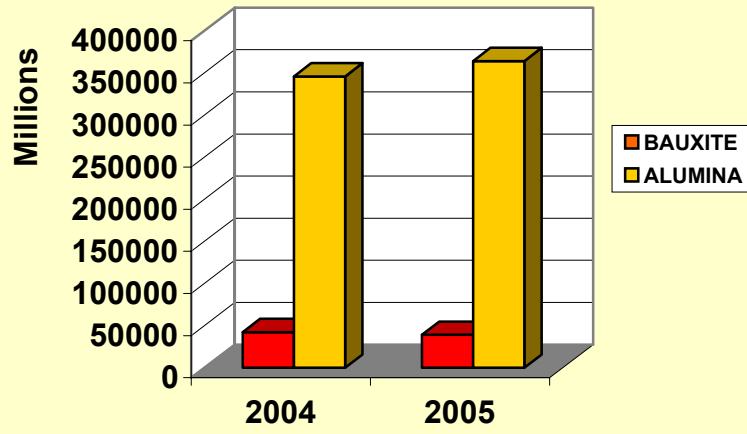
<b>GARMENTS EXPORTS</b> US\$Mn.				
	<b>2004</b>	<b>2005</b>	<b>CHANGE</b>	<b>%CHANGE</b>
JANUARY	0.6	0.8	0.2	33.3
FEBRUARY	0.9	0.8	-0.1	-11.1
MARCH	0.7	0.9	0.2	28.6
<b>JAN-MARCH</b>	<b>2.2</b>	<b>2.5</b>	<b>0.3</b>	<b>13.6</b>
APRIL	1.2	0.9	-0.3	-25.0
MAY	0.9	0.8	-0.1	-11.1
<b>JAN-MAY</b>	<b>4.3</b>	<b>4.2</b>	<b>-0.1</b>	<b>-2.3</b>
	<b>2004/2005</b>	<b>2005/2006</b>	<b>CHANGE</b>	<b>%CHANGE</b>
APRIL	1.2	0.9	-0.3	-25.0
MAY	0.9	0.8	-0.1	-11.1
<b>APRIL-MAY</b>	<b>2.1</b>	<b>1.7</b>	<b>-0.4</b>	<b>-19.0</b>
SOURCE: STATISTICAL INSTITUTE OF JAMAICA EXTERNAL SECTOR STATISTICS August 16, 2005				

**GARMENTS EXPORT US\$Mn**  
JAN - MAY



<b>BAUXITE</b>						
	2004 Volumes (Tonnes)	2005 Volumes (Tonnes)	% Change	2004 Values (\$ 000')	2005 Values (\$ 000')	% Change
JANUARY	375063.0	393019.0	4.8	9167.0	9566.0	4.4
FEBRUARY	230889.0	313182.0	35.6	5643.0	7623.0	35.1
MARCH	380995.0	351972.0	-7.6	9312.0	8567.0	-8.0
<b>JANUARY-MARCH</b>	<b>986947.0</b>	<b>1058173.0</b>	<b>7.2</b>	<b>24122.0</b>	<b>25756.0</b>	<b>6.8</b>
APRIL	425749.0	277541.0	-34.8	10124.0	6755.0	-33.3
MAY	337950.0	271106.0	-19.8	8037.0	6599.0	-17.9
<b>JAN-MAY</b>	<b>1750646.0</b>	<b>1606820.0</b>	<b>-8.2</b>	<b>42283.0</b>	<b>39110.0</b>	<b>-7.5</b>
<b>ALUMINA</b>						
	2004 Volumes (Tonnes)	2005 Volumes (Tonnes)	% Change	2004 Values (\$ 000')	2005 Values (\$ 000')	% Change
JANUARY	353037.0	358434.0	1.5	73456.0	75332.0	2.6
FEBRUARY	340880.0	273943.0	-19.6	70926.0	57575.0	-18.8
MARCH	322755.0	325312.0	0.8	67156.0	68371.0	1.8
<b>JANUARY-MARCH</b>	<b>1016672.0</b>	<b>957689.0</b>	<b>-5.8</b>	<b>211538.0</b>	<b>201278.0</b>	<b>-4.9</b>
APRIL	419226.0	444643.0	6.1	83556.0	93183.0	11.5
MAY	297349.0	332315.0	11.8	50787.0	69627.0	37.1
<b>JAN-MAY</b>	<b>1733247.0</b>	<b>1734647.0</b>	<b>0.1</b>	<b>345881.0</b>	<b>364088.0</b>	<b>5.3</b>

**BAUXITE/ALUMINA US\$Mn  
JAN-MAY 2005**



EXPORTS OF SELECTED NON-TRADITIONAL DOMESTIC COMMODITIES US\$ 000

COMMODITIES	2004	2005	%	2004	2005	%	2004/2005	2005/2006	%
	JAN-MAY	JAN-MAY		MAY	MAY		APR-MAY	APR-MAY	
<b>FOOD</b>									
ACKEE	3383.0	3858.0	14.0	383.0	420.0	9.7	1377.0	1144.0	-16.9
FISH	3429.0	3631.0	5.9	717.0	1158.0	61.5	1395.0	2202.0	57.8
BREADFRUIT	410.0	356.0	-13.2	35.0	56.0	60.0	250.0	206.0	-17.6
CUCUMBERS	7.0	6.0	-14.3	3.0	1.0	-66.7	4.0	3.0	-25.0
PUMPKINS	165.0	144.0	-12.7	9.0	12.0	33.3	29.0	39.0	34.5
OTHER VEGETABLES	40.0	44.0	10.0	7.0	6.0	-14.3	23.0	14.0	-39.1
DASHEEN	489.0	309.0	-36.8	57.0	25.0	-56.1	161.0	82.0	-49.1
CASSAVA	0.0	0.0	0.0	0.0	0.0	0.0	0.0	0.0	0.0
SWEET POTATOES	611.0	785.0	28.5	164.0	140.0	-14.6	302.0	292.0	-3.3
YAMS	5994.0	6021.0	0.5	1046.0	1456.0	39.2	2071.0	2658.0	28.3
AVOCADOES	0.0	0.0	0.0	0.0	0.0	0.0	0.0	0.0	0.0
MANGOES	411.0	566.0	37.7	189.0	250.0	32.3	269.0	418.0	55.4
OTHER ROOTS	189.0	204.0	7.9	38.0	42.0	10.5	76.0	82.0	7.9
PAPAYAS	1006.0	952.0	-5.4	203.0	241.0	18.7	393.0	536.0	36.4
MELON	0.0	0.0	0.0	0.0	0.0	0.0	0.0	0.0	0.0
<b>Total</b>	<b>16134.0</b>	<b>16876.0</b>	<b>4.6</b>	<b>2851.0</b>	<b>3807.0</b>	<b>33.5</b>	<b>6350.0</b>	<b>7676.0</b>	<b>20.9</b>
<b>CRUDE MATERIALS</b>									
Cut Flowers	26.0	17.0	-34.6	5.0	5.0	0.0	10.0	8.0	-20.0
Live Plts.&Foliage	7.0	18.0	157.1	0.0	3.0	100.0	0.0	6.0	100.0
<b>Total</b>	<b>42.0</b>	<b>43.0</b>	<b>2.4</b>	<b>8.0</b>	<b>9.0</b>	<b>12.5</b>	<b>14.0</b>	<b>17.0</b>	<b>21.4</b>

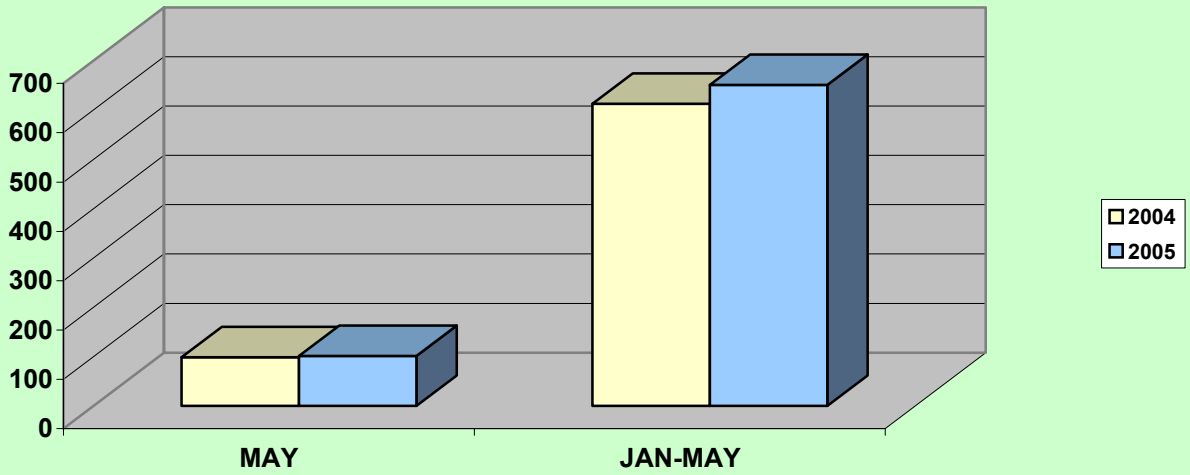
August 16, 2005

## TOURISM STATISTICS

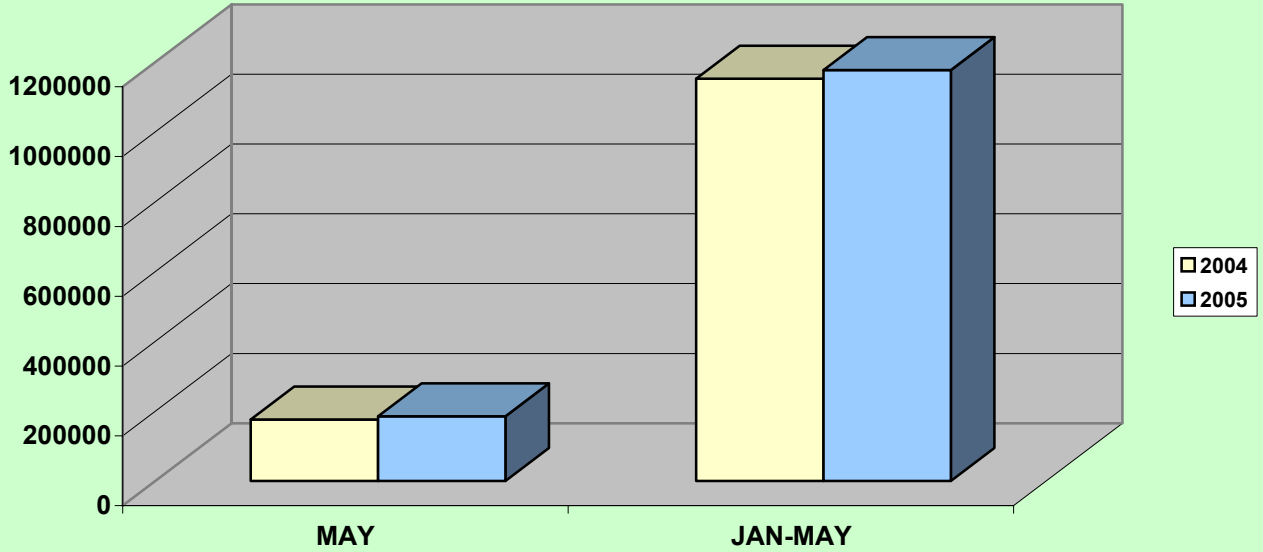
	2004 MAY	2005 MAY	% CHNG	2004 JAN-MAY	2005 JAN-MAY	% CHNG
<b>TOTAL STOP-OVERS</b>	<b>111759</b>	<b>110821</b>	<b>-0.8</b>	<b>608945</b>	<b>629368</b>	<b>3.4</b>
<b>FOREIGN NAT. STOP-OVERS(# of)</b>	<b>105842</b>	<b>105319</b>	<b>-0.5</b>	<b>579927</b>	<b>599460</b>	<b>3.4</b>
Long Stay	99382	101790	2.4	546396	579109	6.0
Short Stay	6460	3529	-45.4	33531	20351	-39.3
NON-RES. JAMAICANS	5917	5502	-7.0	29018	29908	3.1
CRUISE PASSENGERS	64424	74505	15.6	543435	548132	0.9
<b>TOTAL TOURISTS</b>	<b>176183</b>	<b>185326</b>	<b>5.2</b>	<b>1152380</b>	<b>1177500</b>	<b>2.2</b>
ARMED FORCES	0	0	-	0	0	-
<b>TOTAL VISITORS</b>	<b>176183</b>	<b>185326</b>	<b>5.2</b>	<b>1152380</b>	<b>1177500</b>	<b>2.2</b>
AVG.LENGTH.OF STAY	8.7	8.9	2.3	8.9	9.0	0.7
<b>ESTM.EXPD.(US\$MN)</b>	<b>98.7</b>	<b>101.0</b>	<b>2.3</b>	<b>612.3</b>	<b>650.6</b>	<b>6.3</b>
<b>Avg. Est.Exp/per person/per day (US\$)</b>						
Stop-Overs	98.0	98.0	0.0	107.4	109.4	1.8
A.forces/Cruise	88.9	88.9	0.0	78.0	85.0	9.0

*External Sector Statistics Unit  
Economic Information & Publications Dept.  
August 16, 2005*

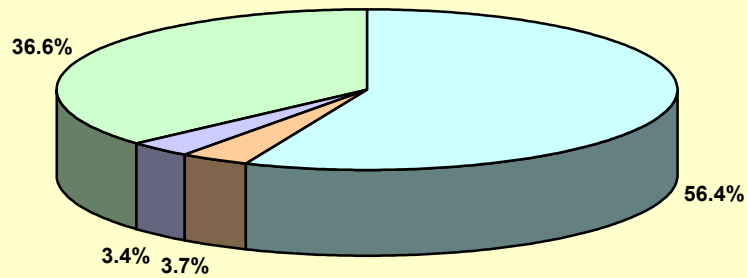
### Estimated Tourist Expenditure (US\$m)



### Jamaica: Total Visitors

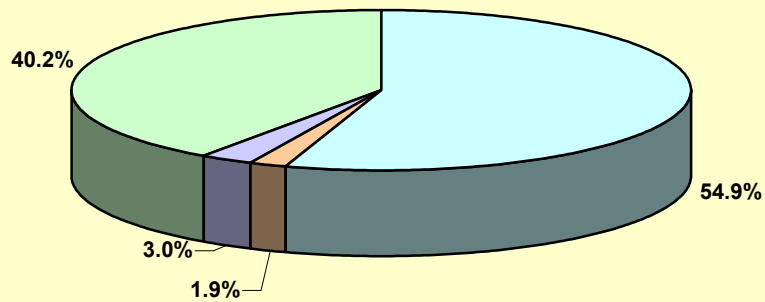


### Composition of Visitors May 2004



For. Nat. Long Stay For. Nat. Short Stay Non-Res. Jamaicans Cruise Passengers

### Composition of Visitors May 2005



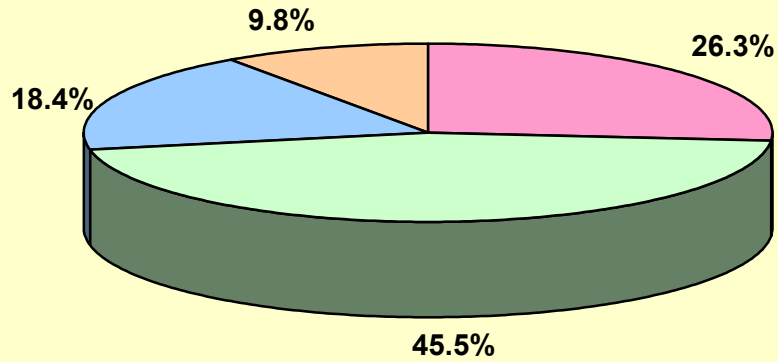
For. Nat. Long Stay For. Nat. Short Stay Non-Res. Jamaicans Cruise Passengers

<b>TOURISM STATISTICS</b>				
	<b>2004/2005</b>	<b>2005/2006</b>		<b>%</b>
	<b>APR-MAY</b>	<b>APR-MAY</b>	<b>CHNG</b>	<b>CHNG</b>
<b>TOTAL STOP-OVERS</b>	<b>242860</b>	<b>234399</b>	<b>-8461</b>	<b>-3.5</b>
FOREIGN NAT. STOP-OVERS	229683	222419	-7264	-3.2
Long Stay	216448	214989	-1459	-0.7
Short Stay	13235	7430	-5805	-43.9
NON-RES. JAMAICANS	13177	11980	-1197	-9.1
CRUISE PASSENGERS	174168	173159	-1009	-0.6
<b>TOTAL TOURISTS</b>	<b>417028</b>	<b>407558</b>	<b>-9470</b>	<b>-2.3</b>
ARMED FORCES	0	0	0	-
<b>TOTAL VISITORS</b>	<b>417028</b>	<b>407558</b>	<b>-9470</b>	<b>-2.3</b>
AVG.LENGTH.OF STAY	8.7	9.0	0.3	2.9
<b>ESTM.EXPD.(US\$MN)</b>	<b>228.7</b>	<b>227.4</b>	<b>-1.3</b>	<b>-0.6</b>
<b>Avg. Est.Exp/per person/per day (US\$)</b>				
Stop-Overs	103.9	103.6	-0.3	-0.3
A.forces/Cruise	82.1	83.0	1.0	1.2
<i>External Sector Statistics Unit</i>				
<i>Economic Information &amp; Publications Dept.</i>				

<b>SOURCES OF PRIVATE TRANSFERS</b>								
<b>(US\$Mn)</b>								
	<b>2004</b>	<b>2005</b>			<b>2004</b>	<b>2005</b>		
	<b>MAY</b>	<b>MAY</b>	<b>CHNG</b>	<b>%CHNG</b>	<b>JAN - MAY</b>	<b>JAN - MAY</b>	<b>CHNG</b>	<b>%CHNG</b>
<b>TOTAL INFLOWS</b>	<b>137.75</b>	<b>145.08</b>	<b>7.33</b>	<b>5.32</b>	<b>665.09</b>	<b>815.93</b>	<b>150.83</b>	<b>22.68</b>
COMMERCIAL BANKS	36.24	29.76	-6.48	-17.87	163.44	200.19	36.75	22.49
REMITTANCE COMPS.	62.72	73.03	10.32	16.45	298.61	349.31	50.70	16.98
POST OFFICE	0.10	0.11	0.01	5.00	0.50	0.53	0.03	5.00
BUILDING SOCIETIES	25.29	26.50	1.21	4.79	135.55	127.22	-8.33	-6.14
OTHER	13.40	15.68	2.28	17.01	67.00	138.68	71.68	106.98

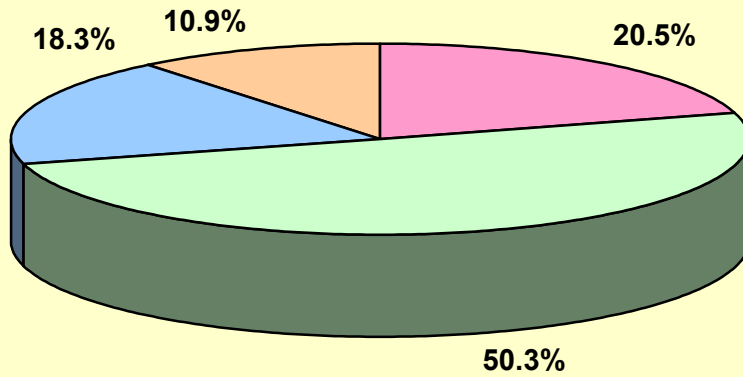
<b>SOURCES OF PRIVATE TRANSFERS</b>				
<b>(US\$Mn)</b>				
	<b>2004/2005</b>	<b>2005/2006</b>		
	<b>APR - MAY</b>	<b>APR - MAY</b>	<b>CHNG</b>	<b>%CHNG</b>
<b>TOTAL INFLOWS</b>	<b>267.30</b>	<b>309.58</b>	<b>42.28</b>	<b>15.82</b>
COMMERCIAL BANKS	66.80	76.39	9.59	14.36
REMITTANCE COMPS.	123.67	148.16	24.49	19.80
POST OFFICE	0.20	0.21	0.01	5.00
BUILDING SOCIETIES	52.63	53.46	0.83	1.58
OTHER	24.00	31.36	7.36	30.67

**Sources of Private Transfers (US\$m)**  
**May 2004**



Commercial Banks Remittance Companies Building Societies Other

**Sources of Private Transfers (US\$m)**  
**May 2005**



Commercial Banks Remittance Companies Building Societies Other

**Balance of Payments of Jamaica**

US\$Mn.

	<b>Jan-May 2004</b>	<b>Jan-May 2005</b>	<b>Change</b>
<b>1. Current Account</b>	<b>-74.6</b>	<b>-189.4</b>	<b>-114.8</b>
<b>A. Goods Balance</b>	<b>-686.5</b>	<b>-926.0</b>	<b>-239.5</b>
Exports	710.4	675.7	-34.7
Imports	1396.9	1601.7	204.8
<b>B. Services Balance</b>	<b>300.4</b>	<b>340.0</b>	<b>39.6</b>
Transportation	-31.4	-63.1	-31.7
Travel	510.2	567.0	56.8
Other Services	-178.4	-163.9	14.5
<b>C. Income</b>	<b>-240.1</b>	<b>-246.8</b>	<b>-6.7</b>
Compensation of employees	9.9	11.5	1.6
Investment Income	-250.0	-258.3	-8.3
<b>D. Current Transfers</b>	<b>551.6</b>	<b>643.4</b>	<b>91.8</b>
Official	45.4	58.9	13.5
Private	506.2	584.5	78.3
<b>2. Capital &amp; Financial Account</b>	<b>74.6</b>	<b>189.4</b>	<b>114.8</b>
<b>A. Capital Account</b>	<b>0.3</b>	<b>-4.8</b>	<b>-5.1</b>
Capital Transfers	0.3	-4.8	-5.1
Official	5.7	0.2	-5.5
Private	-5.4	-5.0	0.4
Acq/dis. of non-produced non-fin. assets	<b>0.0</b>	<b>0.0</b>	<b>0.0</b>
<b>B. Financial Account</b>	<b>74.3</b>	<b>194.2</b>	<b>119.9</b>
Other Official Investment	348.4	-75.0	-423.4
Other Private Investment(incl. Errors & omissions)	276.6	485.2	208.6
Reserves	-550.7	-216.0	
Govt. Reserves			

*External Sector Statistics Unit*

*Economic Information & Publications Dept.*

*August 16, 2005*

<b>Balance of Payments of Jamaica</b>			
<b>US\$Mn.</b>			
	<b>Jan-May 2004</b>	<b>Jan-May 2005</b>	<b>Change</b>
<b>Services (Net)</b>	<b>300.4</b>	<b>340.0</b>	<b>39.6</b>
Inflows	994.1	1035.1	41.0
Outflows	693.7	695.1	1.4
<b>Transportation</b>	<b>-31.4</b>	<b>-63.1</b>	<b>-31.7</b>
Inflows	227.9	230.8	2.9
Outflows	259.3	293.9	34.6
<b>Travel</b>	<b>510.2</b>	<b>567.0</b>	<b>56.8</b>
Inflows	612.3	650.5	38.2
Outflows	102.1	83.5	-18.6
<b>Other Services</b>	<b>-178.4</b>	<b>-163.9</b>	<b>14.5</b>
Inflows	153.9	153.8	-0.1
Outflows	332.3	317.7	-14.6
<b>Income (Net)</b>	<b>-240.1</b>	<b>-246.8</b>	<b>-6.7</b>
<b>Compensation of Employees</b>	<b>9.9</b>	<b>11.5</b>	<b>1.6</b>
Inflows	29.7	38.9	9.2
Outflows	19.8	27.4	7.6
<b>Investment Income</b>	<b>-250.0</b>	<b>-258.3</b>	<b>-8.3</b>
Inflows	54.5	61.3	6.8
Outflows	304.5	319.6	15.1
- Bank of Jamaica	0.17	0.48	0.31
- Government Direct	92.1	121.2	29.1
- Government Guaranteed	0.5	0.5	0.0
- Private	0.0	0.0	0.0
- Direct Investment	154.2	140.0	-14.2
- Other	57.4	57.4	0.0
<b>Current Transfers (Net)</b>	<b>551.6</b>	<b>643.4</b>	<b>91.8</b>
Inflows	712.0	876.3	164.3
Outflows	160.4	232.9	72.5
<b>Official</b>	<b>45.4</b>	<b>58.9</b>	<b>13.5</b>
Inflows	46.9	60.4	13.5
Outflows	1.5	1.5	0.0
<b>Private</b>	<b>506.2</b>	<b>584.5</b>	<b>78.3</b>
Inflows	665.1	815.9	150.8
Outflows	158.9	231.4	72.5

	Balance of Payments of Jamaica US\$Mn.		Change
	Jan-May 2005	Jan-May 2005	
<b>Capital &amp; Financial Account (Net)</b>	<b>74.6</b>	<b>189.4</b>	<b>114.8</b>
<b>Capital Account (Net)</b>	<b>0.3</b>	<b>-4.8</b>	<b>-5.1</b>
<b>1. Capital Transfers</b>	<b>0.3</b>	<b>-4.8</b>	<b>-5.1</b>
<b>Official</b>	<b>5.7</b>	<b>0.2</b>	<b>-5.5</b>
Inflows	5.7	0.2	-5.5
Outflows	0.0	0.0	0.0
<b>Private</b>	<b>-5.4</b>	<b>-5.0</b>	<b>0.4</b>
Inflows	8.6	9.0	0.4
Outflows	14.0	14.0	0.0
<b>2. Acq/disp. of non-produced non-fin. assets</b>	<b>0.0</b>	<b>0.0</b>	<b>0.0</b>
Inflows	0.0	0.0	0.0
Outflows	0.0	0.0	0.0
<b>Financial Account (Net)</b>	<b>74.3</b>	<b>194.2</b>	<b>119.9</b>
<b>Other Official Investments</b>	<b>348.4</b>	<b>-75.0</b>	<b>-423.4</b>
Inflows	445.4	18.8	-426.6
Outflows	97.0	93.8	-3.2
<b>Other Private Investments (incl.errors &amp; omissions)</b>	<b>276.6</b>	<b>485.2</b>	<b>208.6</b>
Inflows	1180.1	1427.2	247.1
Outflows	903.5	942.0	38.5
<b>Reserves</b>	<b>-550.7</b>	<b>-216.0</b>	
<b>Govt. Reserves</b>			

	Balance of Payments of Jamaica		
	Apr-May 2004/05	US\$Mn. Apr-May 2005/06	Change
<b>1. Current Account</b>	<b>-40.2</b>	<b>-111.9</b>	<b>-71.7</b>
<b>A. Goods Balance</b>	<b>-264.6</b>	<b>-355.4</b>	<b>-90.8</b>
Exports	294.4	304.2	9.8
Imports	559.0	659.6	100.6
<b>B. Services Balance</b>	<b>98.2</b>	<b>97.9</b>	<b>-0.3</b>
Transportation	-17.3	-36.6	-19.3
Travel	185.0	197.7	12.7
Other Services	-69.5	-63.2	6.3
<b>C. Income</b>	<b>-91.8</b>	<b>-102.9</b>	<b>-11.1</b>
Compensation of employees	5.1	4.8	-0.3
Investment Income	-96.9	-107.7	-10.8
<b>D. Current Transfers</b>	<b>218.0</b>	<b>248.5</b>	<b>30.5</b>
Official	17.9	19.7	1.8
Private	200.1	228.8	28.7
<b>2. Capital &amp; Financial Account</b>	<b>40.2</b>	<b>111.9</b>	<b>71.7</b>
<b>A. Capital Account</b>	<b>0.7</b>	<b>-1.8</b>	<b>-2.5</b>
Capital Transfers	0.7	-1.8	-2.5
Official	2.3	0.1	-2.2
Private	-1.6	-1.9	-0.3
Acq/dis. of non-produced non-fin. assets	0.0	0.0	0.0
<b>B. Financial Account</b>	<b>39.5</b>	<b>113.7</b>	<b>74.2</b>
Other Official Investment	94.9	-26.6	-121.5
Other Private Investment(incl. Errors & omissions)	91.6	313.2	221.6
Reserves	-147.0	-172.9	
Govt. Reserves			

*External Sector Statistics Unit  
Economic Information & Publications Dept.  
August 16, 2005*

<b>Balance of Payments of Jamaica</b>			
<b>US\$Mn.</b>			
	<b>Apr-May 2004/05</b>	<b>Apr-May 2005/06</b>	<b>Change</b>
<b>Services (Net)</b>	<b>98.2</b>	<b>97.9</b>	<b>-0.3</b>
Inflows	370.5	369.7	-0.8
Outflows	272.3	271.8	-0.5
<b>Transportation</b>	<b>-17.3</b>	<b>-36.6</b>	<b>-19.3</b>
Inflows	82.4	79.9	-2.5
Outflows	99.7	116.5	16.8
<b>Travel</b>	<b>185.0</b>	<b>197.7</b>	<b>12.7</b>
Inflows	228.7	230.6	1.9
Outflows	43.7	32.9	-10.8
<b>Other Services</b>	<b>-69.5</b>	<b>-63.2</b>	<b>6.3</b>
Inflows	59.4	59.2	-0.2
Outflows	128.9	122.4	-6.5
<b>Income (Net)</b>	<b>-91.8</b>	<b>-102.9</b>	<b>-11.1</b>
<b>Compensation of Employees</b>	<b>5.1</b>	<b>4.8</b>	<b>-0.3</b>
Inflows	13.4	17.5	4.1
Outflows	8.3	12.7	4.4
<b>Investment Income</b>	<b>-96.9</b>	<b>-107.7</b>	<b>-10.8</b>
Inflows	22.8	25.8	3.0
Outflows	119.7	133.5	13.8
- Bank of Jamaica	0.0	0.4	0.4
- Government Direct	39.2	39.9	0.7
- Government Guaranteed	0.2	0.2	0.1
- Private	0.0	0.0	0.0
- Direct Investment	57.4	70.1	12.7
- Other	23.0	23.0	0.0
<b>Current Transfers (Net)</b>	<b>218.0</b>	<b>248.5</b>	<b>30.5</b>
Inflows	288.6	329.9	41.3
Outflows	70.6	81.4	10.8
<b>Official</b>	<b>17.9</b>	<b>19.7</b>	<b>1.8</b>
Inflows	18.5	20.3	1.8
Outflows	0.6	0.6	0.0
<b>Private</b>	<b>200.1</b>	<b>228.8</b>	<b>28.7</b>
Inflows	270.1	309.6	39.5
Outflows	70.0	80.8	10.8

	<b>Balance of Payments of Jamaica</b>		
	<b>US\$Mn.</b>		
	<b>Apr-May 2004/05</b>	<b>Apr-May 2005/06</b>	<b>Change</b>
<b>Capital &amp; Financial Account (Net)</b>	<b>40.2</b>	<b>111.9</b>	<b>71.7</b>
<b>Capital Account (Net)</b>	<b>0.7</b>	<b>-1.8</b>	<b>-2.5</b>
<b>1. Capital Transfers</b>	0.7	-1.8	-2.5
<b>Official</b>	<b>2.3</b>	<b>0.1</b>	<b>-2.2</b>
Inflows	2.3	0.1	-2.2
Outflows	0.0	0.0	0.0
<b>Private</b>	<b>-1.6</b>	<b>-1.9</b>	<b>-0.3</b>
Inflows	4.0	3.7	-0.3
Outflows	5.6	5.6	0.0
<b>2. Acq/disp. of non-produced non-fin. assets</b>	<b>0.0</b>	<b>0.0</b>	<b>0.0</b>
Inflows	0.0	0.0	0.0
Outflows	0.0	0.0	0.0
<b>Financial Account (Net)</b>	<b>39.5</b>	<b>113.7</b>	<b>74.2</b>
<b>Other Official Investments</b>	<b>94.9</b>	<b>-26.6</b>	<b>-121.5</b>
Inflows	132.8	10.2	-122.6
Outflows	37.9	36.8	-1.1
<b>Other Private Investments (incl.errors &amp; omissions)</b>	<b>91.6</b>	<b>313.2</b>	<b>221.6</b>
Inflows	444.8	731.3	286.5
Outflows	353.2	418.1	64.9
<b>Reserves</b>	<b>-147.0</b>	<b>-172.9</b>	
<b>Govt. Reserves</b>			



