



THE BALANCE OF PAYMENTS

Preliminary STATISTICAL UPDATE

March 2005

External Sector Statistics Unit
Economic Information & Publications Department
RESEARCH AND ECONOMIC PROGRAMMING DIVISION

BANK OF JAMAICA
P.O. Box 621
Kingston, Jamaica

TABLE OF CONTENTS

	Pages
External Trade	1
Exports.....	7
Garments.....	8
Bauxite.....	10
Selected Non -Traditionals.....	12
Tourism	13
Private Transfer flows.....	17
B. O. P. Reports.....	19

EXTERNAL TRADE US\$000								
	MAR 2005	MAR 1/ 2006	CHANGE	%CHANGE	JAN-MAR 2005	JAN-MAR 1/ 2006	CHANGE	%CHANGE
TOTAL GOODS EXPORTS(F.O.B)	132245	203306	71061	53.7	381220	518074	136854	35.9
TOTAL GOODS IMPORTS(C.I.F)	425988	446703	20715	4.9	1127755	1388476	260721	23.1
TRADE BALANCE	-293743	-243397	50346	17.1	-746535	-870402	-123867	-16.6
VALUE OF TOTAL GOODS EXPORTS US\$000								
	MAR 2005	MAR 2006	CHANGE	%CHANGE	JAN-MAR 2005	JAN-MAR 2006	CHANGE	%CHANGE
O.FOOD	25178	31594	6416	25.5	58999	82362	23363	39.6
1.BEVER. & TOBAC	6587	7295	708	10.7	18181	22849	4668	25.7
2.CRUDE MATS	81157	107202	26045	32.1	239934	282511	42577	17.7
3.MINERAL FUELS	2025	20802	18777	927.3	5152	59003	53851	1045.2
4.ANI.& VEG OILS	8	16	8	0.0	25	19	-6	-24.0
5.CHEMICALS	2205	18820	16615	753.5	17805	22969	5164	29.0
6.MANUF. GOODS	1080	1612	532	49.3	2487	2991	504	20.3
7.MACH.& TRANSP.	2511	2615	104	4.1	4473	7326	2853	63.8
8.MISC. MANUF	1518	2467	949	62.5	4419	5408	989	22.4
9.MISC. COMMDS.	0	0	0	0.0	0	0	0	0.0
GENERAL MERCHANDISE EXPS.	122269	192423	70154	57.4	351475	485438	133963	38.1
FREEZONE EXPORTS	3644	4243	599	16.4	10749	12716	1967	18.3
GOODS PROCURED IN PORTS	6332	6640	308	4.9	18996	19920	924	4.9
TOTAL GOODS EXPORTS	132245	203306	71061	53.7	381220	518074	136854	35.9
TRADITIONAL & NON-TRADITIONAL EXPORTS US\$000								
	MAR 2005	MAR 2006	CHANGE	%CHANGE	JAN-MAR 2005	JAN-MAR 2006	CHANGE	%CHANGE
MAJOR TRAD. EXPORT	94388	119391	25003	26.5	267782	315809	48027	17.9
BAUXITE	8567	10796	2229	26.0	25756	27472	1716	6.7
ALUMINA	71536	90327	18791	26.3	210596	240754	30158	14.3
SUGAR	14285	17210	2925	20.5	31430	44593	13163	41.9
BANANAS	0	1058	1058	0.0	0	2990	2990	0.0
OTHER TRAD. EXPORT	5198	8091	2893	55.7	15110	20919	5809	38.4
CITRUS	197	146	-51	-25.9	979	517	-462	-47.2
COCOA	126	186	60	47.6	431	443	12	2.8
COFFEE	1942	4121	2179	112.2	4454	8843	4389	98.5
PIMENTO	146	67	-79	100.0	373	462	89	23.9
RUM	2540	3386	846	33.3	8325	10400	2075	24.9
GYPSUM	247	185	-62	0.0	548	254	-294	-53.6
NON-TRAD. EXPORTS	19154	60802	41648	217.4	61322	137797	76475	124.7
RE-EXPORTS	3529	4139	610	17.3	7261	10913	3652	50.3
GENERAL MERCHANDISE EXPS.	122269	192423	70154	57.4	351475	485438	133963	38.1
FREEZONE EXPORTS	3644	4243	599	16.4	10749	12716	1967	18.3
GOODS PROCURED IN PORTS	6332	6640	308	4.9	18996	19920	924	4.9
TOTAL GOODS EXPORTS	132245	203306	71061	53.7	381220	518074	136854	35.9

VALUE OF GOODS IMPORTS BY S.I.T.C. US\$000

	MAR 2005	MAR1/ 2006	CHANGE	%CHANGE	JAN-MAR 2005	JAN-MAR1/ 2006	CHANGE	%CHANGE
0.FOOD	46753	47177	424	0.9	139769	158646	18877	13.5
1.BEV. & TOBAC	3725	5817	2092	56.2	12729	15499	2770	21.8
2.CRUDE MATS.	7599	16566	8967	118.0	20824	27418	6594	31.7
3.MIN.FUEL	131776	123376	-8400	-6.4	300463	454760	154297	51.4
4.ANI & VEG OIL	3290	4384	1094	33.3	8057	7210	-847	-10.5
5.CHEMICAL	49918	50737	819	1.6	128403	153960	25557	19.9
6.MANUF. GOOD	57724	59706	1982	3.4	159709	146952	-12757	-8.0
7.MACH.& TRANSP	66396	79667	13271	20.0	204015	257765	53750	26.3
8.MISC.MAN.GOOD	43087	41824	-1263	-2.9	106725	113308	6583	6.2
9.MISC. COMMDS.	5287	6195	908	17.2	14549	17401	2852	19.6
GENERAL MERCHANDISE IMPORTS	415555	435449	19894	4.8	1095243	1352919	257676	23.5
FREEZONE IMPORTS	1163	1519	356	30.6	4702	6352	1650	35.1
GOODS PROCURED IN PORTS	9270	9735	465	5.0	27810	29205	1395	5.0
TOTAL GOODS IMPORTS	425988	446703	20715	4.9	1127755	1388476	260721	23.1

1/PROVISIONAL

MAJOR TRADITIONALS (VOLUME, VALUE, PRICE)

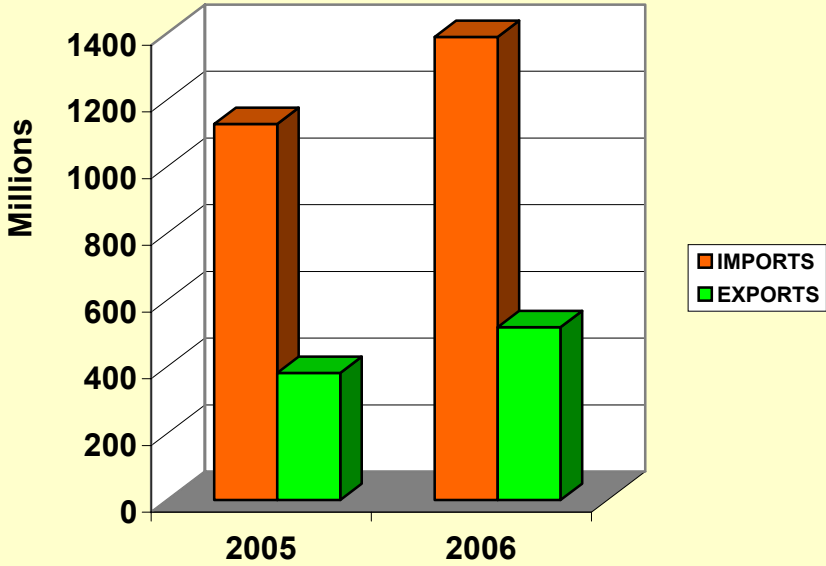
	MAR 2005	MAR 1/ 2006	CHANGE	%CHANGE	JAN-MAR 2005	JAN-MAR 1/ 2006	CHANGE	%CHANGE
BAUXITE								
Volume ('000 tonnes)	352.0	433.4	81.4	23.1	1058.2	1102.9	44.7	4.2
Value (U.S. \$000)	8567.0	10796.0	2229.0	26.0	25756.0	27472.0	1716.0	6.7
Price (US \$/tonne)	24.3	24.9	0.6	2.3	24.3	24.9	0.6	2.3
ALUMINA								
Volume ('000 tonnes)	325.3	365.7	40.4	12.4	957.7	974.8	17.1	1.8
Value (U.S. \$000)	71536.0	90327.0	18791.0	26.3	210596.0	240754.0	30158.0	14.3
Price (US \$/tonne)	219.9	247.0	27.1	12.3	219.9	247.0	27.1	12.3
SUGAR								
Volume ('000 tonnes)	21.0	27.5	6.5	31.0	44.9	70.8	25.9	57.7
Value (U.S. \$000)	14285.0	17210.0	2925.0	20.5	31430.0	44593.0	13163.0	41.9
Price (US \$/tonne)	679.6	625.2	-54.4	-8.0	700.6	630.1	-70.5	-10.1
BANANAS								
Volume ('000 tonnes)	0.0	2.5	2.5	-	0.0	7.7	7.7	-
Value (U.S. \$000)	0.0	1058.0	1058.0	-	0.0	2990.0	2990.0	-
Price (US \$/tonne)	0.0	426.8	426.8	-	0.0	388.2	388.2	-

1/PROVISIONAL

External Sector Statistics Unit.

2006 August

VALUE OF IMPORTS & EXPORT US\$Mn
JAN - MARCH



EXTERNAL TRADE US\$000

	MAR	MAR 1/	CHANGE	%CHANGE	APR-MAR	APR-MAR 1/	CHANGE	%CHANGE
	2004/2005	2005/2006			2004/2005	2005/2006		
TOTAL GOODS EXPORTS(F.O.B)	132245	203306	71061	53.7	1566878	1801174	234296	15.0
TOTAL GOODS IMPORTS(C.I.F)	425988	446703	20715	4.9	4264978	5126948	861970	20.2
TRADE BALANCE	-293743	-243397	50346	17.1	-2698100	-3325774	-627674	-23.3

VALUE OF TOTAL GOODS EXPORTS US\$000

	MAR	MAR	CHANGE	%CHANGE	APR-MAR	APR-MAR	CHANGE	%CHANGE
	2004/2005	2005/2006			2004/2005	2005/2006		
O.FOOD	25178	31594	6416	25.5	224601	216888	-7713	-3.4
1.BEVER. & TOBAC	6587	7295	708	10.7	66758	83570	16812	25.2
2.CRUDE MATS	81157	107202	26045	32.1	932245	1082426	150181	16.1
3.MINERAL FUELS	2025	20802	18777	927.3	32112	165225	133113	414.5
4.ANI.& VEG OILS	8	16	8	0.0	72	113	41	56.9
5.CHEMICALS	2205	18820	16615	753.5	73571	62375	-11196	-15.2
6.MANUF. GOODS	1080	1612	532	49.3	10242	11544	1302	12.7
7.MACH.& TRANSP.	2511	2615	104	4.1	19585	21040	1455	7.4
8.MISC. MANUF	1518	2467	949	62.5	20806	22324	1518	7.3
9.MISC. COMMDS.	0	0	0	0.0	0	0	0	0.0
GENERAL MERCHANDISE EXPS.	122269	192423	70154	57.4	1379992	1665505	285513	20.7
FREEZONE EXPORTS	3644	4243	599	16.4	115155	58761	-56394	-49.0
GOODS PROCURED IN PORTS	6332	6640	308	4.9	71731	76908	5177	7.2
TOTAL GOODS EXPORTS	132245	203306	71061	53.7	1566878	1801174	234296	15.0

TRADITIONAL & NON-TRADITIONAL EXPORTS US\$000

	MAR	MAR	CHANGE	%CHANGE	APR-MAR	APR-MAR	CHANGE	%CHANGE
	2004/2005	2005/2006			2004/2005	2005/2006		
MAJOR TRAD. EXPORT	94388	119391	25003	26.5	1002281	1148600	146319	14.6
BAUXITE	8567	10796	2229	26.0	82031	100506	18475	22.5
ALUMINA	71536	90327	18791	26.3	825055	950443	125388	15.2
SUGAR	14285	17210	2925	20.5	87023	89968	2945	3.4
BANANAS	0	1058	1058	0.0	8172	7683	-489	-6.0
OTHER TRAD. EXPORT	5198	8091	2893	55.7	74110	65290	-8820	-11.9
CITRUS	197	146	-51	-25.9	1928	1095	-833	-43.2
COCOA	126	186	60	47.6	2055	1363	-692	-33.7
COFFEE	1942	4121	2179	112.2	36116	21726	-14390	-39.8
PIMENTO	146	67	-79	100.0	1967	2946	979	49.8
RUM	2540	3386	846	33.3	30162	36328	6166	20.4
GYPSUM	247	185	-62	0.0	1882	1832	-50	-2.7
NON-TRAD. EXPORTS	19154	60802	41648	217.4	272515	418122	145607	53.4
RE-EXPORTS	3529	4139	610	17.3	31086	33493	2407	7.7
GENERAL MERCHANDISE EXPS.	122269	192423	70154	57.4	1379992	1665505	285513	20.7
FREEZONE EXPORTS	3644	4243	599	16.4	115155	58761	-56394	-49.0
GOODS PROCURED IN PORTS	6332	6640	308	4.9	71731	76908	5177	7.2
TOTAL GOODS EXPORTS	132245	203306	71061	53.7	1566878	1801174	234296	15.0

VALUE OF GOODS IMPORTS BY S.I.T.C. US\$000

	MAR 2004/2005	MAR/ 2005/2006	CHANGE	%CHANGE	APR-MAR 2004/2005	APR-MAR/ 2005/2006	CHANGE	%CHANGE
0.FOOD	46753	47177	424	0.9	533837	621818	87981	16.5
1.BEV. & TOBAC	3725	5817	2092	56.2	48028	58718	10690	22.3
2.CRUDE MATS.	7599	16566	8967	118.0	74369	85759	11390	15.3
3.MIN.FUEL	131776	123376	-8400	-6.4	986460	1514374	527914	53.5
4.ANI & VEG OIL	3290	4384	1094	33.3	33176	26815	-6361	-19.2
5.CHEMICAL	49918	50737	819	1.6	420705	580879	160174	38.1
6.MANUF. GOOD	57724	59706	1982	3.4	611235	625056	13821	2.3
7.MACH.& TRANSP	66396	79667	13271	20.0	881515	923745	42230	4.8
8.MISC.MAN.GOOD	43087	41824	-1263	-2.9	433443	483763	50320	11.6
9.MISC. COMMDS.	5287	6195	908	17.2	69160	76191	7031	10.2
GENERAL MERCHANDISE IMPORTS	415555	435449	19894	4.8	4091928	4997118	905190	22.1
FREEZONE IMPORTS	1163	1519	356	30.6	61018	17195	-43823	-71.8
GOODS PROCURED IN PORTS	9270	9735	465	5.0	112032	112635	603	0.5
TOTAL GOODS IMPORTS	425988	446703	20715	4.9	4264978	5126948	861970	20.2

1/PROVISIONAL

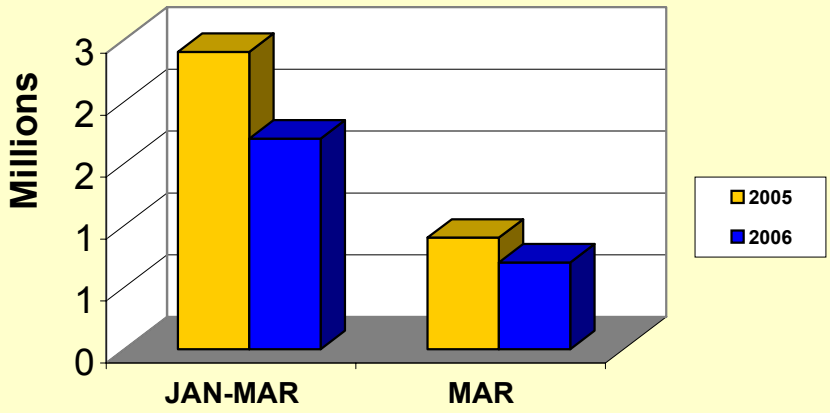
MAJOR TRADITIONALS (VOLUME, VALUE, PRICE)

	MAR	MAR1/	CHANGE	%CHANGE	APR-MAR	APR-MAR1/	CHANGE	%CHANGE
	2004/2005	2005/2006			2004/2005	2005/2006		
BAUXITE								
Volume ('000 tonnes)	352.0	433.4	81.4	23.1	3409.3	4103.4	694.1	20.4
Value (U.S. \$000)	8567.0	10796.0	2229.0	26.0	82031.0	100506.0	18475.0	22.5
Price (US \$/tonne)	24.3	24.9	0.6	2.3	24.1	24.5	0.4	1.8
ALUMINA								
Volume ('000 tonnes)	325.3	365.7	40.4	12.4	3962.1	4184.0	221.9	5.6
Value (U.S. \$000)	71536.0	90327.0	18791.0	26.3	825055.0	950442.8	125387.8	15.2
Price (US \$/tonne)	219.9	247.0	27.1	12.3	208.2	227.2	18.9	9.1
SUGAR								
Volume ('000 tonnes)	21.0	27.5	6.5	31.0	135.5	138.8	3.3	2.4
Value (U.S. \$000)	14285.0	17210.0	2925.0	20.5	87023.0	89968.0	2945.0	3.4
Price (US \$/tonne)	679.6	625.2	-54.4	-8.0	642.4	648.3	5.9	0.9
BANANAS								
Volume ('000 tonnes)	0.0	2.5	2.5	-	18.1	19.4	1.3	7.1
Value (U.S. \$000)	0.0	1058.0	1058.0	-	8172.0	7683.0	-489.0	-6.0
Price (US \$/tonne)	0.0	426.8	426.8	-	450.8	395.7	-55.1	-12.2

1/PROVISIONAL

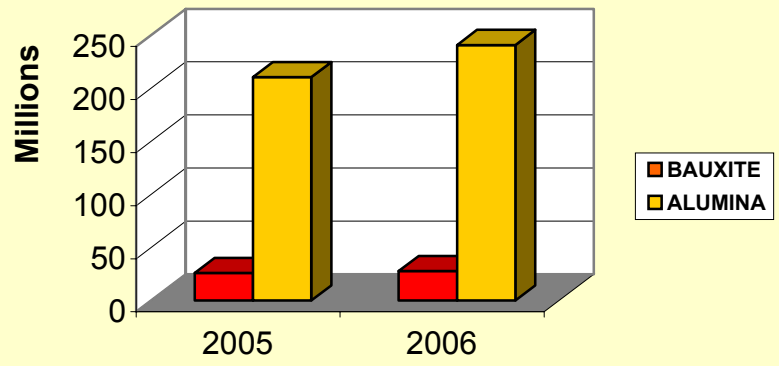
External Sector Statistics Unit.
2006 August

**GARMENTS EXPORT US\$Mn
JAN-MAR**



BAUXITE						
	2005 Volumes (Tonnes)	2006 Volumes (Tonnes)	% Change	2005 Values (\$ 000')	2006 Values (\$ 000')	% Change
JANUARY	393019.0	349982.0	-11.0	9566.0	8869.0	-7.3
FEBRUARY	313182.0	319483.0	2.0	7623.0	8096.0	6.2
MARCH	351972.0	433386.0	23.1	8567.0	10796.0	26.0
JAN-MAR	1058173.0	1102851.0	4.2	25756.0	27761.0	7.8
ALUMINA						
	2005 Volumes (Tonnes)	2006 Volumes (Tonnes)	% Change	2005 Values (\$ 000')	2006 Values (\$ 000')	% Change
JANUARY	358434.0	273675.0	-23.6	78820.0	67592.0	-14.2
FEBRUARY	273943.0	335390.0	22.4	60240.0	82835.0	37.5
MARCH	325312.0	365727.0	12.4	71536.0	90327.0	26.3
JAN-MAR	957689.0	974792.0	1.8	210596.0	240754.0	14.3

**BAUXITE/ALUMINA US\$Mn
JAN - MAR**



EXPORTS OF SELECTED NON-TRADITIONAL DOMESTIC COMMODITIES US\$ 000

	2005	2006	%	2005	2006	%	2004/2005	2005/2006	%
	JAN-MAR	JAN-MAR 1/		MAR	MAR 1/		APR-MAR	APR-MAR 1/	
COMMODITIES									
FOOD									

ACKEE	2714	1133	-58.3	1580	544	-65.6	9604	8023	-16.5
FISH	1429	2345	64.1	634	1211	91.0	9863	10779	9.3
BREADFRUIT	150	172	14.7	65	72	10.8	745	767	3.0
CUCUMBERS	3	0	-100.0	1	0	-100.0	10	7	-30.0
PUMPKINS	105	53	-49.5	29	36	24.1	273	221	-19.0
OTHER VEGETABLES	30	43	43.3	13	17	30.8	277	290	4.7
DASHEEN	227	323	42.3	76	101	32.9	743	839	12.9
CASSAVA	0	0	0.0	0	0	0.0	0	0	0.0
SWEET POTATOES	493	459	-6.9	192	178	-7.3	1952	1918	-1.7
YAMS	3363	3569	6.1	1342	1266	-5.7	15258	15464	1.4
AVOCADOES	0	0	0.0	0	0	0.0	276	276	0.0
MANGOES	148	72	-51.4	92	62	-32.6	921	845	-8.3
OTHER ROOTS	122	156	27.9	39	52	33.3	502	536	6.8
PAPAYAS	416	485	16.6	198	250	26.3	2043	2112	3.4
MELON	0	0	0.0	0	0	0.0	0	0	0.0
Total	9200	8810	-4.2	4261	3789	-11.1	42467	42077	-0.9
CRUDE MATERIALS									

Cut Flowers	9	0	-100.0	2	0	-100.0	19	10	-47.4
Live Plts.&Foliage	12	25	108.3	10	9	-10.0	26	25	-3.8
Orchids	5	4	-20.0	2	1	-50.0	10	9	-10.0
Total	26	29	11.5	14	10	-28.6	55	44	-20.0
1/PROVISIONAL									
2006 July									

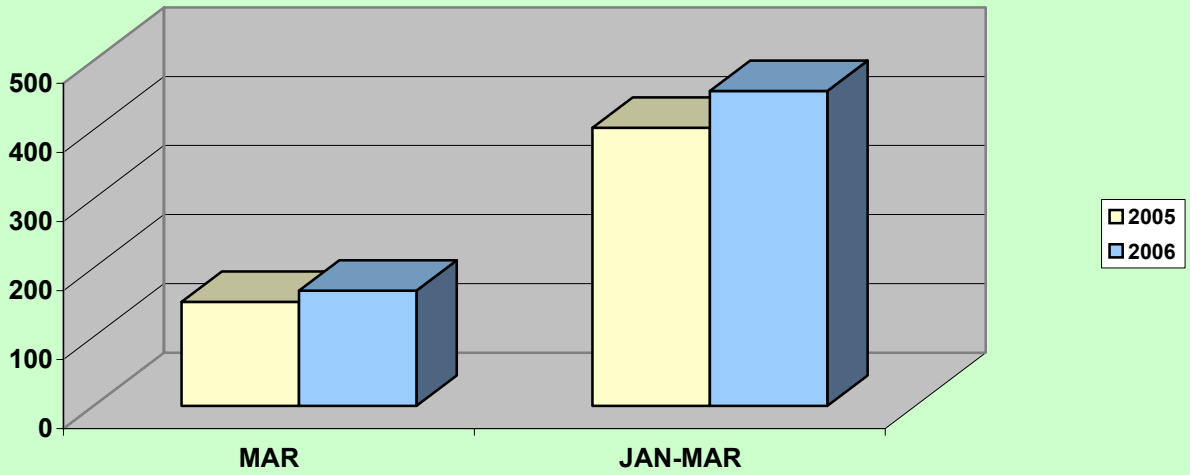
TOURISM STATISTICS

	2005 MAR	2006 MAR 1/	% CHNG	2005 JAN-MAR	2006 JAN-MAR /	% CHNG
TOTAL STOP-OVERS	155103	167439	8.0	394969	436562	10.5
FOREIGN NAT. STOP-OVERS(# of)	147180	160261	8.9	377041	417770	10.8
Long Stay	143020	155744	8.9	364120	404861	11.2
Short Stay	4160	4517	8.6	12921	12909	-0.1
NON-RES. JAMAICANS	7923	7178	-9.4	17928	18792	4.8
CRUISE PASSENGERS	150871	153972	2.1	374973	406302	8.4
TOTAL TOURISTS	305974	321411	5.0	769942	842864	9.5
ARMED FORCES	0	0	-	0	0	-
TOTAL VISITORS	305974	321411	5.0	769942	842864	9.5
AVG.LENGTH.OF STAY	8.5	8.5	0.0	9.0	9.0	-0.2
ESTM.EXPD.(US\$MN)	150.5	166.6	10.8	402.8	455.9	13.2
Avg. Est.Exp/per person/per day (US\$)						
Stop-Overs	107.3	110.5	2.9	107.3	110.5	2.9
A.forces/Cruise	81.4	82.0	0.7	81.4	82.0	0.7

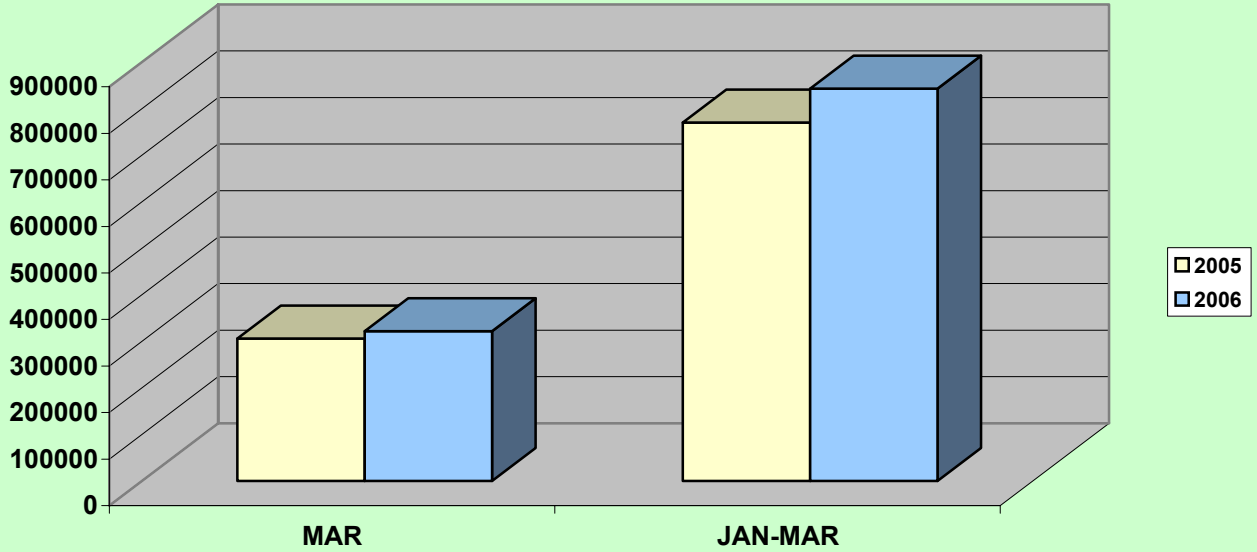
1/ Provisional

*External Sector Statistics Unit
Economic Information & Publications Dept.
2006 July*

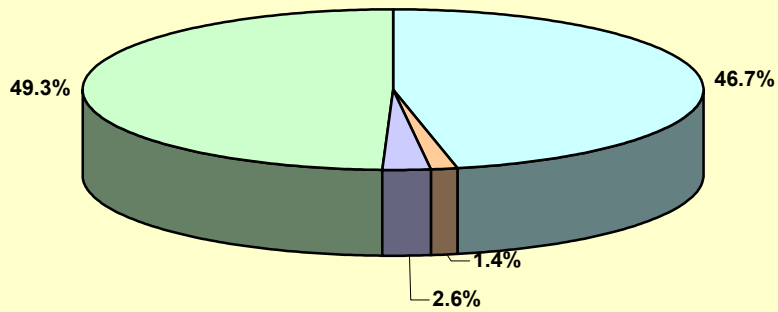
Estimated Tourist Expenditure (US\$mn)



Jamaica: Total Visitors

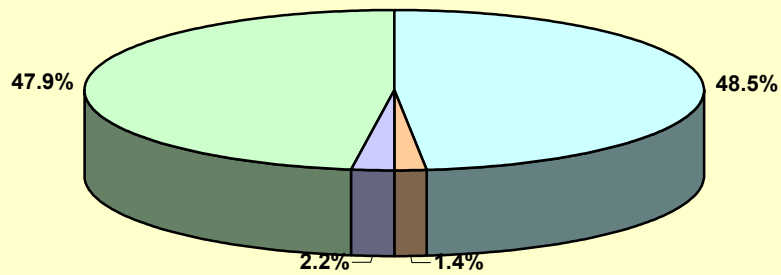


Composition of Visitors March 2005



For. Nat. Long Stay For. Nat. Short Stay Non-Res. Jamaicans Cruise Passengers

Composition of Visitors March 2006



For. Nat. Long Stay For. Nat. Short Stay Non-Res. Jamaicans Cruise Passengers

TOURISM STATISTICS

	2004/2005	2005/2006		%
	APR-MAR	APR-MAR 1/	CHNG	CHNG
TOTAL STOP-OVERS	1443670	1520256	76586	5.3
FOREIGN NAT. STOP-OVERS	1353715	1427725	74010	5.5
Long Stay	1288089	1382300	94211	7.3
Short Stay	65626	45425	-20201	-30.8
NON-RES. JAMAICANS	89955	92531	2576	2.9
CRUISE PASSENGERS	1105479	1167172	61693	5.6
TOTAL TOURISTS	2549149	2687428	138279	5.4
ARMED FORCES	0	0	0	-
TOTAL VISITORS	2549149	2687428	138279	5.4
AVG.LENGTH.OF STAY	9.9	9.8	-0.1	-1.1
ESTM.EXPD.(US\$MN)	1457.1	1588.8	131.7	9.0
Avg. Est.Exp/per person/per day (US\$)				
Stop-Overs	96.9	103.1	6.2	6.4
A.forces/Cruise	85.9	85.8	-0.1	-0.1

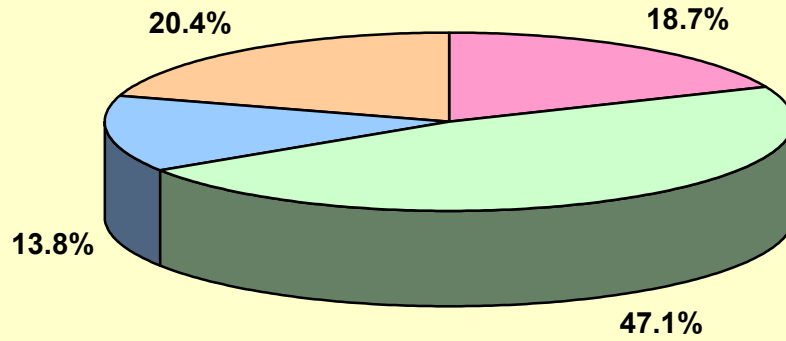
1/Provisional

*External Sector Statistics Unit
Economic Information & Publications Dept.*

SOURCES OF PRIVATE TRANSFERS								
(US\$Mn)								
	2005	2006			2004/2005	2005/2006		
	MAR	MAR 1/	CHNG	%CHNG	APR - MAR	APR - MAR 1/	CHNG	%CHNG
TOTAL INFLOWS	176.29	160.89	-15.40	-8.73	1828.64	1828.56	-0.08	0.00
COMMERCIAL BANKS	32.99	34.66	1.67	5.06	360.54	364.84	4.30	1.19
REMITTANCE COMPS.	83.07	86.55	3.48	4.19	809.50	978.55	169.05	20.88
POST OFFICE	0.11	0.11	0.00	0.00	1.23	1.24	0.01	0.82
BUILDING SOCIETIES	24.35	26.17	1.82	7.46	327.43	302.58	-24.85	-7.59
OTHER	35.77	13.41	-22.36	-62.51	329.95	181.35	-148.60	-45.04

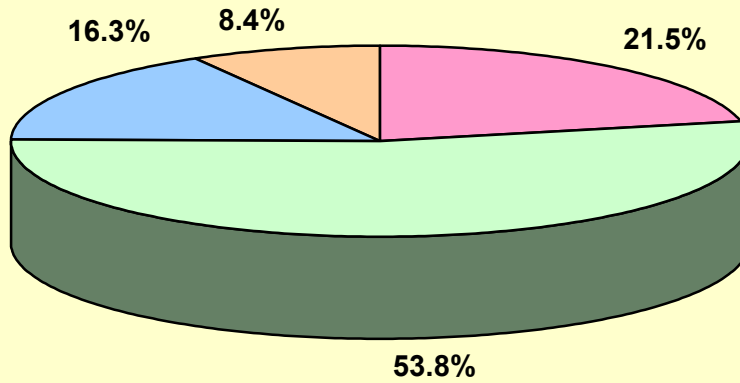
SOURCES OF PRIVATE TRANSFERS				
(US\$Mn)				
	2004/2005	2005/2006		
	APR - MAR	APR - MAR 1/	CHNG	%CHNG
TOTAL INFLOWS	1828.64	1828.56	-0.08	0.00
COMMERCIAL BANKS	360.54	364.84	4.30	1.19
REMITTANCE COMPS.	809.50	978.55	169.05	20.88
POST OFFICE	1.23	1.24	0.01	0.82
BUILDING SOCIETIES	327.43	302.58	-24.85	-7.59
OTHER	329.95	181.35	-148.60	-45.04

Sources of Private Transfers (US\$m)
March 2005



Commercial Banks Remittance Companies Building Societies Other

Sources of Private Transfers (US\$m)
March 2006



Commercial Banks Remittance Companies Building Societies Other

Balance of Payments of Jamaica

US\$Mn.

	Jan-Mar 2005	Jan-Mar 1/ 2006	Change
1. Current Account	-168.7	-218.1	-49.4
A. Goods Balance	-601.2	-700.3	-99.1
Exports	381.2	518.1	136.9
Imports	982.4	1218.4	236.0
B. Services Balance	200.8	240.4	39.6
Transportation	-46.1	-60.1	-14.0
Travel	352.2	407.5	55.3
Other Services	-105.3	-107.0	-1.7
C. Income	-164.1	-162.2	1.9
Compensation of employees	8.5	9.9	1.4
Investment Income	-172.6	-172.1	0.5
D. Current Transfers	395.8	404.0	8.2
Official	42.4	35.7	-6.7
Private	353.4	368.3	14.9
2. Capital & Financial Account	168.7	218.1	49.4
A. Capital Account	-0.9	-1.8	-0.9
Capital Transfers	-0.9	-1.8	-0.9
Official	0.1	0.0	-0.1
Private	-1.0	-1.8	-0.8
Acq/dis. of non-produced non-fin. assets	0.0	0.0	0.0
B. Financial Account	169.6	219.9	50.3
Other Official Investment (incl. Govt. Reserves)	13.4	-38.8	-52.2
Other Private Investment (incl. Errors & omissions)	199.3	249.5	50.2
Reserves	-43.1	9.2	

1/Provisional

External Sector Statistics Unit

Economic Information & Publications Dept.

2006 July

Balance of Payments of Jamaica			
US\$Mn.			
	Jan-Mar 2005	Jan-Mar 1/ 2006	Change
Services (Net)	200.8	240.4	39.6
Inflows	618.4	683.9	65.5
Outflows	417.6	443.5	25.9
Transportation	-46.1	-60.1	-14.0
Inflows	132.9	145.3	12.4
Outflows	179.0	205.4	26.4
Travel	352.2	407.5	55.3
Inflows	402.8	455.9	53.1
Outflows	50.6	48.4	-2.2
Other Services	-105.3	-107.0	-1.7
Inflows	82.7	82.7	0.0
Outflows	188.0	189.7	1.7
Income (Net)	-164.1	-162.2	1.9
Compensation of Employees	8.5	9.9	1.4
Inflows	21.5	22.9	1.4
Outflows	13.0	13.0	0.0
Investment Income	-172.6	-172.1	0.5
Inflows	41.5	50.4	8.9
Outflows	214.1	222.5	8.4
- Bank of Jamaica	0.1	0.1	0.0
- Government Direct	81.3	81.3	0.0
- Government Guaranteed	0.3	0.5	0.3
- Private	0.0	0.0	0.0
- Direct Investment	100.4	108.6	8.2
- Other	32.0	32.0	0.0
Current Transfers (Net)	395.8	404.0	8.2
Inflows	481.3	490.8	9.5
Outflows	85.5	86.8	1.3
Official	42.4	35.7	-6.7
Inflows	43.6	36.9	-6.7
Outflows	1.2	1.2	0.0
Private	353.4	368.3	14.9
Inflows	437.7	453.9	16.2
Outflows	84.3	85.6	1.3

	Balance of Payments of Jamaica		
	US\$Mn.		
	Jan-Mar 2005	Jan-Mar 1/ 2006	Change
Capital & Financial Account (Net)	168.7	218.1	49.4
Capital Account (Net)	-0.9	-1.8	-0.9
1. Capital Transfers	-0.9	-1.8	-0.9
Official	0.1	0.0	-0.1
Inflows	0.1	0.0	-0.1
Outflows	0.0	0.0	0.0
Private	-1.0	-1.8	-0.8
Inflows	5.3	4.5	-0.8
Outflows	6.3	6.3	0.0
2. Acq/disp. of non-produced non-fin. assets	0.0	0.0	0.0
Inflows	0.0	0.0	0.0
Outflows	0.0	0.0	0.0
Financial Account (Net)	169.6	219.9	50.3
Other Official Investments (incl. Govt. Reserves)	13.4	-38.8	-52.2
Inflows	80.3	302.3	222.0
Outflows	66.9	341.1	274.2
Other Private Investments (incl.errors & omissions)	199.3	249.5	50.2
Inflows	729.4	972.8	243.4
Outflows	530.1	723.3	193.2
Reserves	-43.1	9.2	

	Balance of Payments of Jamaica			Balance of Payments of Jamaica		
	US\$Mn.			US\$Mn.		
	Mar 2005	Mar 1/ 2006	Change	Apr-Mar 2004/05	Apr-Mar 1/ 2005/06	Change
1. Current Account	-43.9	14.4	58.3	-643.7	-1128.3	-484.6
A. Goods Balance	-240.8	-186.2	54.6	-2123.8	-2680.4	-556.6
Exports	132.2	203.3	71.1	1566.8	1801.2	234.4
Imports	373.0	389.5	16.5	3690.6	4481.6	791.0
B. Services Balance	81.3	97.1	15.8	570.3	639.7	69.4
Transportation	-13.8	-16.1	-2.3	-182.3	-287.8	-105.5
Travel	133.8	150.9	17.1	1178.5	1351.0	172.5
Other Services	-38.7	-37.7	1.0	-425.9	-423.5	2.4
C. Income	-27.5	-38.8	-11.3	-598.5	-674.2	-75.7
Compensation of employees	4.3	5.0	0.7	88.2	89.8	1.6
Investment Income	-31.8	-43.8	-12.0	-686.7	-764.0	-77.3
D. Current Transfers	143.1	142.3	-0.8	1508.3	1586.6	78.3
Official	16.9	12.0	-4.9	174.8	130.3	-44.5
Private	126.2	130.3	4.1	1333.5	1456.3	122.8
2. Capital & Financial Account	43.9	-14.4	-58.3	643.7	1128.3	484.6
A. Capital Account	-0.5	-0.4	0.1	1.7	-3.6	-5.3
Capital Transfers	-0.5	-0.4	0.1	1.7	-3.6	-5.3
Official	0.0	0.0	0.0	10.5	0.2	-10.3
Private	-0.5	-0.4	0.1	-8.8	-3.8	5.0
Acq/dis. of non-produced non-fin. assets	0.0	0.0	0.0	0.0	0.0	0.0
B. Financial Account	44.4	-14.0	-58.4	642.0	1131.9	489.9
Other Official Investment (incl. Govt. Reserves)	9.6	-17.9	-27.5	235.1	348.0	112.9
Other Private Investment (incl. Errors & omissions)	105.3	57.8	-47.5	739.9	960.5	220.6
Reserves	-70.5	-53.9	16.6	-333.0	-176.6	

1/Provisional

External Sector Statistics Unit
Economic Information & Publications Dept.
2006 July

	Balance of Payments of Jamaica US\$Mn.			Balance of Payments of Jamaica US\$Mn.		
	Mar 2005	Mar 1/ 2006	Change	Apr-Mar 2004/05	Apr-Mar 1/ 2005/06	Change
Services (Net)	81.3	97.1	15.8	570.3	639.8	69.5
Inflows	230.5	249.3	18.8	2292.0	2395.1	103.1
Outflows	149.2	152.2	3.0	1721.7	1755.3	33.6
Transportation	-13.8	-16.1	-2.3	-182.3	-287.8	-105.5
Inflows	52.8	55.4	2.6	484.7	463.6	-21.1
Outflows	66.6	71.5	4.9	667.0	751.4	84.4
Travel	133.8	150.9	17.1	1178.5	1351.0	172.5
Inflows	150.5	166.6	16.1	1457.2	1598.1	140.9
Outflows	16.7	15.7	-1.0	278.7	247.1	-31.6
Other Services	-38.7	-37.7	1.0	-425.9	-423.5	2.4
Inflows	27.2	27.3	0.1	350.1	333.3	-16.8
Outflows	65.9	65.0	-0.9	776.0	756.8	-19.2
Income (Net)	-27.5	-38.8	-11.3	-598.5	-674.2	-75.7
Compensation of Employees	4.3	5.0	0.7	88.2	89.8	1.6
Inflows	8.4	9.1	0.7	140.7	141.6	0.9
Outflows	4.1	4.1	0.0	52.5	51.8	-0.7
Investment Income	-31.8	-43.8	-12.0	-686.7	-764.0	-77.3
Inflows	13.8	17.4	3.6	143.9	196.7	52.8
Outflows	45.6	61.2	15.6	830.6	960.7	130.1
- Bank of Jamaica	0.1	0.1	0.0	0.4	0.7	0.3
- Government Direct	12.5	13.3	0.7	327.9	352.5	24.6
- Government Guaranteed	0.3	0.5	0.3	1.8	17.8	16.1
- Private	0.0	0.0	0.0	0.0	0.0	0.0
- Direct Investment	22.0	36.7	14.6	365.2	461.8	96.6
- Other	10.7	10.7	0.0	135.4	128.0	-7.4
Current Transfers (Net)	143.1	142.3	-0.8	1508.3	1586.6	78.3
Inflows	174.5	173.3	-1.2	1950.0	1945.1	-4.9
Outflows	31.4	31.0	-0.4	441.7	358.5	-83.2
Official	16.9	12.0	-4.9	174.8	130.3	-44.5
Inflows	17.3	12.4	-4.9	178.7	135.2	-43.5
Outflows	0.4	0.4	0.0	3.9	4.9	1.0
Private	126.2	130.3	4.1	1333.5	1456.3	122.8
Inflows	157.2	160.9	3.7	1771.3	1809.9	38.6
Outflows	31.0	30.6	-0.4	437.8	353.6	-84.2

	Balance of Payments of Jamaica US\$Mn.			Balance of Payments of Jamaica US\$Mn.		
	Mar 2005	Mar 1/ 2006	Change	Apr-Mar 2004/05	Apr-Mar 1/ 2005/06	Change
Capital & Financial Account (Net)	43.9	-14.4	-58.3	643.7	1128.3	484.6
Capital Account (Net)	-0.5	-0.4	0.1	1.7	-3.6	-5.3
1. Capital Transfers	-0.5	-0.4	0.1	1.7	-3.6	-5.3
Official	0.0	0.0	0.0	10.5	0.2	-10.3
Inflows	0.0	0.0	0.0	10.5	0.2	-10.3
Outflows	0.0	0.0	0.0	0.0	0.0	0.0
Private	-0.5	-0.4	0.1	-8.8	-3.8	5.0
Inflows	1.6	1.7	0.1	22.7	21.4	-1.3
Outflows	2.1	2.1	0.0	31.5	25.2	-6.3
2. Acq/disp. of non-produced non-fin. assets	0.0	0.0	0.0	0.0	0.0	0.0
Inflows	0.0	0.0	0.0	0.0	0.0	0.0
Outflows	0.0	0.0	0.0	0.0	0.0	0.0
Financial Account (Net)	44.4	-14.0	-58.4	642.0	1131.8	489.8
Other Official Investments (incl. Govt. Reserves)	9.6	-17.9	-27.5	235.1	348.0	112.9
Inflows	39.1	25.2	-13.9	790.6	1655.8	865.2
Outflows	29.5	43.1	13.6	555.5	1307.8	752.3
Other Private Investments (incl.errors & omissions)	105.3	57.8	-47.5	739.9	960.4	220.5
Inflows	284.8	279.5	-5.3	2905.1	3566.3	661.2
Outflows	179.5	221.7	42.2	2165.2	2605.9	440.7
Reserves	-70.5	-53.9	16.6	-333.0	-176.6	

**BALANCE OF PAYMENTS OF JAMAICA
US\$MN**

	Jan-Dec 2004	Jan-Dec 1/ 2005	Change	Feb 1/ 2005	Feb 1/ 2006	Change	Mar 1/ 2005	Mar 1/ 2006	Change	Jan-Mar 1/ 2005	Jan-Mar 1/ 2006	Change
1. Current Account	-509.4	-1078.7	-569.3	-31.8	-127.1	-95.3	-43.9	14.4	58.3	-168.7	-218.1	-49.4
A. Goods Balance	-1944.5	-2581.3	-636.8	-145.1	-249.9	-104.8	-240.8	-186.2	54.6	-601.2	-700.3	-99.1
Exports	1601.6	1664.3	62.7	129.9	170.1	40.2	132.2	203.3	71.1	381.2	518.1	136.9
Imports	3546.1	4245.6	699.5	275.0	420.0	145.0	373.0	389.5	16.5	982.4	1218.4	236.0
B. Services Balance	571.7	600.1	28.4	64.3	69.6	5.3	81.3	97.1	15.8	200.8	240.4	39.6
Transportation	-150.3	-273.8	-123.5	-12.8	-25.0	-12.2	-13.8	-16.1	-2.3	-46.1	-60.1	-14.0
Travel	1151.5	1295.7	144.2	109.4	130.7	21.3	133.8	150.9	17.1	352.2	407.5	55.3
Other Services	-429.5	-421.8	7.7	-32.3	-36.1	-3.8	-38.7	-37.7	1.0	-105.3	-107.0	-1.7
C. Income	-582.7	-675.9	-93.2	-76.8	-79.2	-2.4	-27.5	-38.8	-11.3	-164.1	-162.2	1.9
Compensation of employees	84.5	88.5	4.0	0.8	0.7	-0.1	4.3	5.0	0.7	8.5	9.9	1.4
Investment Income	-667.2	-764.4	-97.2	-77.6	-79.9	-2.3	-31.8	-43.8	-12.0	-172.6	-172.1	0.5
D. Current Transfers	1446.1	1578.4	132.3	125.8	132.4	6.6	143.1	142.3	-0.8	395.8	404.0	8.2
General Government	159.9	137.0	-22.9	12.6	12.0	-0.6	16.9	12.0	-4.9	42.4	35.7	-6.7
Other Sector	1286.2	1441.4	155.2	113.2	120.4	7.2	126.2	130.3	4.1	353.4	368.3	14.9
2. Capital & Financial Account	509.4	1078.7	569.3	31.8	127.1	95.3	43.9	-14.4	-58.3	168.7	218.1	49.4
A. Capital Account	2.2	-2.7	-4.9	0.1	-0.8	-0.9	-0.5	-0.4	0.1	-0.9	-1.8	-0.9
Capital Transfers	2.2	-2.7	-4.9	0.1	-0.8	-0.9	-0.5	-0.4	0.1	-0.9	-1.8	-0.9
General Government	13.8	0.3	-13.5	0.1	0.0	-0.1	0.0	0.0	0.0	0.1	0.0	
Other Sector	-11.6	-3.0	8.6	0.0	-0.8	-0.8	-0.5	-0.4	0.1	-1.0	-1.8	-0.8
Acq/dis. of non-produced non-fin. assets	0.0	0.0	0.0	0.0	0.0	0.0	0.0	0.0	0.0	0.0	0.0	0.0
B. Financial Account	507.2	1081.4	574.2	31.7	127.9	96.2	44.4	-14.0	-58.4	169.6	219.9	50.3
Official Investment (incl. Govt. Reserves)	507.5	409.0	-98.5	20.8	-21.7	-42.5	9.6	-17.9	-27.5	13.4	-38.8	-52.2
Central Government	479.1	115.0	-364.1	-5.7	230.8	236.5	-24.5	-17.2	7.4	-48.4	202.9	251.3
Other Official Investment	28.4	294.0	265.6	26.5	-252.5	-279.0	34.1	-0.7	-34.9	61.8	-241.7	-303.5
Private Investment (incl. errors & omissions)	693.3	901.3	208.0	-5.6	80.4	86.0	105.3	57.8	-47.5	199.3	249.5	50.2
Reserves	-693.6	-228.9		16.5	69.2		-70.5	-53.9		-43.1	9.2	

1/Provisional

BALANCE OF PAYMENTS OF JAMAICA

US\$MN

	Apr-Dec 2004/05	Apr-Dec 1/ 2005/06	Change	Feb 2004/05	Feb 1/ 2005/06	Change	Apr-Feb 2004/05	Apr-Feb 1/ 2005/06	Change	Mar 1/ 2004/05	Mar 1/ 2005/06	Change	Apr-Mar 1/ 2004/05	Apr-Mar 1/ 2005/06	Change
1. Current Account	-475.0	-910.0	-435.0	-31.8	-127.1	-95.3	-599.8	-1142.7	-542.9	-43.9	14.4	58.3	-643.7	-1128.3	-484.6
A. Goods Balance	-1522.6	-1980.1	-457.5	-145.1	-249.9	-104.8	-1883.0	-2494.2	-611.2	-240.8	-186.2	54.6	-2123.8	-2680.4	-556.6
Exports	1185.6	1283.1	97.5	129.9	170.1	40.2	1434.6	1597.9	163.3	132.2	203.3	71.1	1566.8	1801.2	234.4
Imports	2708.2	3263.2	555.0	275.0	420.0	145.0	3317.6	4092.1	774.5	373.0	389.5	16.5	3690.6	4481.6	791.0
B. Services Balance	369.5	399.3	29.8	64.3	69.6	5.3	489.0	542.5	53.5	81.3	97.1	15.8	570.3	639.7	69.4
Transportation	-136.2	-227.7	-91.5	-12.8	-25.0	-12.2	-168.5	-271.7	-103.2	-13.8	-16.1	-2.3	-182.3	-287.8	-105.5
Travel	826.3	943.5	117.2	109.4	130.7	21.3	1044.7	1200.1	155.4	133.8	150.9	17.1	1178.5	1351.0	172.5
Other Services	-320.6	-316.5	4.1	-32.3	-36.1	-3.8	-387.2	-385.9	1.3	-38.7	-37.7	1.0	-425.9	-423.5	2.4
C. Income	-434.4	-511.8	-77.4	-76.8	-79.2	-2.4	-571.0	-635.3	-64.3	-27.5	-38.8	-11.3	-598.5	-674.2	-75.7
Compensation of employees	79.7	80.0	0.3	0.8	0.7	-0.1	83.9	84.9	1.0	4.3	5.0	0.7	88.2	89.8	1.6
Investment Income	-514.1	-591.8	-77.7	-77.6	-79.9	-2.3	-654.9	-720.2	-65.3	-31.8	-43.8	-12.0	-686.7	-764.0	-77.3
D. Current Transfers	1112.5	1182.6	70.1	125.8	132.4	6.6	1365.2	1444.3	79.1	143.1	142.3	-0.8	1508.3	1586.6	78.3
General Government	132.4	94.6	-37.8	12.6	12.0	-0.6	157.9	118.3	-39.6	16.9	12.0	-4.9	174.8	130.3	-44.5
Other Sector	980.1	1088.0	107.9	113.2	120.4	7.2	1207.3	1326.0	118.7	126.2	130.3	4.1	1333.5	1456.3	122.8
2. Capital & Financial Account	696.7	1305.6	608.9	31.8	127.1	95.3	825.3	1518.6	693.3	43.9	-14.4	-58.3	878.8	1476.3	597.5
A. Capital Account	2.6	-1.8	-4.4	0.1	-0.8	-0.9	2.2	-3.2	-5.4	-0.5	-0.4	0.1	1.7	-3.6	-5.3
Capital Transfers	2.6	-1.8	-4.4	0.1	-0.8	-0.9	2.2	-3.2	-5.4	-0.5	-0.4	0.1	1.7	-3.6	-5.3
General Government	10.4	0.2	-10.2	0.1	0.0	-0.1	10.5	0.2	-10.3	0.0	0.0	0.0	10.5	0.2	-10.3
Other Sector	-7.8	-2.0	5.8	0.0	-0.8	-0.8	-8.3	-3.4	4.9	-0.5	-0.4	0.1	-8.8	-3.8	5.0
Acq/disp. of non-produced non-fin. assets	0.0	0.0	0.0	0.0	0.0	0.0	0.0	0.0	0.0	0.0	0.0	0.0	0.0	0.0	0.0
B. Financial Account	694.1	1307.4	613.3	31.7	127.9	96.2	823.1	1521.8	698.7	44.4	-14.0	-58.4	877.1	1479.9	602.8
Other Official Investment (incl. Govt. Reserves)	221.7	395.6	173.9	20.8	-21.7	-42.5	225.5	375.9	150.4	9.6	-17.9	-27.5	235.1	348.0	112.9
Central Government	225.7	-124.4	-350.1	-5.7	230.8	236.5	625.2	96.8	-528.4	-24.5	-17.2	7.4	600.7	69.7	-531.0
Other Official Investment	-4.0	520.0	524.0	26.5	-252.5	-279.0	-399.7	279.1	678.8	34.1	-0.7	-34.9	-365.6	278.3	643.9
Private Investment (incl. errors & omissions)	540.6	702.0	161.4	-5.6	80.4	86.0	634.6	892.7	258.1	105.3	57.8	-47.5	739.9	960.5	220.6
Reserves	-289.9	-185.8		16.5	69.2		-262.5	-122.7		-70.5	-53.9		-333.0	-176.6	

1/Provisional

BALANCE OF PAYMENTS OF JAMAICA

US\$MN

	Jan-Dec 1999	Jan-Dec 2000	Jan-Dec 2001	Jan-Dec 2002	Jan-Dec 2003	Jan-Dec 2004	Jan-Dec 1/ 2005
1. Current Account	-216.3	-367.4	-757.3	-1074.4	-772.6	-509.4	-1078.7
A. Goods Balance	-1186.5	-1441.5	-1618.2	-1870.5	-1942.6	-1944.5	-2581.3
Exports	1499.1	1562.8	1454.4	1309.1	1385.6	1601.6	1664.3
Imports	2685.6	3004.3	3072.6	3179.6	3328.2	3546.1	4245.6
B. Services Balance	655.4	603.2	383.1	314.7	552.3	571.7	600.1
Transportation	-233.6	-256.6	-256.2	-245.6	-143.6	-150.3	-273.8
Travel	1052.4	1123.9	1026.2	950.3	1102.7	1151.5	1295.7
Other Services	-163.4	-264.1	-386.9	-390.0	-406.7	-429.5	-421.8
C. Income	-332.5	-349.9	-437.8	-605.5	-571.4	-582.7	-675.9
Compensation of employees	70.3	67.4	74.6	82.1	70.7	84.5	88.5
Investment Income	-402.8	-417.3	-512.4	-687.6	-642.1	-667.2	-764.4
D. Current Transfers	647.3	820.8	915.6	1086.9	1189.1	1446.1	1578.4
General Government	45.8	147.9	119.7	107.6	105.2	159.9	137.0
Other Sector	601.5	672.9	795.9	979.3	1083.9	1286.2	1441.4
2. Capital & Financial Account	216.3	367.4	757.3	1074.4	772.6	509.4	1078.7
A. Capital Account	13.1	2.2	-23.6	-16.9	0.1	2.2	-2.7
Capital Transfers	13.1	2.2	-23.6	-16.9	-0.3	2.2	-2.7
General Government	4.1	15.6	2.2	0.2	0.1	13.8	0.3
Other Sector	9.0	-13.4	-25.8	-17.1	-0.4	-11.6	-3.0
B. Financial Account	203.2	365.2	780.9	1091.3	772.5	507.2	1081.4
Other Official Investment (incl. Govt. Reserves)	-299.5	429.5	626.0	101.2	-366.4	507.5	409.0
Central Government	-331.4	383.7	653.4	80.7	-362.5	479.1	115.0
Other Official Investment	31.9	45.8	-27.4	20.5	-3.9	28.4	294.0
Private Investment (incl. errors & omissions)	370.9	455.0	1026.2	746.4	706.8	693.3	901.3
Reserves	131.8	-519.3	-871.3	243.7	432.1	-693.6	-228.9

BALANCE OF PAYMENTS OF JAMAICA							
US\$MN							
	Apr-Mar	Apr-Mar	Apr-Mar	Apr-Mar	Apr-Mar	Apr-Mar 1/	Apr-Mar 1/
	1999/00	2000/01	2001/02	2002/03	2003/04	2004/05	2005/06
1. Current Account	-304.1	-497.2	-753.2	-1161.9	-561.9	-643.7	-1128.3
A. Goods Balance	-1251.9	-1541.7	-1577.3	-2025.8	-1832.0	-2123.8	-2680.4
Exports	1557.7	1517.7	1423.7	1313.6	1467.4	1566.8	1801.2
Imports	2809.6	3059.4	3001.0	3339.4	3299.3	3690.6	4481.6
B. Services Balance	622.4	592.7	323.2	367.8	596.5	570.3	639.7
Transportation	-244.1	-253.6	-253.7	-226.6	-128.0	-182.3	-287.8
Travel	1058.3	1149.6	955.6	985.7	1144.6	1178.5	1351.0
Other Services	-191.8	-303.3	-378.7	-391.3	-420.1	-425.9	-423.5
C. Income	-369.5	-382.4	-457.6	-613.0	-565.8	-598.5	-674.2
Compensation of employees	67.7	67.4	73.4	82.8	71.9	88.2	89.8
Investment Income	-437.2	-449.8	-531.0	-695.8	-637.6	-686.7	-764.0
D. Current Transfers	694.9	834.2	958.5	1109.1	1239.4	1508.3	1586.6
General Government	70.4	141.5	116.5	108.7	106.3	174.8	130.3
Other Sector	624.5	692.7	842.0	1000.4	1133.1	1333.5	1456.3
2. Capital & Financial Account	304.1	497.2	753.2	1161.9	561.9	643.7	1128.3
A. Capital Account	12.5	-6.7	-24.2	-12.1	0.5	1.7	-3.6
Capital Transfers	12.5	-6.7	-24.2	-12.1	0.1	1.7	-3.6
General Government	9.0	10.2	0.4	0.2	3.5	10.5	0.2
Other Sector	3.5	-16.9	-24.6	-12.3	-3.4	-8.8	-3.8
B. Financial Account	291.6	503.9	777.4	1174.0	561.4	642.0	1131.9
Other Official Investment (incl. Govt. Reserves)	-70.7	328.3	583.0	-173.2	151.4	235.1	348.0
Central Government	-123.2	342.0	591.2	-223.2	142.0	600.7	69.7
Other Official Investment	52.5	-13.7	-8.2	50.0	9.4	-365.6	278.3
Private Investment (incl. errors & omissions)	484.3	758.4	849.8	745.3	638.9	739.9	960.5
Reserves	-122.0	-582.8	-655.4	601.9	-228.9	-333.0	-176.6

1/Provisional