



THE BALANCE OF PAYMENTS

STATISTICAL UPDATE

March 2005

External Sector Statistics Unit
Economic Information & Publications Department
RESEARCH AND ECONOMIC PROGRAMMING DIVISION

BANK OF JAMAICA
P.O. Box 621
Kingston, Jamaica

TABLE OF CONTENTS

	Pages
External Trade	1
Exports.....	7
Garments.....	8
Bauxite.....	10
Selected Non -Traditionals.....	12
Tourism	13
Private Transfer flows.....	17
B. O. P. Reports.....	19

EXTERNAL TRADE US\$000

	MAR 1/ 2004	MAR 2/ 2005	CHANGE	%CHANGE	JAN-MAR 1/ 2004	JAN-MAR 2/ 2005	CHANGE	%CHANGE
TOTAL GOODS EXPORTS(F.O.B)	155707	128171	-27536	-17.7	421370	366733	-54637	-13.0
TOTAL GOODS IMPORTS(C.I.F)	350963	362537	11574	3.3	960033	1020999	60966	6.4
TRADE BALANCE	-195256	-234366	-39110	-20.0	-538663	-654266	-115603	-21.5

VALUE OF TOTAL GOODS EXPORTS US\$000

	MAR 2004	MAR 2005	CHANGE	%CHANGE	JAN-MAR 2004	JAN-MAR 2005	CHANGE	%CHANGE
0.FOOD	42441	25178	-17263	-40.7	82076	58999	-23077	-28.1
1.BEVER. & TOBAC	5794	6587	793	13.7	13119	18181	5062	38.6
2.CRUDE MATS	83014	79015	-3999	-4.8	242877	231243	-11634	-4.8
3.MINERAL FUELS	1756	2025	269	15.3	6682	5152	-1530	-22.9
4.ANI. & VEG OILS	10	8	-2	-20.0	12	25	13	108.3
5.CHEMICALS	7014	2205	-4809	-68.6	21451	17805	-3646	-17.0
6.MANUF. GOODS	3974	1080	-2894	-72.8	6120	2487	-3633	-59.4
7.MACH. & TRANSP.	1529	2511	982	64.2	9168	4473	-4695	-51.2
8.MISC. MANUF	1754	1518	-236	-13.5	5426	4419	-1007	-18.6
9.MISC. COMMDS.	0	0	0	-	0	0	0	-
GENERAL MERCHANDISE EXPS.	147286	120127	-27159	-18.4	386931	342784	-44147	-11.4
FREEZONE EXPORTS	4421	3644	-777	-17.6	22439	10749	-11690	-52.1
GOODS PROCURED IN PORTS	4000	4400	400	10.0	12000	13200	1200	10.0
TOTAL GOODS EXPORTS	155707	128171	-27536	-17.7	421370	366733	-54637	-13.0

TRADITIONAL & NON-TRADITIONAL EXPORTS US\$000

	MAR 2004	MAR 2005	CHANGE	%CHANGE	JAN-MAR 2004	JAN-MAR 2005	CHANGE	%CHANGE
MAJOR TRAD. EXPORT	106188	91223	-14965	-14.1	282412	258464	-23948	-8.5
BAUXITE	9144	8567	-577	-6.3	23686	25756	2070	8.7
ALUMINA	67156	68371	1215	1.8	211538	201278	-10260	-4.9
SUGAR	28560	14285	-14275	-50.0	42546	31430	-11116	-26.1
BANANAS	1328	0	-1328	-100.0	4642	0	-4642	-100.0
OTHER TRAD. EXPORT	6743	5198	-1545	-22.9	17033	15110	-1923	-11.3
CITRUS	464	197	-267	-57.5	1259	979	-280	-22.2
COCOA	147	126	-21	-14.3	307	431	124	40.4
COFFEE	2748	1942	-806	-29.3	7792	4454	-3338	-42.8
PIMENTO	0	146	146	-	570	373	-197	-34.6
RUM	3199	2540	-659	-20.6	6680	8325	1645	24.6
GYPSUM	185	247	62	33.5	425	548	123	28.9
NON-TRAD. EXPORTS	28742	20177	-8565	-29.8	72087	61949	-10138	-14.1
RE-EXPORTS	5613	3529	-2084	-37.1	15399	7261	-8138	-52.8
GENERAL MERCHANDISE EXPS.	147286	120127	-27159	-18.4	386931	342784	-44147	-11.4
FREEZONE EXPORTS	4421	3644	-777	-17.6	22439	10749	-11690	-52.1
GOODS PROCURED IN PORTS	4000	4400	400	10.0	12000	13200	1200	10.0
TOTAL GOODS EXPORTS	155707	128171	-27536	-17.7	421370	366733	-54637	-13.0

VALUE OF GOODS IMPORTS BY S.I.T.C. US\$000

	MAR 2004	MAR 2005	CHANGE	%CHANGE	JAN-MAR 2004	JAN-MAR 2005	CHANGE	%CHANGE
0.FOOD	49803	46753	-3050	-6.1	133230	139769	6539	4.9
1.BEV. & TOBAC	4393	3725	-668	-15.2	10914	12729	1815	16.6
2.CRUDE MATS.	5846	7599	1753	30.0	14458	20824	6366	44.0
3.MIN.FUEL	89672	78665	-11007	-12.3	224496	214704	-9792	-4.4
4.ANI & VEG OIL	2905	3290	385	13.3	7268	8057	789	10.9
5.CHEMICAL	34999	41848	6849	19.6	110891	114216	3325	3.0
6.MANUF. GOOD	39454	57724	18270	46.3	111566	159709	48143	43.2
7.MACH.& TRANSP	75611	66396	-9215	-12.2	203247	204015	768	0.4
8.MISC.MAN.GOOD	35020	43087	8067	23.0	99654	106725	7071	7.1
9.MISC. COMMDS.	4581	5287	706	15.4	14769	14549	-220	-1.5
GENERAL MERCHANDISE IMPORTS	342284	354374	12090	3.5	930493.0	995297	64804	7.0
FREEZONE IMPORTS	2279	1163	-1116	-49.0	10340.0	4702	-5638	-54.5
GOODS PROCURED IN PORTS	6400	7000	600	9.4	19200.0	21000	1800	9.4
TOTAL GOODS IMPORTS	350963	362537	11574	3.3	960033.0	1020999	60966	6.4

MAJOR TRADITIONALS (VOLUME, VALUE, PRICE)

	MAR	MAR	CHANGE	%CHANGE	JAN-MAR	JAN-MAR	CHANGE	%CHANGE
	2004	2005			2004	2005		
BAUXITE								
Volume ('000 tonnes)	381.0	352.0	-29.0	-7.6	986.9	1058.2	71.2	7.2
Value (U.S. \$000)	9144.0	8567.0	-577.0	-6.3	23686.0	25756.0	2070.0	8.7
Price (US \$/tonne)	24.0	24.3	0.3	1.4	24.0	24.3	0.3	1.4
ALUMINA								
Volume ('000 tonnes)	322.8	325.3	2.6	0.8	1016.7	957.7	-59.0	-5.8
Value (U.S. \$000)	67156.0	68371.0	1215.0	1.8	211538.0	201278.0	-10260.0	-4.9
Price (US \$/tonne)	208.1	210.2	2.1	1.0	208.1	210.2	2.1	1.0
SUGAR								
Volume ('000 tonnes)	44.6	21.0	-23.6	-52.9	66.6	44.9	-21.8	-32.7
Value (U.S. \$000)	28560.0	14285.0	-14275.0	-50.0	42546.0	31430.0	-11116.0	-26.1
Price (US \$/tonne)	640.2	679.6	39.4	6.2	638.6	700.6	62.0	9.7
BANANAS								
Volume ('000 tonnes)	2.8	0.0	-2.8	-100.0	9.5	0.0	-9.5	-100.0
Value (U.S. \$000)	1328.0	0.0	-1328.0	-100.0	4642.0	0.0	-4642.0	-100.0
Price (US \$/tonne)	478.4	0.0	-478.4	-100.0	487.9	0.0	-487.9	-100.0

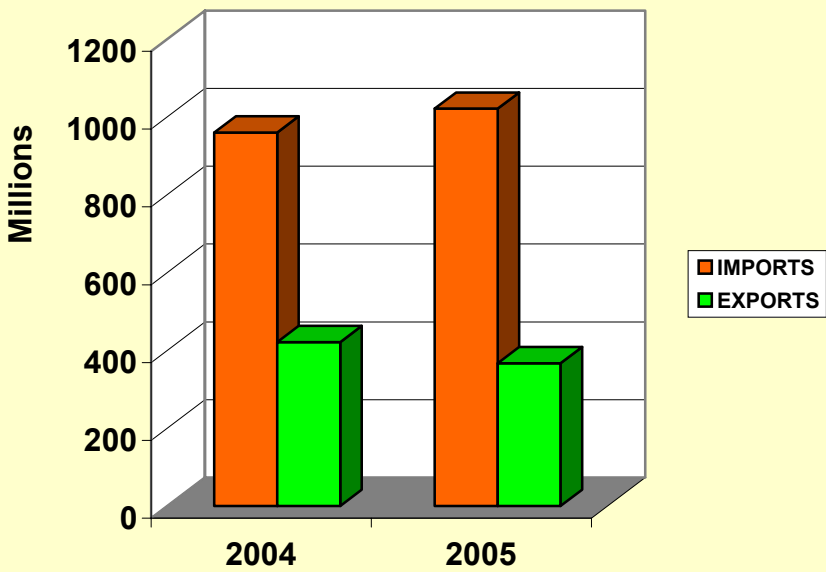
1/REVISED

2/PROVISIONAL

External Sector Statistics Unit.

July 13, 2005

VALUE OF IMPORTS & EXPORT US\$Mn
JAN - MARCH



EXTERNAL TRADE US\$000

	MAR 1/ 2004	MAR 2/ 2005	CHANGE	%CHANGE	APR-MAR 1/ 2003/2004	APR-MAR 2/ 2004/2005	CHANGE	%CHANGE
TOTAL GOODS EXPORTS(F.O.B)	155707	128171	-27536	-17.7	1472889	1531441	58552	4.0
TOTAL GOODS IMPORTS(C.I.F)	350963	362537	11574	3.3	3808024	4131600	323576	8.5
TRADE BALANCE	-195256	-234366	-39110	-20.0	-2335135	-2600159	-265024	-11.3

VALUE OF TOTAL GOODS EXPORTS US\$000

	MAR 2004	MAR 2005	CHANGE	%CHANGE	APR-MAR 2003/2004	APR-MAR 2004/2005	CHANGE	%CHANGE
O.FOOD	42441	25178	-17263	-40.7	234146	224601	-9545	-4.1
1.BEVER. & TOBAC	5794	6587	793	13.7	54495	66758	12263	22.5
2.CRUDE MATS	83014	79015	-3999	-4.8	842826	919339	76513	9.1
3.MINERAL FUELS	1756	2025	269	15.3	27753	32112	4359	15.7
4.ANI.& VEG OILS	10	8	-2	-20.0	35	72	37	105.7
5.CHEMICALS	7014	2205	-4809	-68.6	66939	73571	6632	9.9
6.MANUF. GOODS	3974	1080	-2894	-72.8	13601	10242	-3359	-24.7
7.MACH.& TRANSP.	1529	2511	982	64.2	23850	19585	-4265	-17.9
8.MISC. MANUF	1754	1518	-236	-13.5	23108	20806	-2302	-10.0
9.MISC. COMMDS.	0	0	0	-	0	0	0	-
GENERAL MERCHANDISE EXPS.	147286	120127	-27159	-18.4	1286753	1367086	80333	6.2
FREEZONE EXPORTS	4421	3644	-777	-17.6	138136	115155	-22981	-16.6
GOODS PROCURED IN PORTS	4000	4400	400	10.0	48000	49200	1200	2.5
TOTAL GOODS EXPORTS	155707	128171	-27536	-17.7	1472889	1531441	58552	4.0

TRADITIONAL & NON-TRADITIONAL EXPORTS US\$000

	MAR 2004	MAR 2005	CHANGE	%CHANGE	APR-MAR 2003/2004	APR-MAR 2004/2005	CHANGE	%CHANGE
MAJOR TRAD. EXPORT	106188	91223	-14965	-14.1	931188	988743	57555	6.2
BAUXITE	9144	8567	-577	-6.3	92051	81282	-10769	-11.7
ALUMINA	67156	68371	1215	1.8	737413	812266	74853	10.2
SUGAR	28560	14285	-14275	-50.0	82957	87023	4066	4.9
BANANAS	1328	0	-1328	-100.0	18767	8172	-10595	-56.5
OTHER TRAD. EXPORT	6743	5198	-1545	-22.9	65691	74114	8423	12.8
CITRUS	464	197	-267	-57.5	3012	1928	-1084	-36.0
COCOA	147	126	-21	-14.3	3004	2055	-949	-31.6
COFFEE	2748	1942	-806	-29.3	28791	36116	7325	25.4
PIMENTO	0	146	146	-	2806	1967	-839	-29.9
RUM	3199	2540	-659	-20.6	26961	30162	3201	11.9
GYPSUM	185	247	62	33.5	1117	1886	769	68.8
NON-TRAD. EXPORTS	28742	20177	-8565	-29.8	256593	273143	16550	6.4
RE-EXPORTS	5613	3529	-2084	-37.1	33281	31086	-2195	-6.6
GENERAL MERCHANDISE EXPS.	147286	120127	-27159	-18.4	1286753	1367086	80333	6.2
FREEZONE EXPORTS	4421	3644	-777	-17.6	138136	115155	-22981	-16.6
GOODS PROCURED IN PORTS	4000	4400	400	10.0	48000	49200	1200	2.5
TOTAL GOODS EXPORTS	155707	128171	-27536	-17.7	1472889	1531441	58552	4.0

VALUE OF GOODS IMPORTS BY S.I.T.C. US\$000

	MAR 2004	MAR 2005	CHANGE	%CHANGE	APR-MAR 2003/2004	APR-MAR 2004/2005	CHANGE	%CHANGE
0.FOOD	49803	46753	-3050	-6.1	494029	533837	39808	8.1
1.BEV. & TOBAC	4393	3725	-668	-15.2	35046	48028	12982	37.0
2.CRUDE MATS.	5846	7599	1753	30.0	53186	74369	21183	39.8
3.MIN.FUEL	89672	78665	-11007	-12.3	838318	900701	62383	7.4
4.ANI & VEG OIL	2905	3290	385	13.3	27718	33176	5458	19.7
5.CHEMICAL	34999	41848	6849	19.6	400941	406518	5577	1.4
6.MANUF. GOOD	39454	57724	18270	46.3	479664	611235	131571	27.4
7.MACH.& TRANSP	75611	66396	-9215	-12.2	860315	881515	21200	2.5
8.MISC.MAN.GOOD	35020	43087	8067	23.0	395732	433443	37711	9.5
9.MISC. COMMDS.	4581	5287	706	15.4	54641	69160	14519	26.6
GENERAL MERCHANDISE IMPORTS	342284	354374	12090	3.5	3639590	3991982	352392	9.7
FREEZONE IMPORTS	2279	1163	-1116	-49.0	91634	61018	-30616	-33.4
GOODS PROCURED IN PORTS	6400	7000	600	9.4	76800	78600	1800	2.3
TOTAL GOODS IMPORTS	350963	362537	11574	3.3	3808024	4131600	323576	8.5

MAJOR TRADITIONALS (VOLUME, VALUE, PRICE)

	MAR 2004	MAR 2005	CHANGE	%CHANGE	APR-MAR 2003/2004	APR-MAR 2004/2005	CHANGE	%CHANGE
BAUXITE								
Volume ('000 tonnes)	381.0	352.0	-29.0	-7.6	3875.2	3409.3	-465.9	-12.0
Value (U.S. \$000)	9144.0	8567.0	-577.0	-6.3	92051.0	81282.0	-10769.0	-11.7
Price (US \$/tonne)	24.0	24.3	0.3	1.4	23.8	23.8	0.1	0.4
ALUMINA								
Volume ('000 tonnes)	322.8	325.3	2.6	0.8	3919.8	3962.1	42.3	1.1
Value (U.S. \$000)	67156.0	68371.0	1215.0	1.8	737413.0	812266.0	74853.0	10.2
Price (US \$/tonne)	208.1	210.2	2.1	1.0	188.1	205.0	16.9	9.0
SUGAR								
Volume ('000 tonnes)	44.6	21.0	-23.6	-52.9	133.2	135.5	2.3	1.7
Value (U.S. \$000)	28560.0	14285.0	-14275.0	-50.0	82957.0	87023.0	4066.0	4.9
Price (US \$/tonne)	640.2	679.6	39.4	6.2	622.7	642.4	19.6	3.1
BANANAS								
Volume ('000 tonnes)	2.8	0.0	-2.8	-100.0	40.0	18.1	-21.9	-54.7
Value (U.S. \$000)	1328.0	0.0	-1328.0	-100.0	18767.0	8172.0	-10595.0	-56.5
Price (US \$/tonne)	478.4	0.0	-478.4	-100.0	469.4	450.8	-18.6	-4.0

1/REVISED

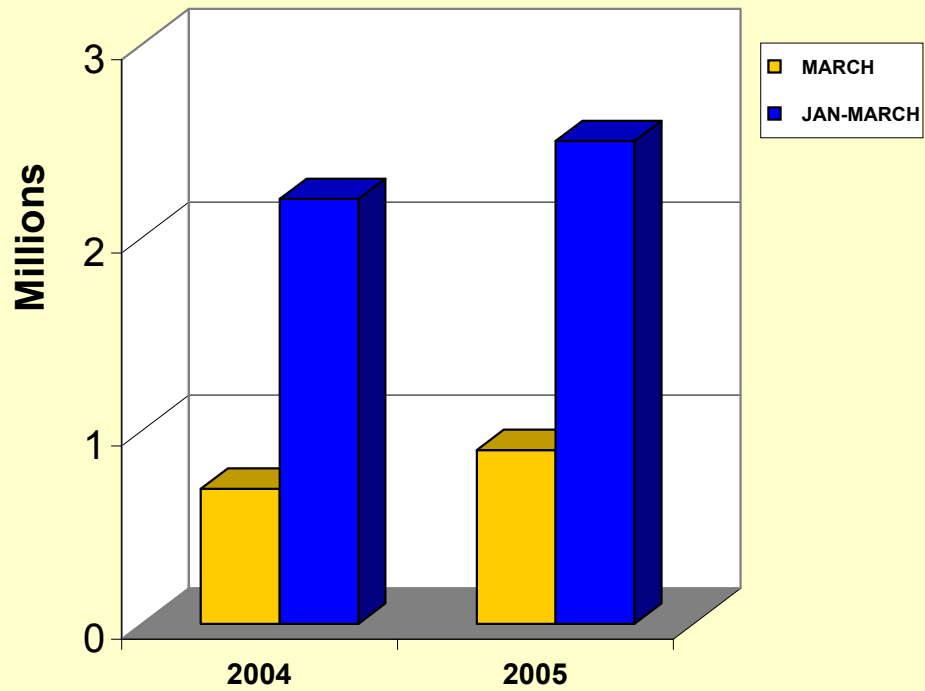
2/PROVISIONAL

External Sector Statistics Unit.

July 13, 2005

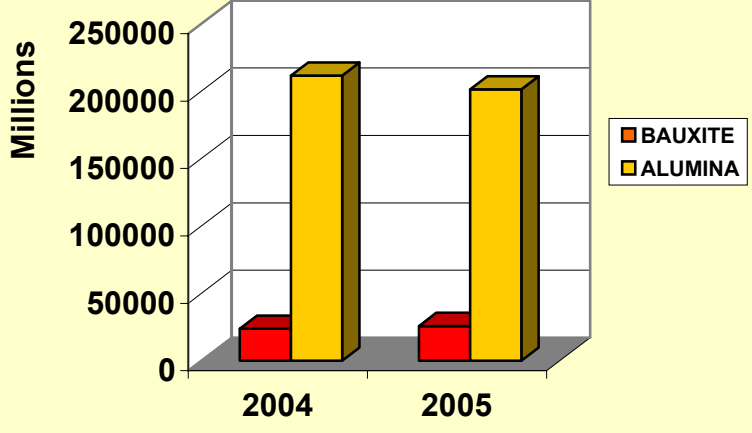
GARMENTS EXPORTS US\$Mn.				
	2004	2005	CHANGE	%CHANGE
JANUARY	0.6	0.8	0.2	33.3
FEBRUARY	0.9	0.8	-0.1	-11.1
MARCH	0.7	0.9	0.2	28.6
JAN-MARCH	2.2	2.5	0.3	13.6
	2003/2004	2004/2005	CHANGE	%CHANGE
APRIL	0.9	1.2	0.3	33.3
MAY	1.0	0.9	-0.1	-10.0
JUNE	1.0	1.0	0.0	0.0
APRIL-JUNE	2.9	3.1	0.2	6.9
JULY	1.3	0.9	-0.4	-30.8
AUGUST	0.7	0.8	0.1	14.3
SEPTEMBER	0.7	0.6	-0.1	-14.3
APRIL-SEPT	5.6	5.4	-0.2	-3.6
OCTOBER	1.1	0.9	-0.2	-18.2
NOVEMBER	0.8	1.0	0.2	25.0
DECEMBER	5.8	1.0	-4.8	-82.8
APRIL-DECEMBER	8.5	8.4	-0.1	-1.2
JANUARY	0.6	0.7	0.1	16.7
FEBRUARY	0.9	0.8	-0.1	-11.1
MARCH	0.7	0.9	0.2	28.6
APRIL-MARCH	10.7	10.8	0.1	0.9
SOURCE: STATISTICAL INSTITUTE OF JAMAICA EXTERNAL SECTOR STATISTICS July 13, 2005				

GARMENTS EXPORT US\$Mn
JAN - MARCH



BAUXITE						
	2004 Volumes (Tonnes)	2005 Volumes (Tonnes)	% Change	2004 Values (\$ 000')	2005 Values (\$ 000')	% Change
JANUARY	375063.0	393019.0	4.8	9001.0	9566.0	6.3
FEBRUARY	230889.0	313182.0	35.6	5541.0	7623.0	37.6
MARCH	380995.0	351972.0	-7.6	9144.0	8567.0	-6.3
JANUARY-MARCH	986947.0	1058173.0	7.2	23686.0	25756.0	8.7
ALUMINA						
	2004 Volumes (Tonnes)	2005 Volumes (Tonnes)	% Change	2004 Values (\$ 000')	2005 Values (\$ 000')	% Change
JANUARY	353037.0	358434.0	1.5	73456.0	75332.0	2.6
FEBRUARY	340880.0	273943.0	-19.6	70926.0	57575.0	-18.8
MARCH	322755.0	325312.0	0.8	67156.0	68371.0	1.8
JANUARY-MARCH	1016672.0	957689.0	-5.8	211538.0	201278.0	-4.9
External Sector Statistics July 13,2005						

**BAUXITE/ALUMINA US\$Mn
JAN-MARCH 2005**



EXPORTS OF SELECTED NON-TRADITIONAL DOMESTIC COMMODITIES US\$ 000

	2004	2005	%	2004	2005	%	2003/2004	2004/2005	%
	JAN-MAR	JAN-MAR		MAR	MAR		APR-MAR	APR-MAR	
COMMODITIES									

FOOD									

ACKEE	2006.0	2714.0	35.3	1115.0	1580.0	41.7	6304.0	7012.0	11.2
FISH	2034.0	1429.0	-29.7	914.0	634.0	-30.6	7520.0	6915.0	-8.0
BREADFRUIT	160.0	150.0	-6.3	80.0	65.0	-18.8	956.0	946.0	-1.0
CUCUMBERS	3.0	3.0	0.0	1.0	1.0	0.0	12.0	12.0	0.0
PUMPKINS	136.0	105.0	-22.8	41.0	29.0	-29.3	401.0	370.0	-7.7
OTHER VEGETABLES	17.0	30.0	76.5	3.0	13.0	333.3	256.0	269.0	5.1
DASHEEN	328.0	227.0	-30.8	115.0	76.0	-33.9	1006.0	905.0	-10.0
CASSAVA	0.0	0.0	0.0	0.0	0.0	0.0	0.0	0.0	0.0
SWEET POTATOES	309.0	493.0	59.5	111.0	192.0	73.0	1524.0	1708.0	12.1
YAMS	3923.0	3363.0	-14.3	1295.0	1342.0	3.6	15271.0	14711.0	-3.7
AVOCADOES	0.0	0.0	0.0	0.0	0.0	0.0	310.0	310.0	0.0
MANGOES	142.0	148.0	4.2	55.0	92.0	67.3	852.0	858.0	0.7
OTHER ROOTS	113.0	122.0	8.0	36.0	39.0	8.3	424.0	433.0	2.1
PAPAYAS	613.0	416.0	-32.1	281.0	198.0	-29.5	1995.0	1798.0	-9.9
MELON	0.0	0.0	0.0	0.0	0.0	0.0	0.0	0.0	0.0
Total	9784.0	9200.0	-6.0	4047.0	4261.0	5.3	36831.0	36247.0	-1.6
CRUDE MATERIALS									

Cut Flowers	16.0	9.0	-43.8	6.0	2.0	-66.7	42.0	35.0	-16.7
Live Plts.&Foliage	7.0	12.0	71.4	4.0	10.0	150.0	11.0	10.0	-9.1
Total	28.0	26.0	-7.1	11.0	14.0	27.3	66.0	53.0	-19.7

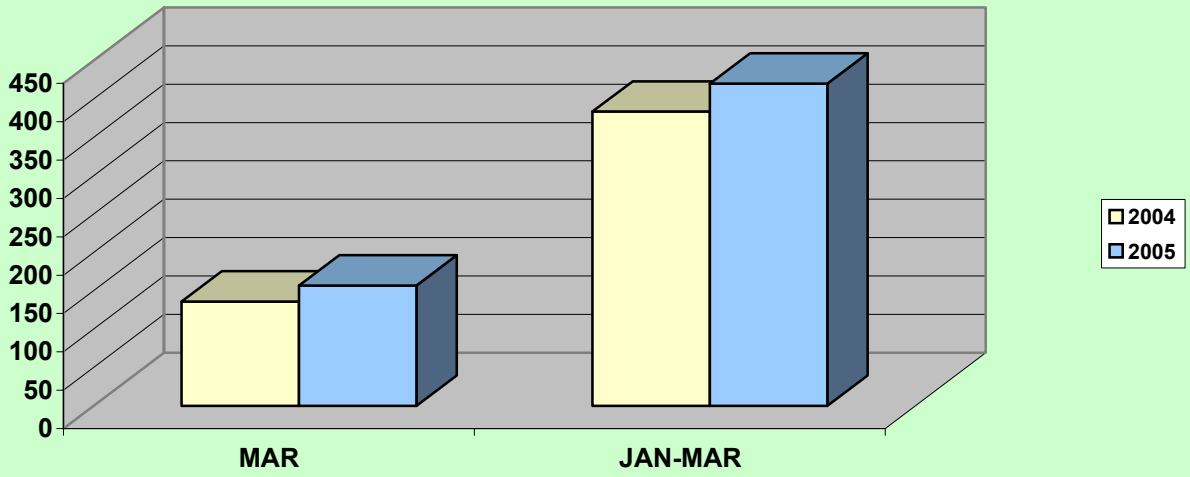
July 13, 2005

TOURISM STATISTICS

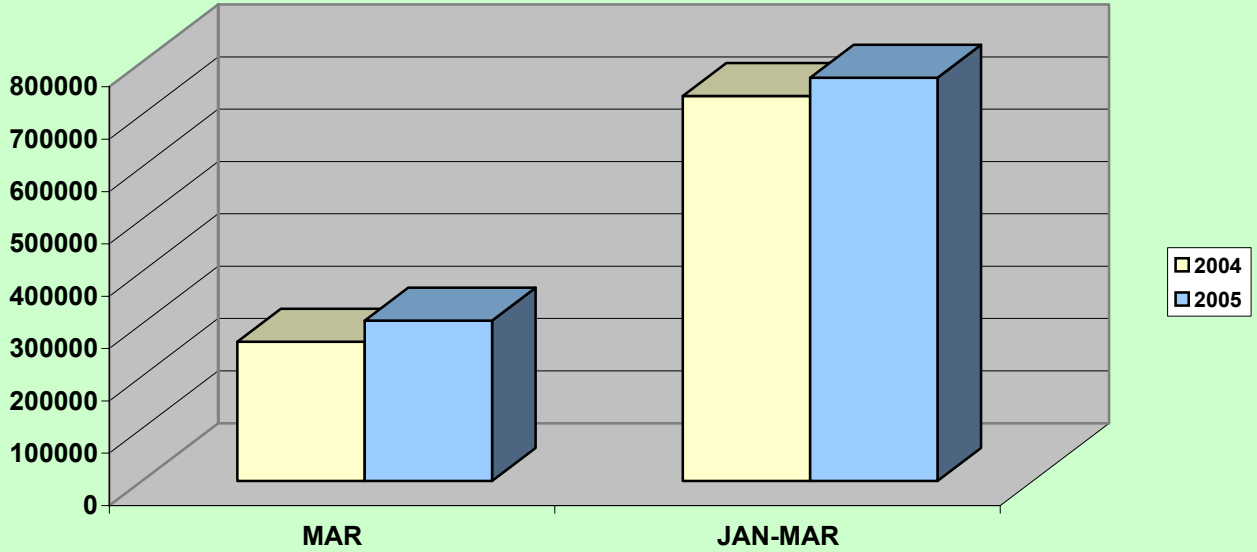
	2004 MAR	2005 MAR	% CHNG	2004 JAN-MAR	2005 JAN-MAR	% CHNG
TOTAL STOP-OVERS	136606	155103	13.5	366085	394969	7.9
FOREIGN NAT. STOP-OVERS(# of)	130636	147180	12.7	350244	377041	7.7
Long Stay	123450	143020	15.9	329948	364120	10.4
Short Stay	7186	4160	-42.1	20296	12921	-36.3
NON-RES. JAMAICANS	5970	7923	32.7	15841	17928	13.2
CRUISE PASSENGERS	129266	150871	16.7	369267	374973	1.5
TOTAL TOURISTS	265872	305974	15.1	735352	769942	4.7
ARMED FORCES	0	0	-	0	0	-
TOTAL VISITORS	265872	305974	15.1	735352	769942	4.7
AVG.LENGTH.OF STAY	8.6	8.5	-1.2	9.1	9.0	-0.7
ESTM.EXPD.(US\$MN)	135.9	156.8	15.4	383.6	419.9	9.5
Avg. Est.Exp/per person/per day (US\$)						
Stop-Overs	109.8	112.2	2.2	109.8	112.2	2.2
A.forces/Cruise	75.2	84.0	11.7	75.2	84.0	11.7

*External Sector Statistics Unit
Economic Information & Publications Dept.
July 13, 2005*

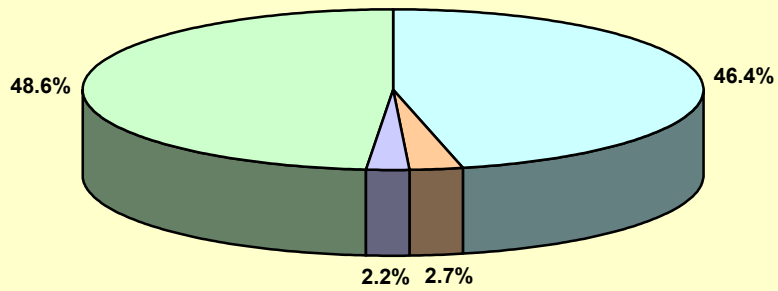
Estimated Tourist Expenditure (US\$m)



Jamaica: Total Visitors

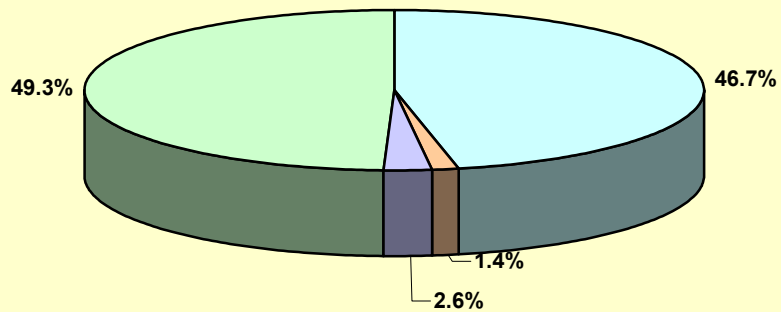


Composition of Visitors March 2004



For. Nat. Long Stay For. Nat. Short Stay Non-Res. Jamaicans Cruise Passengers

Composition of Visitors March 2005

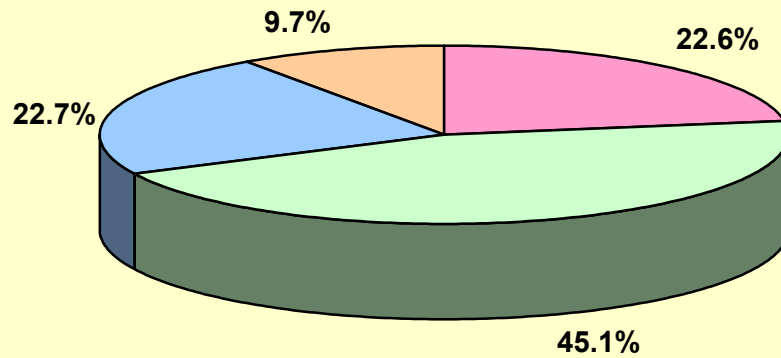


For. Nat. Long Stay For. Nat. Short Stay Non-Res. Jamaicans Cruise Passengers

TOURISM STATISTICS				
	2003/2004	2004/2005		%
	APR-MAR	APR-MAR	CHNG	CHNG
TOTAL STOP-OVERS	1374120	1443670	69550	5.1
FOREIGN NAT. STOP-OVERS	1285894	1353715	67821	5.3
Long Stay	1209729	1288089	78360	6.5
Short Stay	76165	65626	-10539	-13.8
NON-RES. JAMAICANS	88226	89955	1729	2.0
CRUISE PASSENGERS	1137820	1105479	-32341	-2.8
TOTAL TOURISTS	2511940	2549149	37209	1.5
ARMED FORCES	745	0	-745	-100.0
TOTAL VISITORS	2512685	2549149	36464	1.5
AVG.LENGTH.OF STAY	10.1	10.0	-0.2	-1.7
ESTM.EXPD.(US\$MN)	1400.9	1474.3	73.5	5.2
Avg. Est.Exp/per person/per day (US\$)				
Stop-Overs	97.4	98.1	0.7	0.7
A.forces/Cruise	79.1	86.5	7.4	9.4
<i>External Sector Statistics Unit</i>				
<i>Economic Information & Publications Dept.</i>				

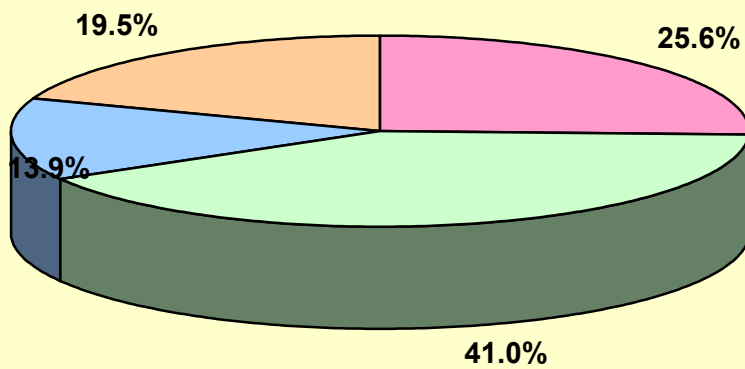
SOURCES OF PRIVATE TRANSFERS								
(US\$Mn)								
	2004	2005			2004	2005		
	MAR	MAR	CHNG	%CHNG	JAN - MAR	JAN - MAR	CHNG	%CHNG
TOTAL INFLOWS	139.75	184.11	44.36	31.74	394.99	506.35	111.35	28.19
COMMERCIAL BANKS	31.60	47.12	15.52	49.12	96.64	123.80	27.16	28.11
REMITTANCE COMPS.	63.00	75.43	12.44	19.74	174.94	201.15	26.21	14.98
POST OFFICE	0.10	0.11	0.01	5.00	0.30	0.32	0.02	5.00
BUILDING SOCIETIES	31.66	25.68	-5.98	-18.88	82.92	73.76	-9.15	-11.04
OTHER	13.40	35.77	22.37	166.96	40.20	107.32	67.12	166.96
SOURCES OF PRIVATE TRANSFERS								
(US\$Mn)								
	2003/2004		2004/2005					
	APR - FEB		APR - FEB		CHNG		%CHNG	
TOTAL INFLOWS	1471.95		1659.02		187.07		12.71	
COMMERCIAL BANKS	330.74		387.50		56.76		17.16	
REMITTANCE COMPS.	697.80		789.64		91.84		13.16	
POST OFFICE	1.20		1.22		0.02		1.67	
BUILDING SOCIETIES	298.21		330.68		32.47		10.89	
OTHER	144.00		149.98		5.98		4.15	

Sources of Private Transfers (US\$m)
March 2004



Commercial Banks Remittance Companies Building Societies Other

Sources of Private Transfers (US\$m)
March 2005



Commercial Banks Remittance Companies Building Societies Other

Balance of Payments of Jamaica

US\$Mn.

	Mar 2004	Mar 2005	Change
1. Current Account	0.5	19.4	18.9
A. Goods Balance	-149.6	-196.9	-47.3
Exports	157.6	129.6	-28.0
Imports	307.2	326.5	19.3
B. Services Balance	73.5	93.5	20.0
Transportation	-4.8	-4.3	0.5
Travel	117.1	140.1	23.0
Other Services	-38.8	-42.3	-3.5
C. Income	-40.9	-24.2	16.7
Compensation of employees	1.3	3.6	2.3
Investment Income	-42.2	-27.8	14.4
D. Current Transfers	117.5	147.0	29.5
Official	9.4	15.6	6.2
Private	108.1	131.4	23.3
2. Capital & Financial Account	-0.5	-19.4	-18.9
A. Capital Account	-1.0	-1.2	-0.2
Capital Transfers	-1.0	-1.2	-0.2
Official	0.0	0.0	0.0
Private	-1.0	-1.2	-0.2
Acq/dis. of non-produced non-fin. assets	0.0	0.0	0.0
B. Financial Account	0.5	-18.2	-18.7
Other Official Investment	33.5	-25.6	-59.1
Other Private Investment(incl. Errors & omissions)	61.7	77.9	16.2
Reserves	-94.7	-70.5	
Govt. Reserves			

External Sector Statistics Unit

Economic Information & Publications Dept.

July 13, 2005

Balance of Payments of Jamaica
US\$Mn.

	Mar 2004	Mar 2005	Change
Services (Net)	73.5	93.5	20.0
Inflows	216.0	244.5	28.5
Outflows	142.5	151.0	8.5
Transportation	-4.8	-4.3	0.5
Inflows	52.6	60.1	7.5
Outflows	57.4	64.4	7.0
Travel	117.1	140.1	23.0
Inflows	135.9	156.8	20.9
Outflows	18.8	16.7	-2.1
Other Services	-38.8	-42.3	-3.5
Inflows	27.5	27.6	0.1
Outflows	66.3	69.9	3.6
Income (Net)	-40.9	-24.2	16.7
Compensation of Employees	1.3	3.6	2.3
Inflows	5.3	8.3	3.0
Outflows	4.0	4.7	0.7
Investment Income	-42.2	-27.8	14.4
Inflows	10.7	11.8	1.1
Outflows	52.9	39.6	-13.3
- Bank of Jamaica	0.17	0.13	-0.04
- Government Direct	10.3	12.5	2.3
- Government Guaranteed	0.3	0.3	0.0
- Private	0.0	1.6	1.6
- Direct Investment	30.7	13.6	-17.0
- Other	11.5	11.5	0.0
Current Transfers (Net)	117.5	147.0	29.5
Inflows	149.5	200.3	50.8
Outflows	32.0	53.3	21.3
Official	9.4	15.6	6.2
Inflows	9.7	16.2	6.5
Outflows	0.3	0.6	0.3
Private	108.1	131.4	23.3
Inflows	139.8	184.1	44.3
Outflows	31.7	52.7	21.0

	Balance of Payments of Jamaica		
	US\$Mn.		
	Mar 2005	Mar 2005	Change
Capital & Financial Account (Net)	-0.5	-19.4	-18.9
Capital Account (Net)	-1.0	-1.2	-0.2
1. Capital Transfers	-1.0	-1.2	-0.2
Official	0.0	0.0	0.0
Inflows	0.0	0.0	0.0
Outflows	0.0	0.0	0.0
Private	-1.0	-1.2	-0.2
Inflows	1.8	1.6	-0.2
Outflows	2.8	2.8	0.0
2. Acq/disp. of non-produced non-fin. assets	0.0	0.0	0.0
Inflows	0.0	0.0	0.0
Outflows	0.0	0.0	0.0
Financial Account (Net)	0.5	-18.2	-18.7
Other Official Investments	33.5	-25.6	-59.1
Inflows	53.7	2.1	-51.6
Outflows	20.2	27.7	7.5
Other Private Investments (incl.errors & omissions)	61.7	77.9	16.2
Inflows	257.2	255.3	-1.9
Outflows	195.5	177.4	-18.1
Reserves	-94.7	-70.5	
Govt. Reserves			

	Balance of Payments of Jamaica		
	Apr-Mar 2003/04	US\$Mn. Apr-Mar 2004/05	Change
1. Current Account	-547.3	-574.5	-27.2
A. Goods Balance	-1817.9	-2073.3	-255.4
Exports	1481.4	1552.9	71.5
Imports	3299.3	3626.2	326.9
B. Services Balance	594.7	580.3	-14.4
Transportation	-130.6	-161.8	-31.2
Travel	1144.6	1195.6	51.0
Other Services	-419.3	-453.5	-34.2
C. Income	-563.4	-588.1	-24.7
Compensation of employees	71.9	86.4	14.5
Investment Income	-635.3	-674.5	-39.2
D. Current Transfers	1239.4	1506.6	267.2
Official	106.3	170.8	64.5
Private	1133.1	1335.8	202.7
2. Capital & Financial Account	547.3	574.5	27.2
A. Capital Account	-2.9	-10.8	-7.9
Capital Transfers	-3.3	-10.8	-7.5
Official	0.1	0.1	0.0
Private	-3.4	-10.9	-7.5
Acq/dis. of non-produced non-fin. assets	0.4	0.0	-0.4
B. Financial Account	550.2	585.3	35.1
Other Official Investment	142.5	179.1	36.6
Other Private Investment(incl. Errors & omissions)	636.5	739.2	102.7
Reserves	-228.9	-333.0	
Govt. Reserves			

*External Sector Statistics Unit
Economic Information & Publications Dept.
July 13, 2005*

	Balance of Payments of Jamaica		
	US\$Mn.		
	Apr-Mar 2003/04	Apr-Mar 2004/05	Change
Services (Net)	594.7	580.3	-14.4
Inflows	2188.0	2312.1	124.1
Outflows	1593.3	1731.8	138.5
Transportation	-130.6	-161.8	-31.2
Inflows	482.3	503.0	20.7
Outflows	612.9	664.8	51.9
Travel	1144.6	1195.6	51.0
Inflows	1400.9	1474.3	73.4
Outflows	256.3	278.7	22.5
Other Services	-419.3	-453.5	-34.2
Inflows	304.9	334.8	29.9
Outflows	724.2	788.3	64.1
Income (Net)	-563.4	-588.1	-24.7
Compensation of Employees	71.9	86.4	14.5
Inflows	113.3	140.6	27.3
Outflows	41.4	54.2	12.8
Investment Income	-635.3	-674.5	-39.2
Inflows	110.5	137.9	27.4
Outflows	745.8	812.4	66.6
- Bank of Jamaica	0.9	0.4	-0.5
- Government Direct	288.7	327.9	39.2
- Government Guaranteed	2.1	1.8	-0.4
- Private	19.2	4.8	-14.4
- Direct Investment	338.3	339.6	1.3
- Other	96.6	137.8	41.2
Current Transfers (Net)	1239.4	1506.6	267.2
Inflows	1587.0	2015.2	428.2
Outflows	347.6	508.6	161.0
Official	106.3	170.8	64.5
Inflows	110.8	175.3	64.5
Outflows	4.5	4.5	0.0
Private	1133.1	1335.8	202.7
Inflows	1476.2	1839.9	363.7
Outflows	343.1	504.1	161.0

	Balance of Payments of Jamaica		
	US\$Mn.		
	Apr-Mar 2003/04	Apr-Mar 2004/05	Change
Capital & Financial Account (Net)	547.3	574.5	27.2
Capital Account (Net)	-2.9	-10.8	-7.9
1. Capital Transfers	-3.3	-10.8	-7.5
Official	0.1	0.1	0.0
Inflows	0.1	0.1	0.0
Outflows	0.0	0.0	0.0
Private	-3.4	-10.9	-7.5
Inflows	19.5	22.7	3.2
Outflows	22.9	33.6	10.7
2. Acq/disp. of non-produced non-fin. assets	0.4	0.0	-0.4
Inflows	0.4	0.0	-0.4
Outflows	0.0	0.0	0.0
Financial Account (Net)	550.2	585.3	35.1
Other Official Investments	142.5	179.1	36.6
Inflows	412.9	902.0	489.1
Outflows	270.3	722.9	452.6
Other Private Investments (incl.errors & omissions)	636.5	739.2	102.7
Inflows	2769.0	2960.1	191.1
Outflows	2132.5	2220.9	88.4
Reserves	-228.9	-333.0	
Govt. Reserves			

